

WORKING PAPER

FLIGHTS TO SAFETY

Lieven Baele
Geert Bekaert
Koen Inghelbrecht
Min Wei

March 2019
2019/968

Flights to Safety*

Lieven Baele¹

Geert Bekaert²

Koen Inghelbrecht³

Min Wei⁴

January 11, 2019

Abstract

We identify flight-to-safety (FTS) days for 23 countries using only stock and bond returns and a model averaging approach. FTS days comprise less than 2% of the sample, and are associated with a 2.7% average bond-equity return differential and significant flows out of equity funds and into government bond and money market funds. FTS represents flights to both quality and liquidity in international equity markets, but mainly a flight-to-quality in the US corporate bond market. Emerging markets, endowment funds, and hedge funds all perform poorly during FTS, while hedge funds appear to vary their systematic exposures prior to a FTS.

JEL Classification: G11, G12, G14, E43, E44

Keywords: Flight-to-Safety, Flight-to-Quality, Stock-Bond Return Correlation, Liquidity, Hedge Funds

* The authors greatly benefited from discussions with seminar participants at Antwerp University, the National Bank of Belgium, the University of the Basque Country, Tilburg University, the Spring 2014 Inquire Europe-UK conference in Vienna, the 2014 Bank of Canada/Banco de España Workshop on “International Financial Markets,” and the 2015 American Finance Association in Boston, and in particular with Hans Dewachter, Frank de Jong, Joost Driessen, Eric Ghysels, Campbell Harvey, Philippe Mueller, Laurens Swinkels, Allan Timmermann, and Mathijs van Dijk. We are particularly grateful to Frank de Jong for sharing his corporate bond market dataset with us and Zilong Niu for his excellent research assistance with the construction of the quality/liquidity sorted equity portfolios. Baele, Bekaert, and Inghelbrecht gratefully acknowledge financial support from the National Bank of Belgium and Inquire Europe. Bekaert acknowledges financial support from Netspar. The opinions expressed are those of the authors and do not necessarily reflect views of the National Bank of Belgium or the Federal Reserve System.

¹ Finance Department, CentER, Tilburg University. E-mail: Lieven.Baele@uvt.nl

² Graduate School of Business, Columbia University, and NBER. E-mail: gb241@columbia.edu

³ Department Financial Economics, Ghent University. E-mail: Koen.Inghelbrecht@UGent.be

⁴ Federal Reserve Board of Governors, Division of Monetary Affairs, Washington DC. Email: min.wei@frb.gov

1 Introduction

In periods of market stress, the financial press often refers to extreme and inverse movements in bond and equity markets as flights-to-safety or flights-to-quality¹.

There is an active theoretical literature studying such phenomena. Traditional representative-agent consumption based asset pricing models (Barsky (1989) and Bekaert et al. (2009), for example), define a flight-to-safety as the joint occurrence of higher economic uncertainty (viewed as exogenous) with lower equity prices (through the cash flow and/or risk premium channel) and low real rates (through the precautionary savings channel). More recent papers examine how market dynamics might cause or exacerbate such a phenomenon. In Vayanos (2004), investors behave like fund managers and their fear of redemptions during high volatility periods cause them to reduce holdings of less liquid assets, resulting in a flight-to-liquidity. The same fear also raises investors' effective risk aversion, leading to a flight-to-safety that pushes up risk premiums and drives down the prices of risky assets (a flight-to-quality). In Caballero and Krishnamurthy (2008), Knightian uncertainty leads agents to shed risky assets in favor of safer claims when aggregate liquidity is low, thereby provoking a flight-to-quality and safety. Brunnermeier and Pedersen (2009) study a model in which speculators, who provide market liquidity, face margin requirements that increase in asset price volatility. They show that following a bad shock, the margin requirements can cause not only a liquidity spiral, with liquidity deteriorating across markets, but also a flight-to-quality, with a sharper drop in liquidity provision for the higher margin, more volatile assets.

To test such a diverse set of theoretical models, an empirical characterization of flight-to-safety episodes is essential. For that purpose, this paper defines, detects, and characterizes flight-to-safety episodes for 23 countries, using daily data on only two types of assets: the prototypical risky asset (a well-diversified equity index) and the prototypical safe and liquid asset (the benchmark Treasury security). We define a flight-to-safety, referred to as FTS henceforth, as an episode that satisfies three criteria: 1) a large, positive bond return accompanied by a large, negative equity return, 2) negative high-frequency correlations between bond and stock returns, and 3) elevated market stress, as demonstrated by a high equity market volatility. To identify FTS, we employ a bivariate regime-switching (RS) model for bond and equity returns that allows FTS events of varying degrees

¹In particular, between August 2004 and June 2015, a period marred by a global financial crisis, the Financial Times alone referred 538 times to Flight(s)-to-Quality and 464 times to Flight(s)-to-Safety.

of persistence. Economic restrictions on risk premia in different regimes aid in the identification. The specification and parameter estimates of this model are discussed in Section 2. A key finding is that relative risk premiums increase substantially during FTS events. We also formulate two alternative models, a “threshold model” inspired by the concept of exceedance correlation in Bae et al. (2003), and an “ordinal index model”, similar to the model used by Hollo et al. (2012) to measure financial instability. Applying model averaging techniques to these three models provides our preferred, robust estimates of the FTS events. The two alternative models, the construction of the preferred FTS measure, and the empirical results are discussed in Section 3.

Section 4 examines the identified FTS episodes across all 23 countries. Section 4.1 shows that FTS episodes comprise less than 2% of the sample, and are predominantly short-lived, with about 94% of the FTS episodes lasting 3 days or less. During those episodes, bond returns exceed equity returns by about 2.72% on average. Section 4.2 shows that FTS episodes are also associated with decreases in consumer sentiment, increases in implied volatilities for major stock indices, and appreciations of the so-called “safe-haven” currencies – the Japanese Yen and the Swiss Franc. Although asset prices could change without large portfolio re-allocations or trading volumes, Section 4.3 documents that, at least in the US, FTS events are accompanied by significant flows out of equity funds and into government bond and money market funds. Section 4.4 addresses the question whether the FTS is best characterized as a flight-to-quality or a flight-to-liquidity. Safety and quality are mostly used interchangeably in this context, referring to a preference for less risky assets, but as the theories we discussed earlier illustrate, in times of stress investors may also demand liquidity and the benchmark safe assets tend to be highly liquid as well. To differentiate the two, we examine returns to corporate bonds (for the US) and equities (for all other markets), double sorted on measures of quality and liquidity, during FTS episodes. While we find a strong flight-to-quality effect in both the corporate bond and equity markets, we find evidence for a flight-to-liquidity effect only in the equity market.

Section 5 considers the global nature of FTS events, using data from a larger set of emerging markets. We find that emerging equity and bond markets are both exposed to global FTS events beyond their usual exposures to a benchmark global portfolio. In addition, the FTS exposure of emerging equity markets appear to be lower for more integrated markets.

Section 6 investigates whether some popular investment strategies can “hedge” against FTS events. First, we consider the benefits of diversification into different geographic areas, alternative

asset classes, or alternative investment vehicles, strategies reportedly followed by major US endowments such as Yale and Harvard. We find that proxies of asset allocations used by the average endowment as well as that of Harvard and Yale still exhibit negative exposures to FTS events. In addition, we find that nearly all hedge fund styles demonstrate negative FTS betas. Inspired by Patton and Ramadorai (2013)’s analysis of changing market exposure of hedge funds, we show that the systematic exposures of hedge fund returns slowly increase until about 60 days before a FTS event and then steeply decrease until shortly before the event.

A number of previous empirical studies touch on one or more aspects of the FTS phenomenon, though none as systematically as the current paper. Baele et al. (2010) show that stock-bond illiquidity factors (potentially capturing “flights-to-liquidity”) and the VIX (potentially capturing “flights-to-safety”) help capture episodes of negative stock-bond return correlations. Connolly et al. (2005) and Bansal et al. (2010) show that periods of higher stock market volatility are associated with lower correlations between stock and bond returns and with higher bond returns. Goyenko and Sarkissian (2012) show that higher illiquidity of non-benchmark US Treasury bills, possibly associated with a flight-to-liquidity and/or quality, reduces future stock returns around the globe. Beber et al. (2014) identify “risk-off” episodes based on correlations between foreign exchange returns, while Baur and Lucey (2009) define a flight-to-quality as a period of declining correlation between stock and bond returns amid a falling stock market and differentiate such episodes from contagion. In addition, the recent financial crisis sparked a literature on indicators of financial instability and systemic risk, which are related to our FTS indicator. The majority of those articles use data from the financial sector only (see e.g. Acharya et al. (2017); Adrian and Brunnermeier (2016); Allen et al. (2012); Brownlees and Engle (2011)), whereas Hollo et al. (2012) and Aikman et al. (2017) use a wider set of stress indicators.

2 A Dynamic Model of Bond and Stock Returns with FTS

Recall that we identified three “symptoms” of a FTS: 1) a large, positive bond return accompanied by a large, negative equity return, 2) negative high-frequency correlations between bond and stock returns, and 3) elevated market stress, represented by a high equity market volatility. To avoid relying on arbitrary parameter choices determining what constitutes “stress” and how negative the

stock-bond correlations ought to be, we specify a RS model that embeds these three symptoms but allows the data to speak to the exact magnitude of stress and return differentials between bonds and equities on FTS days and of the difference in stock-bond correlations between FTS and non-FTS days. The model is flexibly parameterized so that it can accommodate FTS episodes of any duration, including very short-lived ones. Moreover, the model yields estimates of expected returns in different regimes, which we exploit to impose economic restrictions that aid the identification. Section 2.1 discusses the model in detail; Section 2.2 reports the estimation results.

2.1 The Model

2.1.1 General Model Structure

The model features three regimes: an equity regime denoted by S_t^e ; a bond regime denoted by S_t^b ; and a FTS regime denoted by S_t^{FTS} . Each regime variable takes the value 0 or 1. For the bond and equity regimes, which are assumed to be independent, values of 1 correspond to high volatility regimes. For the FTS regime, a value of 1 indicates we are on a FTS day, and identifying this regime is the main goal of the paper. We assume that these variables are not observed by the econometrician and must be inferred from the data. As in the Hamilton (1989) tradition, the bond and equity regime variables follow Markov chains with constant transition probabilities:

$$P^e = \text{Prob}[S_t^e = 0 | S_{t-1}^e = 0], \quad Q^e = \text{Prob}[S_t^e = 1 | S_{t-1}^e = 1] \quad (1)$$

$$P^b = \text{Prob}[S_t^b = 0 | S_{t-1}^b = 0], \quad Q^b = \text{Prob}[S_t^b = 1 | S_{t-1}^b = 1]. \quad (2)$$

FTS events are assumed to only occur in periods of equity market stress; we therefore impose $\text{Prob}[S_t^{FTS} = 1 | S_t^e = 0] = 0$. Conditional on being in the high equity regime, the switching and staying probabilities for the FTS regime are denoted by:

$$\text{Prob}[S_t^{FTS} = 1 | S_t^e = 1, S_{t-1}^{FTS} = 0] = A \quad \text{Prob}[S_t^{FTS} = 1 | S_t^e = 1, S_{t-1}^{FTS} = 1] = B. \quad (3)$$

The parameters A and B play a critical role in determining the persistence of FTS events.

We consider the following model for equity ($r_{e,t}$) and bond ($r_{b,t}$) returns:

$$r_{e,t} = \alpha_0 + \alpha_1 J_{e,t}^{lh} + \alpha_2 J_{e,t}^{hl} + \alpha_{FTS} \left(J_t^{FTS} + v_e S_t^{FTS} \right) + \alpha_{FTR} J_t^{FTR} + h_{e,t} \varepsilon_{e,t} \quad (4)$$

$$r_{b,t} = \gamma_0 + \gamma_1 J_{b,t}^{lh} + \gamma_2 J_{b,t}^{hl} + \gamma_{FTS} \left(J_t^{FTS} + v_b S_t^{FTS} \right) + \gamma_{FTR} J_t^{FTR} + h_{b,t} \varepsilon_{b,t}. \quad (5)$$

The model features several ‘‘jump’’ terms, indicated by the letter J , that play critical roles in

determining the relative values of expected returns in the various regimes, as discussed below in Section 2.1.2. The normalized shocks $\varepsilon_{e,t}$ and $\varepsilon_{b,t}$ are assumed to be distributed $N(0, 1)$ and can be correlated. The volatilities of the shocks are indicated by $h_{e,t}$ and $h_{b,t}$ and are time-varying. More details on the volatilities and the correlation are provided in Section 2.1.3.

2.1.2 Expected Returns

In this model, time variations in expected returns arise because of the various “jump terms” and the FTS regime, which we discuss in turn. The non-FTS-related jump term, $J_{i,t}^{jk}$, takes the value 1 when the equity ($i = e$) or bond ($i = b$) market switches from a high to a low volatility regime ($j = l, k = h$) or from a low to a high volatility regime ($j = h, k = l$), and is zero otherwise. The jump terms are designed to capture the large negative (positive) returns observed when the regime unexpectedly switches from low (high) to high (low) volatilities. Therefore, following Mayfield (2004), we impose $\alpha_1, \gamma_1 < 0$ and $\alpha_2, \gamma_2 > 0$. These sign restrictions imply that, for either market and for a given FTS regime, returns are expected to be higher in the high than in the low volatility regime, because investors perceive a positive probability of switching to the other regime.²

The FTS-related terms, J_t^{FTS} and S_t^{FTS} , capture the notion that equity (bond) returns are negative (positive) during FTS episodes, with the effect being particularly pronounced on the first day of the episode. Here, J_t^{FTS} is a jump term that equals 1 on the first day of a FTS-regime and zero otherwise. We impose that $v_e, v_b > 0$, $\alpha_{FTS} < 0$ (stock markets fall during FTS episodes), and $\gamma_{FTS} > 0$ (bond prices increase during FTS). On the first day, the negative (positive) FTS effect on equity (bond) returns is at its maximum at $(1 + v_e) \alpha_{FTS}$ ($(1 + v_b) \gamma_{FTS}$), while on subsequent FTS days the magnitude of the effect is allowed to decline to $v_e \alpha_{FTS}$ ($v_b \gamma_{FTS}$). Finally, the jump term J_t^{FTR} is equal to 1 on the day when the FTS regime is switched off, representing a “Flight-to-Risk” (FTR). We impose that $\alpha_{FTR} > 0$ and $\gamma_{FTR} < 0$, so that equity (bond) returns react positively (negatively) to the end of a FTS regime.

Because by assumption a FTS regime cannot coincide with a low equity volatility regime, there are three possible combinations of the equity regime S_t^e and the FTS regime S_t^{FTS} , with the following expected returns:

²Estimation of standard RS models (see Ang and Bekaert (2002), for example), in which the drift term is simply a function of the contemporaneous regime, often generates a counter-intuitive pattern of a negative (positive) expected return in the high (low) volatility regime, partly because these jump terms are not accounted for.

$$\begin{aligned}
ER_e^{0,0} &= E[r_{e,t+1}|S_t^e = 0, S_t^{FTS} = 0; I_t] &= \alpha_0 + \alpha_1(1 - P^e) + \alpha_{FTS}(1 + v_e)(1 - P^e)A \\
ER_e^{1,0} &= E[r_{e,t+1}|S_t^e = 1, S_t^{FTS} = 0; I_t] &= \alpha_0 + \alpha_2(1 - Q^e) + \alpha_{FTS}(1 + v_e)Q^eA \\
ER_e^{1,1} &= E[r_{e,t+1}|S_t^e = 1, S_t^{FTS} = 1; I_t] &= \alpha_0 + \alpha_2(1 - Q^e) + Q^eB\alpha_{FTS}v_e \\
& &+ [(1 - Q^e) + Q^e(1 - B)]\alpha_{FTR}
\end{aligned} \tag{6}$$

where I_t represents the information set at time t . When the economy is in the low-equity-volatility, non-FTS regime, the expected equity return is pulled below the constant term α_0 , because the prospect of switching into the high-equity-volatility and/or FTS regimes bring with it the possibility of negative return jumps (α_1 and $\alpha_{FTS} < 0$). When the economy is in the high-equity-volatility, non-FTS regime, there is a tension between the possibility of moving back to a low-equity-volatility regime, inducing a positive jump in returns ($\alpha_2(1 - Q^e)$), and the possibility of moving to a FTS regime, inducing a negative jump in returns ($\alpha_{FTS}(1 + v_e)Q^eA$). Finally, when the economy is already in the FTS, and hence high equity volatility regime, there is a chance of moving back to the low-equity-volatility state and thus also out of the FTS regime, triggering a positive Flight-to-Risk jump in returns³ as well as a chance of staying within the FTS regime, inducing further negative returns through $Q^eB\alpha_{FTS}v_e$.

To help identifying the regimes, we impose the additional restriction that expected equity returns are the highest in the FTS regime, followed by the non-FTS, high-equity-volatility regime, with the low-equity-volatility regime featuring the lowest, yet still positive, expected return, i.e. $ER_e^{1,1} > ER_e^{1,0} > ER_e^{0,0} > 0$. The restriction $ER_e^{1,0} > ER_e^{0,0}$ requires:

$$\alpha_2 > \frac{\alpha_1(1 - P^e) - \alpha_{FTS}(1 + v_e)A[Q^e + P^e - 1]}{(1 - Q^e)} \tag{7}$$

while the restriction $ER_e^{1,1} > ER_e^{1,0}$ requires:

$$v_eQ^e\alpha_{FTS}(A - B) \leq [(1 - Q^e) + Q^e(1 - B)]\alpha_{FTR} - Q^eA\alpha_{FTS}. \tag{8}$$

Given that $\alpha_{FTR} > 0$ and $\alpha_{FTS} < 0$, the right hand side of Equation (8) is guaranteed to be positive. There are therefore two cases. If $B > A$, the condition is automatically satisfied and the estimation must simply ensure $v_e \geq 0$. If $A > B$, however, v_e is constrained from above by the expression implicit in (8). Finally, we impose that all expected equity returns are positive by imposing a restriction on α_0 such that $ER_e^{0,0} \geq 0$ (see Equation (6)).

³The flight-to-risk term applies whether the equity regime stays in the high volatility state (with probability $Q^e(1 - B)$) or not (probability $1 - Q^e$).

Analogously, for bond returns, we impose the restriction that expected bond returns must be lower in the FTS regimes, regardless of the bond volatility regime. We do, however, not rule out negative bond returns. We refer to the online appendix for more details.

2.1.3 Volatility and Correlation Dynamics

The volatilities of the stock and bond return shocks are modeled as the product of their long and short term components:

$$h_{z,t} = m_{z,t} \times g_{z,t}, \quad z = \{e, b\}. \quad (9)$$

The long-term component $m_{z,t}$ captures secular changes in stock and bond return volatilities, possibly associated with secular changes in the overall economic environment. We model this component using a backward looking Gaussian kernel with a bandwidth of 360 days, excluding the last 5 days to avoid contamination by recent FTS events (see Appendix B for details on the kernel method). The bandwidth of 360 days was chosen to reflect macro-economic cyclical variation; it implies that the kernel's half life corresponds to the average length of US postwar recessions (11 months).

The short-run component $g_{z,t}$ follows a two-state RS model that either lowers or increases the daily equity (bond) volatility relative to its long-term component:

$$g_{z,t} = \begin{cases} a_z < 1 & \text{if } S_t^z = 0 \\ b_z \geq 1 & \text{if } S_t^z = 1 \end{cases}, \quad z = \{e, b\}. \quad (10)$$

The conditional correlation between the return residuals is specified as:

$$\rho_t = -1 + 2 f \left(\theta_t^{LR} + \sum_{i,j=\{L,H\}} \theta_{ij} + \theta_{FTS} S_t^{FTS} \right) \quad (11)$$

where $f(\cdot)$ is the logistic function. The correlation has three components. First, θ_t^{LR} is a long-run component reflecting slow-moving macroeconomic developments. For example, the subsiding importance of aggregate supply shocks might have contributed to the switch in the sign of stock and bond return correlations (see e.g. Ermolov (2017)). We specify θ_t^{LR} as $\ln \left[\frac{(1 + \rho_t^{LR})}{(1 - \rho_t^{LR})} \right]$, where ρ_t^{LR} is calculated using a backward-looking kernel method with a bandwidth of 360 days (again lagged 5 days). The second component of the correlation takes one of four values depending on the bond and equity regimes: $\theta_{ij} = \theta (S_t^e = i, S_t^b = j)$. Finally, the third term with $\theta_{FTS} < 0$ imposes that the stock-bond return correlation is particularly low, or even negative, during FTS

episodes.

The conditional return volatilities in this model are not simply a function of the shock volatilities but also a function of the jump terms. Similar to the conditional expected returns, there are 3 and 6 different regimes to consider for the conditional volatilities of equity and bond returns, respectively. The expressions are shown in Appendix C. The derivations, which are available upon request, take into account the covariance between the regime variables and the jump terms.

2.2 Estimation and Empirical Results

Our dataset consists of daily stock and 10-year government bond returns for 23 countries over the period January 1980 till June 2015. Our sample includes two countries from North-America (US, Canada), 18 European countries (Austria, Belgium, Czech Republic, Denmark, France, Finland, Germany, Greece, Ireland, Italy, Netherlands, Norway, Poland, Portugal, Spain, Sweden, Switzerland, UK), as well as Australia, Japan, and New-Zealand. We use Datastream International’s total market indices to calculate daily total equity returns, and their 10-year benchmark bond indices to calculate government bond returns, both denominated in local currencies. For countries in the euro zone, we use returns denominated in their original (pre-1999) currencies (rather than in synthetic euros). For all European countries except Denmark, Norway, Switzerland, and the UK, German government bonds serve as the benchmark; for all other countries, local government bonds serve as the benchmark.

2.2.1 Estimation Methodology

We estimate the RS model, specified in Equations (1) through (11), by maximum likelihood following Hamilton (1994). We assume that the agents in the model observe the true regimes while the econometrician does not. To identify the regimes, we use the smoothed regime probabilities, which represent regime probabilities conditional on full sample information (see Kim (1994); Hamilton (1994)).

RS models have likelihoods that are not globally concave and may possess multiple local optima. Apart from using multiple starting values, we mitigate this estimation problem by imposing several reasonable economic restrictions on the model. First, as discussed in Section 2.1.2, we impose a number of economic restrictions on the relative expected returns across regimes. Second, we fix the

constants (α_0^i and γ_0^i) in the RS model for each country to be a weighted average of the sample mean and the expected return implied by the CAPM. This procedure is meant to address the problem that historical averages are poor estimates of expected returns, a problem that is further exacerbated by the different sample periods across countries in our analysis. The procedure is detailed further in the Online Appendix.

Because the model remains heavily parameterized, our benchmark estimation considers the joint likelihood for all 23 countries, assuming that the parameters are the same across countries (except for α_0^i and γ_0^i , which are determined as indicated above), but with country-specific regime variables. The construction of the likelihood assumes that shocks and regime variables are uncorrelated across countries. We refer to the appendix in the NBER version of Bekaert et al. (2001) for a detailed derivation of the joint likelihood function for a similar model. The parameter estimates can therefore be viewed as “pooled” estimates reflecting 23 different draws from a worldwide population distribution. In population, the duration of a FTS regime and the differences in conditional expected returns between a FTS and a non-FTS regime are identical across countries. However, many country-specific features remain: the regime variables are country-specific, and so is the timing of regime switches; shock volatilities and correlations vary across countries as they contain long-run components that are estimated using data for each country; finally, the unconditional means of the returns are also different across countries.

We also estimate the model country-by-country to check the robustness of our results. However, because the parameter estimates and their implications appear remarkably robust, we focus our discussion on the all-country model, relegating the discussion of country-by-country models to the Online Appendix.⁴ In Section 5, we also consider a “global” version of the model.

2.2.2 Parameter Estimates

Table 1 (Panel A) reports the parameter estimates at the global optimum.⁵ The first set of parameters are the transition probabilities. Both equity and bond volatility regimes are highly persistent, with the low volatility regimes slightly more so ($P_i > Q_i$; $i = e, b$). The expected durations of

⁴For example, Figure 1 in the Online Appendix shows for the US that the smoothed FTS probabilities from the pooled model are nearly identical to those from a bivariate RS model using US data only.

⁵All the best runs featured $A < B$, but we did find some local optima with $A > B$. One local maximum (with $A < B$ and B relatively low) implies very ephemeral FTS, and would produce a very low number of FTS days. Not imposing the expected return constraints delivers the same global optimum.

high equity and bond volatility regimes are 32.1 and 31.6 days, respectively. Conditional on being in the high equity volatility regime but not in a FTS the day before, the probability of switching to the FTS regime is slightly below 1% ($A = 0.9\%$). Once in the FTS regime, the probability of staying is high at $B = 98.8\%$. The average FTS regime lasts on average 23.19 days ($1/(1 - Q^e B)$). As a result, the population FTS incidence implied by the model, reported in Panel B of Table 1, is relatively high at 4.66% (3.31%+1.35%). Later in Section 3, we use this population FTS incidence of 4.66% to discipline the two alternative models.

The next set of parameters govern the conditional mean of bond and equity returns and we discuss the economic implications in more detail in the next sub-section. The pure regime shift effects for both bonds and equities ($\alpha_1, \alpha_2; \gamma_1, \gamma_2$) are smaller than the FTS related jump effects. For example, the onset of a FTS or a FTR is accompanied by significant changes in equity returns ($\alpha_{FTS}(1 + \nu_e) = -5.58\%$, $\alpha_{FTR} - \alpha_{FTS}\nu_e = 3.59\%$), much larger in magnitude than those associated with switches between equity volatility regimes ($\alpha_1 = -0.91\%$; $\alpha_2 = 1.22\%$). The FTR is also associated with a notable decline in expected bond returns ($\gamma_{FTR} - \gamma_{FTS}\nu_b = -1.46\%$), larger in magnitude than the jump effects associated with the onset of a FTS ($\gamma_{FTS}(1 + \nu_b) = 0.42\%$) or switches between bond return volatility regimes ($\gamma_1 = -0.82\%$; $\gamma_2 = 0.09\%$). The return effect on subsequent days of a FTS are estimated to be much smaller for both equities ($\alpha_{FTS}\nu_e = -0.13\%$) and bonds ($\gamma_{FTS}\nu_b = 0.05\%$).

The last set of parameters characterize the volatility dynamics. First, the equity stress regime has a volatility that is 55.4% (b_e) above the long-run volatility component, while the low equity volatility regime has volatility only 69.1% (a_e) of the long-term level. The corresponding statistics for bond return volatilities are 43.6% and 71.9%, respectively. Second, stock-bond return correlations are substantially lower during FTS episodes ($\theta_{FTS} = -1.338$). The economic effect depends on the value of the long-run correlation and the regime constellation and appears large. For example, if the long-run correlations and regime dependent correlation parameters were all zeros, the FTS regime would feature a stock-bond return correlation of -56.8%. We do note a moderate increase in stock-bond correlations when both equity and bond volatility are in the high volatility regime ($\theta_{HH} = 0.349$)⁶.

⁶We verified that the parameter estimates are remarkably robust to variations in the kernel bandwidth and length of exclusion window. With only one exception, all parameters are within 95% confidence intervals of the original estimates when the bandwidth (exclusion period) is set to either 250 or 500 days (10 days).

2.2.3 Expected Returns and Return Dynamics during FTS events

The RS model provides estimates of expected equity and bond returns across regimes. An accurate assessment of the risk premiums is of paramount importance in finance; however, the high volatility of equity returns and the potential time variations in conditional risk premiums make it a challenging task. Merton (1980)'s seminal article proposes to impose positivity on risk premiums and link them to asset return variances. Our RS model follows a similar approach. First, the economic restrictions imposed ensure that risk premiums are higher in high volatility and FTS regimes. Second, by linking the constants in the model to weighted averages of average historical returns and CAPM-based estimates of expected returns, we impose overall positivity (see Table 1 in the Online Appendix).

The last column of Panel A in Table 2 presents the expected returns conditional on each of the three possible combinations of equity and FTS regimes for the US. Note that these expected returns vary from country to country reflecting the country specific means, α_0^i . However, the return differences between regimes are identical across countries reflecting the joint estimation. We find expected equity returns to be around 10% both in the high equity volatility, non-FTS regime and in the low equity volatility regime, but rise sharply to 28% when the economy moves into the high volatility, FTS regime.

The preceding columns decompose the total expected equity returns into different components (as given by Equation (6)). The expected equity return in the low equity volatility regime is 2.73% below the country-specific estimate of the average annualized return (α_0^i), primarily because of the prospect of moving into the high volatility regime (with probability $(1 - P^e)$), which lowers the return by 2.59%, but also due to the possibility that such a move is accompanied by an onset of a FTS (with probability $(1 - P^e)A$), which reduces the average return further by 0.14%.

The expected equity return in the high equity volatility, FTS regime is boosted by the possibility of switching to the low equity volatility state (with probability $(1 - Q^e)$) and that of moving out of the FTS regime but staying in the high volatility regime (with probability Q^eB), as both are associated with positive return impact (of α_2 and α_{FTR} , respectively). In contrast, the prospect of staying in the FTS regime (with probability of Q^eB) lowers the expected equity return. The first effect (in total +47.19%) dominates the second (-31.95%), leading to an expected return that

is 15.24% above the country-specific mean. Our findings are therefore in line with Martin (2017), who finds the (option-implied) market risk premium to be very volatile and above 20% in periods of market stress, and with similar results in Ait-Sahalia et al. (2018), our findings suggest that not all equity stress periods are created equal: only FTS events generate steep, though short-lived, spikes in expected equity returns.

Panel B of Table 2 reports expected bond returns conditional on each of the six possible regime combinations as well as the contributions of individual components (see equations in Section 1.2 of the Online Appendix). We highlight three key findings. First, irrespective of the equity volatility and FTS regime, expected bond returns are about 3% higher in the high relative to the low bond volatility regime. Second, our estimates imply expected bond returns to be about 2.60% lower in the FTS regime, as the negative return impact (γ_{FTR}) from a switching out of a FTS regime (with the probability $(1 - Q^e) + Q^e B$) outweighs the positive impact ($\gamma_{FTS} v_b$) from a continuation of the FTS regime (with the probability $Q^e B$). Finally, as indicated by the final rows of Panel B, expected equity returns are slightly lower (-0.40%) than expected bond returns in the more common, low equity and bond return volatility regimes, but are much higher (16.24%) in the FTS regime.

2.2.4 Conditional Return Volatilities

Table 3 reports model-implied annualized return volatilities across regimes for equities (first two columns) and bonds (last two columns), calculated using the expressions in Appendix C. The equity return volatility only depends on the equity and FTS regimes, while the bond return volatility depends on all three regimes. Equity volatility is substantially higher in the high equity volatility regime than in the low volatility regime, regardless of the FTS regime (25.36% and 27.66%, compared with 16.18%). For given equity volatility and FTS regimes, bond return volatility in the high bond volatility regime exceeds that in the low bond volatility regime by around 2%, with the highest bond return volatility obtained when equities are in the FTS (and hence high volatility) regime (9.63%). The conditional bond return volatilities in this model can be decomposed into four components, deriving from (1) the volatility jump terms; (2) the FTS jump term, the FTS regime variable, and their interaction; (3) the covariance between the volatility jump terms and the FTS jump and regime terms; and (4) volatilities of the shocks. The Online Appendix provides a full decomposition, which shows that the variances of the shocks typically account for the bulk of

the conditional variances of the returns. The jump term and its covariance with the FTS variables have small contributions overall, but the FTS component contributes over 10% to the equity return variance and over 20% to the bond return variance in FTS regimes.

2.2.5 Characterizing FTS Days in the RS Model

Despite the “pooled” nature of our estimation, each country has its unique realizations of regimes, and the conditional volatilities are estimated using information from the realized returns (see Section 2.2.1). Therefore, the in-sample estimates of the FTS incidence, the return impact, conditional return volatilities, and bond-equity return correlations can all differ across countries. The second column of Panel A of Table 4 shows that FTS days make up on average 4.73% of our sample, with a narrow interquartile range (IQR) of 4.03-5.48%. Detailed country-by-country results reported in the Online Appendix shows that the US has the highest FTS incidence (6.74%) and New Zealand the lowest (1.06%). The next 6 columns show that equity (bond) returns are on average much more negative (positive) on first days of FTS spells (-0.91% vs average of -0.33% over all FTS days for equities; 0.19% vs 0.11% for bonds).

The next two columns report the ratio of return volatilities on FTS days to those on non-FTS days. Equity volatility is on average 95% higher in the FTS state, while bond volatility is about 23% higher. The final three columns report daily stock-bond return correlations using FTS days only (column 11), the full sample (column 12), and using non-FTS days only (column 13). On non-FTS days, stock-bond return correlations are on average slightly positive for countries with data available since the early 1980s, but slightly negative for countries with shorter (more recent) samples. Across all countries, the average stock-bond correlation is -4.18% on non-FTS days, with an IQR of -8.67% to 2.08%. On FTS days, stock-bond correlations are considerably more negative with an average of -58.5% and a relatively tight IQR of -57.0% to -62.5%.

One might be tempted to identify FTS episodes simply based on these symptoms, including negative equity returns accompanied by positive bond returns, high equity return volatility, and a low correlation between bond and stock returns. Compared with such a naive approach, using a more structured RS model provides us with a richer characterization of the FTS episodes. For example, the FTS regime is estimated to be quite persistent, even though we impose no a priori restrictions on its persistence. In addition, the exact nature of the “equity market stress” is endogenously

determined by the model rather than exogenously specified. We find that bond returns are also more variable in FTS regimes, even though the model did not impose this condition, and that the correlations between bond and stock returns are dramatically lower in FTS regimes. Finally, the model differentiates between the FTS regime and a non-FTS, equity market stress regime. We find that the FTS regime is associated with sizable risk premiums, while risk premiums associated with the “non-FTS” equity market stress regime are trivial.

3 A FTS Measure

Our key idea is to identify the “symptoms of a FTS”—in terms of its effect on asset returns, correlations and volatilities—and then use ONLY data on bond and stock returns to identify those events. Because our goal is to document empirical regularities associated with FTS that can be used to guide theoretical research on FTS, we seek to be conservative in our estimates of the FTS events. We do so by averaging across multiple models. We start from a baseline model, the bivariate RS model, discussed above in Section 2. We then develop two alternative statistical models to capture the FTS symptoms and describe them in Sections 3.1 and 3.2 below. We calibrate both models to deliver the same average FTS incidence as that implied by the bivariate RS model (4.66%). The model averaging procedure is detailed in Section 3.3.

3.1 A Threshold FTS Model

3.1.1 The Model

Bae et al. (2003) (BKS henceforth) study contagion across emerging markets by counting co-exceedance events, defined as joint occurrence of extreme returns beyond a certain threshold, and assess the significance by comparing the actual count to what can be expected under certain standard (such as Gaussian) distributions. Our first alternative model is specified in a similar fashion, by counting the joint occurrence of some or all FTS symptoms stated earlier for given thresholds. Denote $r_t = (r_{e,t}, -r_{b,t})^T$ and assume that $r_t \sim N(\mu, \Omega_t)$. We first define the threshold. Using the cumulative normal distribution, we calculate the probability that the equity return and the negative of bond return will both be κ standard deviations below their mean as:

$$Prob_{ths,t} = N_{cdf} \left(\begin{bmatrix} -\kappa\sigma_{e,t} \\ -\kappa\sigma_{b,t} \end{bmatrix}, 0, \Omega_t \right), \quad \Omega_t = \begin{bmatrix} \sigma_{e,t}^2 & \rho_t^{LR}\sigma_{e,t}\sigma_{b,t} \\ \rho_t^{LR}\sigma_{e,t}\sigma_{b,t} & \sigma_{b,t}^2 \end{bmatrix}$$

where $\sigma_{e,t}$ and $\sigma_{b,t}$ are time-varying equity and bond market volatilities and Ω_t the time-varying variance-covariance matrix. We implicitly assume zero mean daily returns for both equities and bonds. As in the RS model, the slow-moving time-variation in volatilities and correlations is computed using a backward kernel methodology, with a 360-day bandwidth excluding the last 5 days. The parameter κ controls how “extreme” bond and equity returns need to be to qualify as FTS events. $Prob_{ths,t}$ gives us the probability threshold that all FTS observations must surpass. For each day in our sample, we then compute the joint probability of observing an equity return at least as negative, and a bond return at least as positive, as the realized returns, under a normal distribution⁷ with the prevailing variance-covariance matrix:

$$Prob_{obs,t} = N_{cdf}(r_t, 0, \Omega_t).$$

An observation is deemed “extreme” if this probability falls below the threshold probability, $Prob_{obs,t} < Prob_{ths,t}$. The FTS probability on day t is then computed as:

$$I\{r_{i,t}^b > 0\} \times I\{r_{i,t}^s < 0\} \times I\{Prob_{obs,t} < Prob_{ths,t}\} \times (1 - Prob_{obs,t}). \quad (12)$$

The first two indicator functions impose the requirement that equity (bond) returns are negative (positive); the third indicator function guarantees that the observed combination of negative equity and positive bond returns is an extreme outcome. The last term ensures that a more extreme combination of bond and equity returns is assigned a higher probability of FTS .

3.1.2 Calibration results

Figure 1 plots cross-country averages of the FTS incidence (left axis) and the return impact (defined as the difference between bond and equity returns; right axis) for various levels of κ . The dashed lines show the associated IQRs. The FTS incidence decreases, and the return impact increases, with κ . The blue horizontal line indicates the target FTS incidence of 4.66%; we reach this target at $\kappa = 1.26$, when the return impact averages 2.72% with a tight IQR of 2.46-2.98%.

⁷The actual returns exhibit fat tails. We therefore redid the threshold model assuming a t -distribution that accommodates fat tails. This exercise is described in the Online Appendix. The alternative distributional assumption does not materially affect the identification of FTS events.

3.2 The Ordinal FTS Model

3.2.1 The Model

Our third model builds on the “ordinal” approach in Hollo et al. (2012), which proposes a composite measure of stress in the financial system. The methodology uses the empirical cumulative distribution of several stress indicators and then aggregates these ordinal numbers into one summary stress indicator. Analogously, we select three FTS indicators, based on the FTS symptoms we listed before:

- i. The difference between the bond and stock return (“return impact”);
- ii. The difference between the long- and short-term stock-bond return correlation (“correlation dip”);
- iii. The difference between the short- and long-term equity return volatility (“volatility spike”).

We measure long and short-term volatilities and correlations using a backward looking Gaussian kernel with bandwidths of 360 and 7 days, respectively, and exclude the most recent 5 days when calculating the long-term measures.

The three indicators above are continuous variables, with higher values typically observed during a FTS. We convert these continuous variables to ordinal numbers by replacing each observation by its ranking (in ascending order) over the sample period, normalized by the total number of observations; a value close to one (zero) is therefore associated with a higher (lower) likelihood of FTS. For instance, a value of 0.95 for, say, the return impact implies that only 5 percent of the observations over the full sample have a return impact larger or equal than the value observed on that day.

To further convert those ordinal numbers to a measure of the FTS probability, we proceed in two steps. First, we create a composite “ordinal” index that takes values in the $[0,1]$ interval, denoted OI_t , by averaging the three ordinal numbers at each point in time.⁸ This yields a number for each day that can be interpreted as a cumulative density function probability. Numbers very close to one, such as 0.99, can be viewed as a strong indicator of a FTS; however, it’s less clear how to assess the FTS probability for numbers further away from one.

⁸We also considered taking into account the correlation between the various variables as suggested by Hollo et al. (2012), where higher time series correlations between the stress-sensitive variables increase the stress indicator’s value. However, our inference regarding FTS episodes was not materially affected by this change.

To solve this problem, in the second step, we transform the ordinal index into an ordinal measure of FTS probability by imposing the requirement that all FTS events need to satisfy some “weak” FTS symptoms, including: (1) a strictly negative equity return and a strictly positive bond return; (2) a negative short-term bond-equity return correlation that is below the long-term level; and (3) a ratio of short-term to long-term equity return volatility that is larger than $\kappa \geq 1$. The parameter κ determines the incidence of FTS events in this model (see Section 3.2.2 below). To implement this requirement, we first collect the ordinal numbers from all days that satisfy those three “weak” FTS symptoms for a given κ . We view the minimum of this set of ordinal index values, denoted OI_{ths} , as a threshold: All observations with an ordinal number below this threshold ($OI_t < OI_{ths}$) are assigned a FTS probability equal to zero. For observations with an ordinal number above the threshold, we set the ordinal measure of FTS probability to one minus the percentage of “false positives” (FP), calculated as the percentage of observations with an ordinal number above the observed ordinal number that do not match our “weak” FTS criteria. The number of false positives will be substantial for observations with ordinal numbers that are relatively low, though still above the minimum threshold, but will be close to zero for observations with ordinal numbers close to one. To summarize, the ordinal measure of our FTS probability is constructed as

$$Prob_{OI,t}^{FTS} = I \{OI_t \geq OI_{ths}\} \times (1 - FP). \quad (13)$$

As an illustration, suppose that the lowest ordinal value among all observations satisfying the three “weak” FTS criteria is 0.75. This procedure will assign zero FTS probability to all observations with ordinal values below 0.75. Now consider an observation with an ordinal value of 0.84. Suppose 20% of the observations with ordinal values above 0.84 do not satisfy the “weak” FTS criteria. This procedure will assign a FTS probability equal to $1 - 20\% = 80\%$.

3.2.2 Calibration results

Figure 2 plots cross-country averages of the FTS incidence (left axis) and the return impact (right axis) for various levels of κ , the minimum ratio of short- to long-term equity volatilities. The dashed lines show the associated IQRs. Again, FTS incidence decreases, while return impact increases, with κ . The target FTS incidence of 4.66% is reached when κ is set to 1.72. The average return impact at this value of κ is 2.32%, with an IQR of 1.98-2.54%.

Table 5 provides some insights into the calculation of the ordinal FTS measure. The second column shows that the threshold level, the minimum value of the ordinal index among all observations that satisfies the three “mild” FTS conditions, is on average 68% with an IQR of [66.5%, 69.7%]. The third column shows that the percentage of observations with ordinal indices above the threshold averages 15.61% with an IQR of 13.54%-17.50%. The tight IQRs in both cases indicate that the raw ordinal indices behave consistently across countries. Our measure is also heavily influenced by the number of false positives, the fraction of observations with ordinal numbers above the threshold but not satisfying the weak symptoms. Once those are taken into account, the fourth column shows that among the observations with ordinal indices above the threshold, on average 31.1% (with an IQR of 26.7%-35.5%) have an ordinal measure of FTS probability above 50% and hence would be classified as a FTS according to this measure. Multiplying this number with the percentage number of observations above the threshold essentially produces the FTS probability. The cross-country average FTS incidence is close to the 4.66% target.⁹

3.3 Aggregate FTS Incidence

So far, we have three models that can be used to assess the probability that a given day is experiencing a FTS. The FTS incidence is endogenously determined within the RS model. By contrast, the FTS incidence in the two other models depends on the κ parameters, which we calibrate to deliver the same average FTS incidence as the benchmark RS model. We now use averaging across the three models to derive our preferred, conservative estimates of the FTS events.

To aggregate information across the three models, we rely on the existing literature on regime classification based on qualitative variables (see e.g. Gilbert (1968)).¹⁰ We view the three methods as yielding a multivariate Bernoulli draw at each point in time on FTS events with probabilities to be estimated. We extract the joint probability that the RS model and at least one of the threshold and ordinal models identify a FTS for a particular day based on a multivariate Bernoulli distribution using the method proposed by Teugels (1990) (see Appendix D for technical details). This computation requires not only the probabilities of the three Bernoulli random variables at each point in time but also their covariances. Obviously, inference based on the 3 different measures

⁹We selected κ from a two digit grid to minimize the distance with the target regarding FTS incidence.

¹⁰We also considered a naive aggregator which simply averages the probabilities at each point in time, and sets the FTS dummy to 1 when that average is above 0.5. Both procedures largely select the same periods as FTS episodes.

is positively correlated. In these day-by-day computations, we use full sample estimates of the covariances between the different FTS dummies (the underlying Bernoulli variables). Following the standard classification rule, we identify a FTS event when the joint FTS probability exceeds 50%. More specifically, define $p_{k_1, k_2, k_3} = Prob(I_{RS} = k_1, I_{Tr} = k_2, I_{Ord} = k_3)$, with $k_1, k_2, k_3 \in \{0, 1\}$ and I an indicator function that equals one when the RS, the threshold (Tr), or ordinal (Ord) model indicates a FTS. We then set the aggregate FTS dummy equal to one when either $p_{1,1,1} + p_{1,1,0} > 0.5$ or $p_{1,1,1} + p_{1,0,1} > 0.5$, and zero otherwise.

Model averaging is important. Figure 3 illustrates this for the US, showing estimates of the FTS probabilities from the three models as well as the aggregate measure. Although the RS model clearly identifies many FTS episodes, it remains inconclusive on many days by assigning FTS probabilities above 0.5 but below 0.9. Relative to the RS model, the two other models identify more FTS days with very short durations as well as more days with FTS probabilities between 0.5 and 0.9. By comparison, the joint measure retains some relatively longer-lasting FTS episodes (e.g. around October 2008) as well as some short-lived ones (e.g. during October 1987). Except for the 1987 stock market crash and a short spell preceding the 1990 recession in the US, our measure identifies very few FTS in the pre-1995 period. By contrast, the post-1995 period is marred with FTS spells, including the 1997 Asian crisis, the Russian crisis and LTCM debacle in 1998, the 2007-08 global financial crisis, and the subsequent European sovereign debt crisis. Outside those well-known major crises, this measure also picks up some spells that are not as easily recognized as FTS. For example, a FTS appeared to occur on 13 October 1989, when a large leveraged buyout deal for the UAL corporation collapsed with negative ramifications for the junk bond market. On June 29, 2015, fears about Greece defaulting on its sovereign bonds also seemed to trigger a FTS event.

The first rows of Table 6 show that the cross-country FTS incidence equals 1.74%, with an interquartile range of 1.55-2.09%. During FTS days, equities drop on average 2.29% (IQR of [-2.50%; -2.02%]) while Treasury bonds increase on average with 0.43% (IQR of [0.39%; 0.46%]).

Our methodology is intricate and requires non-linear estimation. However, by aggregating information from three different models, we obtain a plausible, conservative way of identifying FTS events that is more systematic and reliable than simply eyeballing the data and handpicking the dates. Our methodology does not merely identify high volatility periods in equity markets either. To see this, Table 6 looks at the overlap between our FTS days and stress times in equity markets.

To identify the latter, we measure equity market volatility using a backward-looking Gaussian kernel with bandwidths of either 5 or 25 days for a given day. For each country, we then select the same number of days with the highest equity market volatilities as the number of FTS days we identify for that country. The table reports the percentage of days that fall into both sets. The overlap using the shorter 5-day window averages 21.6%, with an IQR of 14.9-28.0%, and is never higher than 35% (reached by Portugal). Using the longer 25-day bandwidth reduces the average overlap to less than 20%. Even though some overlap between the two sets is expected as “equity market stress” is one of our FTS symptoms, this exercise shows that our method cannot be replicated by looking at equity volatility alone.

Our methodology also does not simply select “market downturns”. Of course, by its very definition, a FTS event will often coincide with an equity market downturn, but not all equity market downturns are FTS events. In fact, the percentage of days with negative, respectively minus 2 standard deviations, equity market returns that are also FTS is only 3.8% (IQR 3.38-4.58%), respectively 25% (IQR of 21.5%-30.3%). In addition, we also find little overlap between our FTS days and recession periods. For the US, only 21% of FTS days occur during NBER recessions. For other countries, only 15% of FTS occur during recessionary periods, defined as two consecutive quarters of negative real GDP growth.

3.4 Robustness

The intricate nature of our methodology does raise the concern of whether it is robust to different parameter choices and whether its results are stable over time. To address the first question, we verify whether the FTS incidence is robust to three parameter choices governing the computation of long and short-term volatilities. In particular, we consider two alternative bandwidths in computing the long-term component of volatility (250 and 500 days, instead of 360 days in the baseline), one alternative bandwidth for the computation of the short-term volatility (10 days instead of 7 days), and a longer exclusion window (10 days instead of 5 days) to prevent FTS events from contaminating the computation of the time-varying volatilities and correlations. This yields a total of 11 alternative parameter configurations. For each alternative configuration, we re-estimate the RS model, re-calibrate the threshold and ordinal models to fit the new FTS incidence given by the RS model, and then re-compute the aggregate FTS incidence. Detailed results are available in the

Online Appendix, but we summarize the main findings below:

1. The FTS incidence is little affected overall, with the dispersion of the median FTS incidence across countries being only 0.16% across all parameter specifications. The FTS incidence is weakly increasing in the length of the bandwidth used to compute the long run volatilities. This is expected because FTS events tend to happen during stress periods with persistently higher volatility; therefore, a shorter long-run volatility window would lead to higher long-run volatility estimates and a higher volatility threshold for FTS events, decreasing the FTS incidence.
2. Similarly, the estimated median return impact on FTS days shows little variation across parameter configurations, with the dispersion across specifications being 7.1 basis points for equities and only 1.4 basis points for bonds.
3. The identified FTS days are also similar across different parameter specifications. According to the cross-country median estimates, more than 95% of the FTS days identified by our benchmark model are also identified as FTS days using any of the 11 alternative parameter configurations when the long-term bandwidth is set to 360 or 500 days, irrespective of other parameter values. The median percentages range between 84% and 88% when the long-run volatility bandwidth is 250 days, as this shorter window raises the volatility threshold for FTS events. Conversely, the bulk (between 93.9% and 99.6%) of the FTS days identified by the alternative models are also FTS days under the benchmark model when the long-term volatility bandwidth is 250 or 360 days, with the overlap dropping slightly to about 86% when the bandwidth is 500 days.

We also examine whether our results were robust to parameter stability concerns. To do this, we re-estimate the RS model excluding either the first 15 or the last 10 years, and then examine the robustness of the FTS incidence and other statistics across different sample periods. The parameters of the RS model are remarkably robust across these three different samples, resulting in quite similar FTS evidence for the overlapping years. More details are given in the Online Appendix, and we come back to the question of parameter stability in Section 4.2.

4 The Economics of a FTS

Now that we have identified the FTS event days, this section tries to characterize a typical FTS event. Section 4.1 examines the return profile and persistence of a FTS spell. Section 4.2 considers how correlated our FTS measure is with alternative indicators of market stress and risk aversion and whether FTS is associated with large real (macro-economic) consequences. Section 4.3 examines whether the large changes in asset prices during FTS spells are accompanied by large fund flows using US data. Finally, Section 4.4 tries to shed light on whether a FTS is primarily a flight-to-quality or to liquidity by looking at price responses of corporate bonds and equities with different quality and liquidity characteristics.

4.1 Impact and Persistence

Figure 4 summarizes the average returns on equities and bonds as well as the bond-equity return differential (“return impact”) before, during, and after FTS events. The horizontal axis records 7 stages on a time line, including 5 to 1 day before, 1 day before, the first day of, the second through the second to last day of, the last day of, and 1 to 5 days after a FTS spell. Returns on the vertical axis are expressed in percent terms. The dashed lines connect the average returns across countries, while the vertical bars represent the IQRs across countries.

The graphs clearly show the key characteristics of a FTS spell. Outside FTS spells, equity and bond returns are statistically indistinguishable from zero. Equity returns are slightly but significantly positive, while bond returns slightly but significantly negative, on the day before the start of a FTS spell. The FTS spells itself are associated with sharply negative (positive) equity (bond) returns, with the effects slightly larger in magnitude in the beginning and towards the end of a spell. To see how large these impacts are, we note that the 2.79% return impact on the first day of a FTS represents a 2.3 standard deviation move above its daily average of 0.013%, based on the ensemble standard deviation of return impact in the sample.

Intuitively, FTS spells are mostly short-lived. Expressed in fractions over all countries, we find that 62% of the spells last 1 day, 23% last two days, 9% last three days, and 6% last longer than 4 days, but none last longer than 10 days. In the Online Appendix, we show how this distribution differs across the three models, with the threshold model delivering very short-lived spells (never

longer than 5 days) and the RS model delivering more persistent spells (because regime identification often relies on second moments, which tend to be highly persistent).

4.2 Alternative Market Stress Indicators

In Table 7, we investigate the comovement between our FTS dummies and five types of alternative stress indicators, consumer confidence, safe-haven currencies, the TED spread, the price of gold, and option-implied equity volatility. We regress those indicators on our FTS dummy for each country and a constant, and report the slope coefficients for the US, Germany and the UK, as well as the average, standard deviation, and top/bottom quartiles of those parameter estimates across all available countries. The second to last column shows the number of countries for which the parameter estimates are significant, using White (1980) heteroskedasticity-consistent standard errors. The last column shows the number of countries for which data is available. From now onward, many of our cross-country tables will have this format.

The first set of stress indicators comprises sentiment/confidence indices. Many types of such indices have been developed in the literature (see e.g. Bekaert and Hoerova (2016)). We use the (seasonally-adjusted) OECD consumer confidence indicators, because they are county-specific and available for all countries in our sample except for Norway. Because these sentiment variables are only available on a monthly basis, we regress their monthly changes on the fraction of FTS days within the month. The FTS beta is significantly negative in 19 of the 22 countries. The average effect, -0.389, implies that for a month with a FTS incidence equal to the average value among all FTS months, 0.22, on average we observe a 8.5 percentage point drop in consumer confidence.¹¹

Second, we regress percentage changes in the values of three safe haven currencies—the Swiss Franc, the Japanese Yen, and the US Dollar, measured in units of local currency per unit of the safe currency—on the country-specific FTS dummies using daily data for all but the three safe currency countries. On average over a FTS day, the three safe currencies appreciate by 0.33% (Swiss Franc), 0.44% (Yen), and 0.07% (US Dollar), respectively. The appreciation of the Swiss Franc and Yen following a FTS are significant in 20 or more countries. The evidence for the US dollar is less strong, with significant depreciations observed in almost as many countries (6) as significant appreciations

¹¹We also find that the well-known Baker and Wurgler (2006) sentiment indicator (purged of business cycle fluctuations) and the Michigan consumer sentiment index decrease significantly when there is a FTS in the US, as does the famous German Ifo business cycle indicator with high FTS incidence in Germany.

(7) following a FTS.

The third indicator is the TED spread, the difference between the three-month LIBOR rate in the local currency and the corresponding three-month T-bill rate.¹² The TED spread is a direct measure of the perceived default risk in the banking sector and also a frequently used indicator of the perceived credit risk in the broader economy, and it tends to spike up at times of crises (see Brunnermeier (2009) for its role in the 2007-08 global financial crisis). We regress daily TED spread changes on the country-specific FTS dummies. For the US, the TED spread on average increases 5 basis points (bps) on a FTS day. On average across all countries, the TED spread only edges up 1 basis point on a FTS day, and the increase is only significant in 5 out of 19 countries. This finding suggests that the FTS episodes identified here are not always a credit event.

The fourth indicator we consider is the price of gold, and we measure its changes using daily returns on the S&P GSCI gold index (in US dollar and percentage terms). The average daily return on a FTS day is only 3 bps and almost never significant. However, the FTS beta of gold returns becomes positive and statistically significant for half the countries, averaging 0.20% per day, once we control for global equity market exposure. In other words, gold appears to provide some hedge against FTS events, after adjusting for its positive market exposure. Relatedly, Baur and McDermott (2010) show gold to be a safe haven and hedge for the European and US stock markets.

The final indicators are implied volatilities on major stock indices. The VIX index on the US's S&P 500 index is often viewed as a "fear" index, and is an important input in a number of risk aversion indices (see Bekaert and Hoerova (2016)). We use the VIX for the US and Canada. In addition, we use the VFIS (on the FTSE100) for the UK; VDAX on Germany's DAX index for Germany and all the non-UK European countries, and the VJX on the Japanese Nikkei 225 index for Japan, Australia and New Zealand. Daily changes in those indices constitute the dependent variable in the regressions. The VIX increases on average by 3.18% on a US FTS day. The volatility effect is significant at the 5 percent level in all countries, averaging 2.25%. Bekaert and Hoerova (2014) decompose the squared VIX into a variance risk premium, which is particularly sensitive to changes in risk aversion, and the "physical" conditional variance for the US stock market. When we examine the variance risk premium and the conditional volatility separately, both have FTS

¹²We have TED spread data for 19 countries but not for Ireland, Austria, the Czech Republic and Poland.

betas that are positive and statistically significant, suggesting that both risk aversion and expected stock market volatility increase on FTS days.

To check the robustness and stability of our inference, we recalculate these comovements for the last 10 years of our sample, using FTS identified out-of-sample. To do so, we first re-estimate the regressions shown in Table 7, using the last 10 years of data and our full sample FTS estimates. The results are very similar to what is reported in Table 7, except that the US dollar has become a genuine safe haven currency over the last 10 years. Second, as discussed before, we re-estimate the RS model excluding the last 10 years of data. Keeping these parameters fixed, we then repeat our FTS identification procedure and re-estimate the regressions in Table 7 over the last 10 years. The results are reported in the Online Appendix. Both the magnitudes and the significances of the various coefficients are similar across the two sets of regressions. In addition, for all dependent variables except for the two gold variables, the number of countries for which the coefficients are significant is identical.

The VIX plays a critical role in studies that link economic uncertainty to real activity (see e.g. Bloom (2009)). Increased uncertainty associated with a FTS may lead companies to defer their investment and hiring decisions, weakening the economy. In the Online Appendix, we assess the link between current FTS incidence and future inflation and economic activity. We confirm that for the US, a higher FTS incidence in the current month is statistically significantly associated with lower inflation, lower industrial production growth, higher unemployment, and lower investment to GDP ratios in the future. Future real GDP growth is also lower but the decline is not statistically significant. The results are weaker when all countries are considered and significant in less than half of the countries. We also investigate whether FTS episodes affect investor expectations about the macro-economy, by examining the mean and dispersion of survey forecasts from Consensus Economics for inflation, industrial production, real GDP growth, the unemployment rate, and investment growth in the quarter following FTS episodes. With the caveat that these data were only available for a subset of countries, we do not find a strong association between FTS episodes and those macro forecasts. Finally, we regress three-month changes in the OECD leading indicator over the next three months on the FTS incidence within the current month. The OECD indicator is explicitly designed to provide early signals of turning points in business cycles, with a targeted lead time of about 6 to 9 months. Here, we find consistent and strong results: the FTS “beta” for

the OECD leading indicator is on average about -1% and the effect is statistically significant in 16 out of 23 countries. Overall, there appears to be some, albeit mixed, evidence that FTS episodes are associated with future declines in economic activity.

4.3 FTS and Mutual Fund Flows

The parameter estimates of the RS model suggest that FTS episodes are typically associated with dramatic yet short-lived changes in expected returns on equities and bonds. Of course, these price changes need not be accompanied by active trading and/or risk transfer between different investors. Kelley and Tetlock (2013), for example, show that US equity returns during extended trading hours are as volatile as during regular trading hours, even though trading volumes are much lower during extended trading hours. The international contagion literature has also allowed price spillovers to happen without capital flows, as in the “wake-up call” hypothesis, see Bekaert et al. (2014a). However, it is conceivable that in a FTS, more risk averse investors (e.g. retail investors) rebalance their portfolios towards safe assets, while less risk averse or more sophisticated investors provide the insurance the other type of investors seek, earning elevated risk premiums in the process.

To conclusively confirm or refute this conjecture requires detailed data on flows between different investment vehicles and on the ownership of these vehicles, and is beyond the scope of the paper. Nonetheless, as a first step, we obtain data on mutual fund flows from Thomson Reuters Lipper, which collects assets, returns, and distributions from virtually all US-registered open-end mutual funds and ETFs going back to 1992. About 75% of those funds report total assets under management (AUM) at both the weekly (Wednesday to Wednesday) and the monthly frequencies; the rest only report at the monthly frequency. Lipper calculates the flows as changes in AUMs over a month or week, adjusted for asset price variations. For funds reporting at the monthly frequency only, Lipper creates a weekly flows series by distributing the monthly flows evenly among the weeks within the month. We use all three sets of flow estimates in our analysis: (1) weekly flows for the 75% of funds reporting weekly, (2) weekly flows for all funds, and (3) monthly flows for all funds.

Lipper uses information from fund prospectuses to classify funds into different categories, such as funds that invest primarily in equities, in US Treasury securities, in US investment grade corporate bonds, and in US high yield corporate bonds, as well as money market funds and various subcategories. Amongst money market funds, we focus on those that invest predominantly in gov-

ernment securities, as they may provide investors with additional FTS benefits on top of long-term government bonds.

For our main results, we exclude ETFs, but the Online Appendix shows results including ETFs. ETFs present several challenges. First, it is a rapidly growing investment vehicle with inflows trending up over time. Second, rebalancing ETF portfolios typically incurs brokerage fees, making ETFs a costly vehicle to achieve the rapid rebalancing required in the face of a FTS. Third, most ETFs represent index funds and many are held through robo advisors or in institutional investor portfolios. They may therefore be part of “constant mix” portfolios which would rebalance in a contrarian fashion rather than be part of a flight-to-safety flow. Consistent with this intuition, our results including ETFs are robust but slightly weaker than the main results.

We examine the comovement of FTS spells with the flows of different types of funds, using a simple linear regression at the fund category (i) level:

$$flow_{t,i} = \alpha + \beta_{FTS,i}FTS_{t,US} + \bar{\beta}_{FTS,i}FTS_{t-1,US} + \varepsilon_{t,i} \quad (14)$$

where i is the type of fund (either equity, Treasury, corporate investment grade, corporate high yield, or government-only money market) and t represents either a week or a month¹³. The $flow_{t,i}$ variable is flows into funds of type i over the period t , as a percentage of the AUM at those funds at time $t - 1$.¹⁴ The $FTS_{t,US}$ variable is the percentage of days within a week or month that are identified as experiencing a FTS in the US. A regression on the contemporaneous FTS variable may underestimate the effect of FTS on fund flows. For example, if the flow effects occur with a slight lag and with some persistence, FTS events occurring towards the end of a week may affect flows in the following week but not in the current week. We therefore consider two different specifications. In one regression, we only consider the contemporaneous effect, denoted $\beta_{FTS,i}$; in the other regression, we also include the lagged FTS variable with a coefficient denoted $\bar{\beta}_{FTS,i}$, and measure the total FTS effect as the sum of $\beta_{FTS,i}$ and $\bar{\beta}_{FTS,i}$.

Table 8 reports the results using the three sets of flows data mentioned above. Across all specifications, FTS events appear to be associated with significant outflows from equity and high yield

¹³Edelen and Warner (2001), among others, document a strong relationship between net flows into equity funds and market returns in the U.S., but do not examine the effect of flights to safety or market stress on flows into different types of mutual funds.

¹⁴Lipper only provides AUM at the weekly frequency. For monthly regressions, we use AUM from the week that is the closest to the end of the month.

corporate bond funds and significant inflows into government-only money market funds, with larger effects at the monthly frequency or when the lagged FTS variable is included. Results using monthly data on all funds also show significant inflows into Treasury mutual funds and all money markets. The effects are economically important. For example, if there is a week where all days are FTS days, the AUM of equity (high yield corporate) funds drops by about 0.30% (0.42%), whereas the AUM of bond funds increases by 0.50% for the weekly and monthly reporting set.

We conclude that, at least in the US, mutual fund investors appear to be actively rebalancing their holdings from riskier into safer asset classes in response to FTS effects. It is well-known that mutual funds are predominantly held by retail investors.¹⁵ Therefore, the evidence presented here may be indicative of irrational retail investor behavior, considering the substantial returns risky asset investors can expect to earn following FTS events. More analysis is needed on this topic.

4.4 Flights-to-Liquidity or Flights-to-Quality?

Longstaff (2004) shows that up to 15% of the value of Treasury bonds can be attributed to liquidity premiums. Beber et al. (2009) use data from the euro-area government bond market to show that, at times of market stress, investors appear to demand liquidity more than credit quality. Those findings suggest that FTS may represent more a flight-to-liquidity than a flight-to-quality. In this section, we test this hypothesis by examining how FTS events affect returns on assets with different quality and liquidity characteristics in the US corporate bond market (Section 4.4.1) and international equity markets (Section 4.4.2).

4.4.1 FTS and the Cross Section of Corporate Bonds

It is generally difficult to differentiate “quality” from “liquidity,” as the two characteristics tend to be highly correlated. However, the corporate bond market provides an ideal laboratory because the credit rating of a bond is a good indicator of its “quality,” whereas within the same rating category, large variations in bond liquidity remain. We obtain estimates of returns and transaction costs on credit quality- and liquidity-sorted US corporate bond portfolios from Bongaerts et al. (2017). They use transaction-level data from the enhanced TRACE (Trade Reporting and Compliance Engine)

¹⁵For example, based on data reported in the 2018 ICI Fact Book (https://www.ici.org/pdf/2018_factbook.pdf, Table 60), retail investors hold about 92% of all equity mutual funds, 90% of bond mutual funds, and 62% of money market mutual funds as of 2017.

database from July 2002 up to the end of 2013, a period that witnesses many FTS events. Each quarter, they form portfolios by sorting bonds first into five credit quality categories and then into two liquidity categories, where credit quality is measured by either a bond’s S&P credit rating or its Expected Default Frequency (EDF) as reported by Moody’s KMV, and liquidity is measured by amount issued, age, or trading activity. They then estimate returns and transaction costs for each portfolio using the repeat-sales approach of Edwards et al. (2007). Bongaerts et al. (2017) show that the variation in the transaction costs across bonds is best explained by the “amount issued” characteristic; we therefore use “amount issued” as our liquidity measure. For credit quality, we focus on the EDF proxy, but show additional results using the credit ratings proxy in the Online Appendix.

The third column of Table 9 reports the average transaction cost, measured by the average effective percentage bid-ask half-spread, for portfolios from all five credit quality (EDF) quintiles and, within each EDF quintile, the top and bottom liquidity (“amount issued”) buckets. Transaction costs monotonically increase from around 30 to 80 bps as default risk increases. Within each default risk quintile, the differences in transaction costs between low and high liquidity portfolios vary between 10 and 23 bps, tend to be slightly higher for lower credit quality bonds, and are invariably statistically significant at the 1% level. There is a clear positive correlation between liquidity and credit quality, with transaction costs increasing as default risk increases. Nonetheless, the variation in transaction costs is more notable across liquidity buckets than across credit quality quintiles; for example, the more liquid bonds in the second best credit quality quintile enjoy lower average transaction costs (33 bps) than the less liquid bonds in the best credit quality quintile (37 bps), as is the case for all other adjacent EDF categories.

To assess the FTS exposure of each portfolio, we run the following regressions:

$$r_{c,l,t} = \alpha_{c,l} + \beta_{c,l}^{TB} r_{tb,t} + \beta_{c,l}^{EQ} r_{eq,t} + \gamma_{c,l} FTS_t + \varepsilon_{c,l,t} \quad (15)$$

with $r_{c,l,t}$ denoting the weekly return on a portfolio consisting of corporate bonds belonging to credit quality quintile c and liquidity bucket l , and FTS_t representing the percentage of FTS days within the week. We control for returns on two benchmark portfolios, a duration-matched Treasury portfolio ($r_{tb,t}$) and the aggregate US equity market ($r_{eq,t}$).

Table 9 reports each portfolio’s exposure to FTS and to the two benchmark portfolios. Cor-

porate bonds with higher credit quality have higher Treasury market exposures and lower equity market exposures. The FTS exposure, γ , is negative for all portfolios and significantly so with one exception. Even bonds with the highest credit quality (bottom EDF quintile) have FTS betas close to -50 bps. Nonetheless, these bonds benefit from a large positive exposure to Treasuries and a low, albeit still positive, exposure to equities, resulting in an overall return on FTS days that is slightly positive (final column of Table 9).¹⁶ The FTS exposure increases monotonically with default risk, reaching -2.49% for bonds in the highest EDF quintile. The difference in FTS betas across credit quality quintiles is statistically significant: as shown in the second to last row of Table 9, we can decisively reject the null hypothesis that, within the same liquidity bucket, bonds in the first and fifth credit quality quintiles have equal FTS exposures. Moreover, bonds with the lowest credit quality also suffer from the lowest Treasury betas and the highest equity betas, resulting in significantly negative overall returns on FTS days.

In contrast, we find little evidence of a flight to liquidity during FTS events. As shown in the last row of Table 9, we cannot reject the hypothesis that the FTS exposure is the same across the two liquidity buckets within each credit quality class. Our results are robust to including the lagged benchmark return and allowing for a lagged response to a FTS (last two columns of Table 9). We therefore conclude that, at least in the US corporate bond market, a FTS event appears to represent more a flight to quality than a flight to liquidity.

4.4.2 FTS and the Cross Section of Equities

We now turn to the equity market. While quality is not as easily defined for equities as for corporate bonds, most studies use one or more variables that capture firm profitability, safety, and earnings quality (see e.g. Graham (1973), Piotroski (2000), Novy-Marx (2013), Asness et al. (2018)).

We proceed in four steps. First, we collect daily returns on all stocks listed in 22 developed markets (excluding the US) over the period 1982-2012. We only include common stocks that are traded on the main stock exchange and covered by WorldScope. To avoid survivorship bias, we include both active and inactive stocks. Second, for each stock, we calculate five quality indicators: the total leverage, the Altman z-score¹⁷, two measures of profitability—the ratio of gross profits

¹⁶In the Online Appendix, we show that this is not true for top rated corporate bonds, which provide no hedge against FTS at all. However, that analysis does not include AAA bonds due to their insufficient number.

¹⁷We calculate the Altman Z-Score as $1.2x(\text{working capital} / \text{total assets}) + 1.4x(\text{retained earnings} / \text{total assets})$

to total assets and the return on equity, and earnings quality, measured as the five-year volatility in earnings growth. For each indicator for each country, we sort the stocks into five quintiles and assign a score of 1 (5) to the quintile representing the highest (lowest) credit quality. We then calculate an aggregate quality indicator for each stock by summing up the five individual quality scores. Third, for each stock, we measure its liquidity as the percentage of days with non-zero returns in the previous year (see Lesmond et al. (1999) and Bekaert et al. (2007)). Finally, for each country, we create nine double sorted portfolios sorted first on aggregate quality and then on liquidity using 30-40-30 percentile breakpoints. We rebalance yearly at the end of June, using the liquidity measure calculated over the previous year and the aggregate quality indicator calculated at the end of the previous year. The Online Appendix provides more detail on the sample (which contains 7,504 firms), and confirms that “quality” and “liquidity” are priced characteristics.

The first column of Table 10 reports the average percentage of non-zero daily returns within a year for the quality and liquidity double sorted portfolios. Over the full sample, irrespective of quality, stocks in the top liquidity tercile trade around 90% of days, compared to around 55% for the bottom liquidity tercile. In contrast to the corporate bond market, the correlation between “quality” and “liquidity” appears low in the equity market, as stocks in the same liquidity group but different quality bucket trade at similar frequencies.

To measure the impact of FTS on those portfolios, we run the following panel regression:

$$r_{c,l,q,t} = \alpha_{c,l,q,t} + \beta_{c,l,q,t}^{G,0} r_{global,t} + \beta_{c,l,q,t}^{G,1} r_{global,t-1} + \beta_{c,l,q,t}^{L,0} r_{local,t} + \beta_{c,l,q,t}^{L,1} r_{local,t-1} + \gamma_{l,q} FTS_t + \varepsilon_{c,l,q,t}$$

with $r_{c,l,q,t}$ and $\alpha_{c,l,q,t}$ denoting the return and alpha on a portfolio of stocks from country c in quality tercile q and liquidity tercile l . We control for global and local benchmark returns, including a lag for both to account for non-synchronous trading hours and allowing the less liquid firms to respond with a delay to market shocks from the previous day. While intercepts and betas vary both across characteristics and countries, we impose the FTS exposure $\gamma_{l,q}$ to be constant across countries. Significance levels are based on standard errors clustered across time.

The results are reported in Table 10. First, there is a flight-to-quality effect in the equity market for the more liquid stocks. Outside the least liquid segment, the FTS exposure of equity portfolios

+ 3.3x(earnings before interest and tax / total assets) + 0.6x(market value of equity / total liabilities) + 1.0x(sales / total assets).

rises with quality, with the highest quality portfolio posting on average a 19 basis point higher return on FTS days than the lowest quality portfolios in the top liquidity tercile, after taking into account their respective benchmark portfolios. A joint test of equal FTS exposures between the top and bottom quality tercile within the same liquidity segment rejects at the 1% level. Second, unlike the corporate bond market, there is evidence of a flight-to-liquidity during FTS. Within each quality tercile, the lowest liquidity portfolios exhibit significantly negative FTS exposures, suggesting that they decline much more on FTS days than what can be explained by their benchmark exposures; in contrast, the most liquid stocks exhibit less negative or even positive FTS exposures. A joint test of equal FTS exposures across liquidity buckets but within the same quality tercile also rejects at the 1% level. The difference ranges from 12 bps for the low quality tercile to 30 bps for the top quality tercile¹⁸. Note that this does not imply that highly liquid stocks perform better than illiquid stocks in a FTS event, because more liquid stocks tend to have higher market exposures. In fact, the final column of Table 10 shows that without adjusting for the benchmark risks, the 30% most liquid stocks underperform the 30% least liquid ones by between 79 and 96 bps on FTS days. Taken together, stocks in the top quality, most liquid bucket have a FTS beta that is 31 bps above those in the bottom quality, least liquid bucket, a difference that is significant at the 1% level.

We also perform the sorting in reverse order, first on liquidity and then on quality. The results are very similar and are shown in the Online Appendix.

5 FTS Events around the World

In this section, we analyze the global ramifications of FTS events. Section 5.1 proposes a few possible definitions of a global FTS, and discusses the estimated FTS incidence. Sections 5.2 and 5.3 show the sensitivity of emerging market equity and bond returns, respectively, to those global FTS events. While emerging markets have witnessed numerous severe financial crises, defining FTS events using data on emerging markets alone is a challenge. During much of our sample period, local government bond markets in those economies were not well developed and are dominated by sovereign bonds issued in dollars. These sovereign bonds cannot function as a “safe asset” for

¹⁸A similar case of illiquid assets serving as safe assets can be found in Badarizna and Ramadorai (2018), who show that houses in developed markets (London in particular) act as “safe assets” to insure against political risk in emerging markets despite their illiquidity.

these emerging markets due to default and exchange rate risks, and we show below that indeed they behave like risky securities. There is a growing literature on global safe assets (see Caballero et al. (2017) for a recent overview) which often suggests that US bonds act as the global safe asset, but the presence of currency risk makes this conjecture problematic. In addition, many emerging markets imposed capital controls during parts of or throughout our sample period. We therefore restrict our goal to characterizing the FTS sensitivity of emerging equity and bond markets to global FTS events, and analyze how such sensitivity depends on the *de jure* degree of integration of these markets. We stop short of analyzing the source of this sensitivity, which may or may not be accompanied by international capital flows.¹⁹

5.1 Defining Global FTS Events

We consider three definitions of a global FTS event. First, using our country-by-country aggregate FTS indicators, we can define global FTS as days on which at least 50% of the countries experience a FTS. Second, we apply our models to global equity and bond returns, where the global equity return is proxied by returns on the MSCI World index and the global bond return is proxied by returns on a portfolio of government bonds from countries that maintained a AAA rating over the entire sample - the US, Germany, Switzerland, Netherlands, Austria, Finland, and Norway - weighted according to the size of their equity markets. Finally, we also use the US FTS as a proxy for the global FTS, on the argument that a FTS in the world's largest economy will likely have spillover effects on emerging markets.

Figure 5 plots the percentage of countries in a FTS according to our benchmark model (top panel), the aggregate probability of a global FTS from the global model (middle panel), and the aggregate FTS probability for the US (bottom panel). A horizontal line at 50% probability is shown in all panels, representing the requirement that a global FTS occurs when at least half of the countries are in a FTS (top panel), or the 50% threshold probability level we require for a day to be denoted a FTS (the middle and bottom panels). There is significant overlap across the definitions, with all well-known global crises identified as global FTS days by all three measures. The first definition leads to the fewest number of global FTS, with a FTS incidence of only 0.80%,

¹⁹One example of the former is Jotikasthira et al. (2012), who show that investor flows in global funds cause portfolio re-allocations, generating strong price effects in emerging markets.

compared with 2.36% using a global-model-based measure and 2.62% using the US FTS indicator. The average return impact on FTS days is the smallest under the first definition and largest using the US FTS indicator.

5.2 Global FTS and Emerging Equity Markets

We use daily data for 25 emerging equity markets from various regions—Bulgaria, Hungary, Romania, Russia, Slovenia, Turkey from Central East Europe; Israel; South Africa; Argentina, Brazil, Chile, Colombia, Mexico, and Peru from Latin America; and China, India, Hong Kong, Indonesia, Korea, Malaysia, Pakistan, Philippines, Singapore, Sri Lanka, and Thailand from Asia. While Hong Kong and Singapore are in fact developed markets, we retain them in the sample as they are not part of our main sample. Returns are computed in dollar terms but are relevant for both US and local investors because the dollar changes on FTS days are negligible relative to equity movements. This also makes the results on equities more comparable to those on bonds which also trade in dollars. For all markets except those in Eastern Europe, the sample starts in the early 1990s. Bulgaria has the latest starting date in March 2000.

An important consideration in this analysis is the degree of *de jure* integration of these markets, which affects the risk models investors use and may also affect the incidence of FTS events. To measure de jure integration, we use the [0,1] indices compiled by Fernandez et al. (2015) using IMF data and extended by Bekaert et al. (2016) to an earlier sample period. These indices, denoted by $FI_{i,t}$ and available annually, use restrictions specifically focused on equity markets.²⁰ The financial integration indices typically increase over time, signaling higher integration (see the Online Appendix for details), but are constant at zero (one) for China (Bulgaria, Peru and Hong Kong).

When considering the effect of FTS events, it is important to control for the typical response of emerging market equities to global equity markets, which may differ across jurisdictions due to different degrees of integration. We therefore consider the following panel model:

$$r_{i,t} = (c_{i,0} + c_1 FI_{i,t}) + (\beta_{i,0} + \beta_1 FI_{i,t}) r_{be,t} + (\gamma_{i,0} + \gamma_1 FI_{i,t}) FTS_{be,t} + \varepsilon_{i,t} \quad (16)$$

where $r_{i,t}$ denotes the equity market return (in dollar) in country i on day t and $c_{i,0}$ the country-

²⁰This index is calculated as one minus the fraction of restrictions in place on international security transactions.

specific intercept. $r_{be,t}$ and $FTS_{be,t}$ represent the time- t benchmark return and FTS indicator, respectively, that depend on the global FTS definition in consideration. The benchmark return is the global equity market return under the first two global FTS definitions and the US equity market under the third definition. We estimate the model as a panel because the limited time variation in financial integration for some countries requires us to assume β_1 and γ_1 to be pooled across countries. In estimating the model, we also take into account asynchronous trading hours. In particular, for European, African, and Middle Eastern markets, we include both contemporaneous and one-day-lagged benchmark returns and FTS indicators in the regression. The tables report the sums of contemporaneous and lagged coefficients and the associated standard errors. We only include the contemporaneous returns and FTS indicators for Latin American markets, and only one-day-lagged benchmark returns and FTS indicators for Asian markets.

Panel A of Table 11 summarizes the results, with country-by-country results reported in the Online Appendix. The average exposure of emerging equity markets to benchmark returns is estimated to be 0.26-0.28 using the two global market benchmarks and 0.13 using the US market benchmark, with higher exposures for more integrated equity markets. The effect is not only statistically but also economically significant, as a move from zero to full integration increases an emerging market's global market beta by about 0.40. On FTS days, emerging equity market returns decline more than justified by their benchmark exposures. The average FTS impact is the most negative (-2.46%, with an IQR of -1.79% to -2.96%) when the global FTS is identified as one with at least half the countries in a FTS, and the least negative (-0.97%, with an IQR of -0.74% to -1.24%) when the global FTS is identified by applying our methodology to global equity and bond returns. The FTS effect is less negative for more integrated economies, with γ_1 ranging from 0.0057 to 0.0147 and statistically significant at the 1% level for all three definitions. On FTS days, more integrated emerging equity markets benefit from less negative FTS exposures but at the same time suffer from more positive benchmark exposures; this suggests that, during FTS episodes, investors treat integrated and segmented emerging equity markets similarly as one asset class, leading to indiscriminate declines across those markets.

While all these results are computed in US dollars, we have verified that the bulk of the effect comes from declining local equity markets with less than 20% of the total effect coming from depreciating emerging market currencies.

5.3 Global FTS and Emerging Bond Markets

Our analysis of emerging market bonds covers the same set of countries as for emerging equity markets, except for Slovenia for which no bond market data is found. For Israel, Hong Kong, Korea, and Singapore, we use JP Morgan’s Emerging Local Markets Index, which contains securities denominated in each country’s local currency with a relatively short duration; for all other countries, we use JP Morgan’s Emerging Markets Bond Index (EMBI) data, consisting of US dollar-denominated Brady bonds. We use the de jure bond market integration indices compiled by Fernandez et al. (2015) (and extended by Bekaert et al. (2016)) using restrictions for bond markets only. We adjust the FTS regression (16) to include both bond and equity benchmarks. Several papers (e.g. Longstaff et al. (2011), Bekaert et al. (2014b)) suggest that global factors affect the pricing of emerging market sovereign bonds.

Panel B of Table 11 shows the average benchmark bond market beta to be 0.17-0.25 and the average equity market beta to be 0.20-0.27, depending on the definition of global FTS used. The benchmark bond market betas tend to increase with bond market integration ($\beta_1(bo) = 0.08$, which is significant at the 5% level), while equity market betas show no such correlations. We also find on average negative FTS betas that range from -0.12% (IQR of -0.39% to 0.17%) using the “50% countries in FTS rule” to -0.24% (IQR of -0.32% to -0.14%) using the US FTS indicator, although the estimates are significant (at the 5% level) in no more than 7 of the 24 countries. Contrary to the equity markets, we find the FTS exposure to decrease with bond market integration, but the effect is never statistically significant. We conclude that emerging market bonds behave about in line with typical risky asset classes during a global FTS, while emerging market equities are exposed to global FTS risks beyond their exposures to standard benchmark risks.

6 Hedging against FTS

A FTS moves equities and bonds in opposite directions; diversification using these two major asset classes may therefore provide a good way of limiting the losses during stress times. This thinking is reflected in the fact that a 60% equity - 40% bond portfolio is often used as the benchmark in institutional asset management. It is also a common belief that additional benefits can be obtained from diversifying away from the standard equity and bond asset classes into alternative investment

vehicles and asset classes such as private equity, hedge funds and natural resources. Some high-profile university endowments in the US reportedly follow this strategy, which is dubbed by some as the “endowment model” (see Swensen (2009)). In Section 6.1, we examine whether proxies to the endowment portfolios provide hedges against FTS. In addition, one specific investment vehicle, hedge funds, should in theory provide at least a partial protection against market downturns. Those funds can go long or short and can invest in a wide array of securities and derivative products, which could potentially provide positive returns in all market environments. In fact, the name “hedge funds” suggests that, in the mind of many investors, they may “hedge” against bad times. But do they? Section 6.2 tries to answer this question.

6.1 The Endowment Model

The endowment model seeks to enhance diversification by investing in different geographic regions (mostly international and emerging market equities), alternative asset classes (e.g., commodities, real estate), and alternative investment vehicles (e.g., private equity and hedge funds). Ang et al. (2018) report that US university and college endowments now hold close to one-third of their portfolios in private equity and hedge funds. Testing whether the endowment model works in practice during FTS events requires data on those funds’ actual returns, which is beyond the scope of this article. However, we collected proxies for the various asset classes used by endowment funds, as well as data on their target or actual asset allocations. With the rapid growth of alternative and “smart beta” ETFs, retail investors can now mimic the endowment model. We measure the FTS sensitivity of the various asset classes in the endowment model using a daily regression:

$$r_{t,i} = \alpha + \beta_i FTS_t + \gamma_i Ctrl_t + \varepsilon_{t,i} \quad (17)$$

where $r_{t,i}$ is the return on asset class i on day t , FTS is our FTS dummy, and the variable $Ctrl$ is a vector of control variables that may differ across regressions.

The alternative asset classes we consider include natural resources (S&P GSCI energy index), commodities (S&P GSCI benchmark total commodity index), hedge funds (HFRX global hedge fund index), absolute return hedge funds (HFRX absolute return index), real estate (a REITS index from Datastream), and global private equity in local currency (S&P listed private equity). Those asset classes show relatively low correlation (see Online Appendix), confirming their potential value

for portfolio diversification. For all asset classes, we control for their exposures to the domestic equity market. For private equity and non-benchmark fixed income asset classes, we also control for their exposures to the domestic government bond market.

Table 12 reports the results using daily dollar returns over the period 2004-2015.²¹ All asset classes show significantly positive equity exposures; the bond market exposure is significantly negative for private equity, reflecting its leverage component, and significantly positive for foreign and inflation-linked bonds. After controlling for the benchmark risks, real estate, natural resources and commodities show significantly positive FTS betas, suggesting that those asset classes do indeed provide some FTS insurance. The hedge fund indices and high-yield bonds have significantly negative FTS betas, while global equities (either world excl. US or emerging markets) have negative yet insignificant FTS betas, suggesting those asset classes lose value more than justified by their benchmark exposures during FTS episodes²².

We track the annual portfolio allocations of all endowments in Nacubo combined and the Harvard and Yale endowments, the two largest and best known endowment funds over 2004-2015. We obtain actual allocations for Nacubo and Yale but only target allocations for Harvard. Table 13 (Panel A) shows some snapshots of their asset allocations. Both Harvard and Yale have more real assets than the average endowment, and Yale's well-known strategy of overweighting private equity and underweighting listed domestic equity is also visible from the table. Nevertheless, the returns on the three endowment portfolios, calculated using the allocations and the proxies shown in Table 12, are highly correlated with correlations exceeding 90% (see the Online Appendix).

Panel B repeats regression (17) for the three endowment funds returns using different control variables. On average, the values of those portfolios go down between 91 bps (Harvard) and 1.42% (Yale) more on FTS days than on other days. Once we control for domestic equity exposures, all portfolios have positive FTS exposures, which are only significant (at the 10% level) for the Harvard portfolio. This may simply reflect the performance of the fixed income portion of their portfolio. In fact, an often-used benchmark for endowment portfolios contains 60% equities and 40% bonds. Indeed, all three endowment portfolios have betas not too far from one with respect to such a

²¹While our asset allocation weights go back to 2002 for Nacubo and even further for the Harvard and Yale endowments, the HFRX Absolute Return Index starts only on July 1, 2004.

²²In the Online Appendix, we report the same table showing Dimson (1979) betas with one lag. The results are largely similar, with FTS betas of the absolute return hedge fund index and high-yield bonds also becoming significantly negative though remaining economically small.

benchmark, with Yale showing the highest beta. The FTS betas now become significantly negative for all three portfolios, with Harvard’s FTS beta the least negative or significant²³. We conclude that most endowment funds remained exposed to FTS risks. Of course, it is conceivable that the actual portfolios of endowments perform better than the tracking portfolios we constructed using various indices that are not actively managed.

6.2 Hedge Funds

In this section, we examine how well hedge funds do during times of market stress, as measured by our FTS indicator. We obtain daily returns (in US Dollars) on various Hedge Fund Research (HFR) indices over the period of March 2003 to July 2015. The indices include the overall index (“Global Hedge fund”) and 11 different categories such as “Convertible Arbitrage,” “Global Macro” and “Absolute Return.” We describe the various categories in more detail in the data appendix, and report summary statistics on the returns in the Online Appendix. While these hedge fund indices show overall positive returns, with the exception of Convertible Arbitrage and Equity Market Neutral, and subdued volatilities of only 2.5 to 6.5% annualized, their returns on FTS days are invariably negative, ranging from -0.025% for equity market neutral funds to -0.624% for equity hedge funds.

It is well known that most hedge fund styles have positive market exposures (for example, see Asness et al. (2001) and Patton (2009) for market neutral funds). Therefore, we run our usual regression, regressing daily hedge fund returns on the US FTS indicator and control for market risk using the US equity market return. To prevent FTS events from contaminating the factor beta estimates, we also consider two abnormal return models. The first model is

$$r_{i,t} = \alpha_i + \beta'_i F_t + \varepsilon_{i,t}$$

where $r_{i,t}$ is the return on hedge fund index i , F_t represent the risk factors under consideration, and β'_i is a vector of exposures of hedge fund index i with respect to the risk factors F_t . The model is estimated using only data on non-FTS days. Abnormal returns on FTS days are computed as

$$AR_{i,t} = r_{i,t} - \hat{\alpha}_i - \hat{\beta}'_i F_t$$

with t now indicating FTS days. We then conduct a simple t -test on the average abnormal returns,

²³The results are unchanged when a lagged Dimson beta is included (see the Online Appendix).

which constitute an alternative estimate of the FTS beta. In the second model, α and β are estimated over a window of 250 days before the FTS event; hence, this model allows the α and β estimates to be different for each FTS event. FTS days within the window are excluded when estimating the model.

Column (3) of Table 14 reports estimates of the market exposures for the standard specification. Most hedge fund categories have significantly positive systematic exposures, suggesting poor performance during market downturns. The exceptions include Convertible Arbitrage, which shows significantly negative exposure, and Distressed Securities, Equity Market Neutral, and Global Macro, which have effectively zero exposures. After controlling for market risks, the estimated FTS betas reported in Column (4) are negative for all categories and, with the sole exception of Equity Market Neutral, significant at the 10% level or below. The estimated FTS betas do not differ much between the standard regression (shown in Column (4)), and the abnormal return models (shown in Columns (6)-(7)), although the FTS betas for Equity Market Neutral, Global Macro, and Absolute Return become insignificant in the abnormal return model with rolling betas.

We consider four additional robustness checks of the benchmark regressions. First, Asness et al. (2001) claim that the systematic exposure of hedge funds increases substantially when lagged exposures are accounted for. In column (8) of Table 14, we report the FTS exposures using the contemporaneous and two lags of US equity market returns as systematic risk controls.²⁴ The results are remarkably robust with the FTS betas and their significance barely affected. Second, when using a richer risk model with the seven factors as in Fung and Hsieh (2004) and additionally including an Emerging Markets factor, our results, again, remain robust (see Online Appendix). Third, we redo all our specifications using the global equity return instead of the US equity return to control for systematic risks. The R^2 s rise in a few cases, but most other results remain unchanged. The FTS betas are estimated to be negative and statistically significant for most categories, with a few cases of insignificant betas found for Convertible Arbitrage, Distressed Securities and Equity Market Neutral.

Last but not the least, Patton and Ramadorai (2013) study the changing market exposure of individual hedge funds within the month by interacting them with instruments available at the

²⁴We also examined models with one and four lags, and applied this methodology to the abnormal return framework as well. The results are invariably robust (see Online Appendix).

daily frequency. They find strong evidence of time-varying market exposures, some deterministic and some in response to market conditions. For example, they find that the market exposures of hedge funds may abruptly change in response to lower stock returns, higher stock volatility, or elevated TED spreads. This suggests that hedge funds may provide hedges against market stress by lowering their exposure to the risk factors ahead of a FTS. We can only test this at the fund category level as we do not have data on individual hedge fund returns, but our data on daily returns allows us to directly test whether hedge funds change their exposure ahead of a FTS.

We consider a model where the exposure of the hedge fund index with respect to the risk factors depend on the time (in days) relative to the FTS event, denoted by ζ :

$$r_{i,t} = \alpha_i + \beta'_i(\zeta) F_t + \varepsilon_{i,t}.$$

Our most general specification for $\beta'_i(\zeta)$ is a third-order polynomial function:

$$\beta'_i(\zeta) = \beta'_{i0} + \beta'_{i1} \ln(\bar{\zeta}) + \beta'_{i2} \ln(\bar{\zeta})^2 + \beta'_{i3} \ln(\bar{\zeta})^3 + \beta'_{i4} D_1 + \beta'_{i5} D_2 \quad (18)$$

where D_1 is a dummy variable that equals one on the last day before a FTS event and D_2 a dummy variable that equals one on each of the last 5 business days before a FTS event. In the third-order polynomial specification, we set $\bar{\zeta} = \zeta$ for $\zeta < 250$ and $\bar{\zeta} = 250$ for $\zeta \geq 250$. The baseline model does not include lags of F_t . We also consider models including 1, 2 and 4 lags of F_t , where the lagged exposures are assumed to be proportional to $\beta'_i(\zeta)$. The Online Appendix provides details on the estimation results of the most general model as well as a more restricted version. As a summary, we find that the two dummy variables are never statistically significant, suggesting the polynomial function is flexible enough to capture changes in risk exposure, even near a FTS event. The dummy variables are therefore excluded from the preferred model. For 3 hedge fund categories (Convertible Arbitrage, Merger Arbitrage and Relative Value), the polynomial coefficients are jointly and/or individually all statistically insignificant and we put them equal to zero in the preferred model.

We find that the time variations in the risk exposures are remarkably similar across fund categories with non-constant exposures. We therefore show the pattern only for the overall hedge fund index in Figure 6, relegating detailed results for individual categories and different specifications to the Online Appendix. Systematic exposures are relatively small at around 0.10 one year before a FTS,

but increase steadily to about 0.25 around 50 days before a FTS event. The market exposure then decreases rather quickly to levels below that witnessed a year earlier just before the FTS event, before rising slightly into the event. This pattern is seen for all fund categories with significant polynomial coefficients with varying magnitudes. Because of the parametric nature of the beta function, we can analyze the observed pattern mathematically. Focusing on the model without lags, we define ζ_1 and ζ_2 as the distance to FTS that reaches the largest and the smallest beta, respectively. The last two columns of Table 14 report the estimates. The maximum beta occurs in general between 78 and 52 days before a FTS event, and 63 days before for the overall index. The minimum occurs a few days before a FTS event, varying between 3 (for most categories) and 7 (Equity Market Neutral) days. This table shows numerically that the pattern of Figure 6 is valid for all hedge fund categories. We can also test whether these changes in systematic exposure are statistically significant. Columns (10) and (11) of Table 14 show that both the increase in market exposures from 250 days before a FTS event to day ζ_1 and the decreases in market exposures between day ζ_1 and the day before a FTS are statistically significant and economically large (varying between 0.08 and 0.18).

In summary, similar to Patton and Ramadorai (2013), we find significant changes in hedge fund exposures, but the pattern is intricate. Hedge funds appear to slowly increase their systematic exposures before a FTS event occurs, likely during periods when markets are relatively calm, but rapidly reduce their market exposure a few months before a FTS event. Interestingly, once we allow for time variations in market exposure using the polynomial specification, the estimated FTS betas (Column (9) of Table 14) become significantly negative for all hedge fund categories.

We conclude that hedge funds do not hedge against FTS events. That said, we do find that about half of the fund categories and the overall index generate positive and statistically significant alphas, which remains true under the Fung-Hsieh model to control for risk. There is, in fact, extensive research on the relationship between the average performance of a fund on the one hand, and the R^2 with respect to various systematic exposures (Titman and Tiu, 2011), the probability of fund failure (Bollen, 2013), the dynamic risk management ability of hedge fund managers (Namvar et al. (2016)), and insurance value against high tail risk episodes (Jiang and Kelly, 2012) or “bad times” (Cao et al., 2014), on the other hand. Those papers all use individual hedge fund returns and it is therefore difficult to compare our results with theirs. At the fund category level, there does not seem

to be a strong link between low R^2 s and alphas; for example, Event Driven and Merger Arbitrage have both the highest R^2 s and the highest alphas. Moreover, all hedge fund categories fare poorly during FTS episodes, regardless of their alpha. Of course, it is also conceivable that the broad categories might mask individual hedge fund effects, with some high quality funds indeed providing hedges against FTS events. One economic factor that could lead to differential performance of hedge funds in crisis times is liquidity. For example, Boyson et al. (2010) suggest that hedge funds may experience contagion effects in response to large adverse shocks to asset and hedge fund liquidity; Sadka (2012) shows that liquidity risk is an important factor in explaining the cross-section of hedge fund returns; and Cao et al. (2013) document that hedge funds tune their market exposures with respect to liquidity conditions. We defer further analysis of these issues to future work.

7 Conclusion

We define a FTS event as a day on which bond returns are positive, equity returns are negative, the stock-bond return correlation is negative, and there is market stress as reflected in elevated equity return volatility. Using daily data on only equity and bond returns, we identify FTS episodes in 23 countries. To do so, we develop a new RS model for bond and stock returns that embeds the FTS characteristics described above. The model delivers relatively persistent FTS spells, accompanied by steep increases in equity risk premiums and more modest decreases in bond risk premiums, high conditional equity return volatility, and very negative conditional bond-stock return correlations. We combine the FTS measure delivered by this model with the FTS measures implied by two alternative models to generate conservative FTS estimates.

On average, FTS episodes comprise less than 2% of the sample, and when they occur, bond returns exceed equity returns by about 2.72% on average. FTS spells are short-lived, rarely exceeding 4 days and never longer than 10 days. Alternative market stress indicators such as consumer sentiment indices, implied stock market volatility, and safe haven currencies (the Yen and the Swiss Franc) move as expected on FTS days. For the US, we document that FTS are accompanied by outflows from equity mutual funds and inflows into Treasury bond and money market funds. This may suggest that retail investors, which are the dominant investors in such funds, forego the high relative risk premiums to be earned on such days. Also, using corporate bonds stratified over

“quality” and “liquidity,” we show that the FTS effect represents more a flight to quality than a flight to liquidity. However, international equity data stratified across quality and liquidity lines show FTS events to adversely affect both low-liquidity and low-quality stocks, with high-quality or high-liquid stock portfolios featuring positive FTS betas. Alternative asset classes do not fully help hedge against FTS, and we find the FTS exposure of portfolios following the “endowment model” (the average endowment as well as those of Yale and Harvard) to be negative once we control for exposure to the standard 60% equities; 40% bonds benchmark portfolio. Hedge funds overall and almost all hedge fund styles we examine do not hedge against FTS events either, but we document an intricate pattern of changes in the systematic risk exposure of hedge funds preceding a FTS. It would be interesting to further examine the FTS exposures of individual hedge funds.

We hope that our results will provide useful inputs to theorists positing theories regarding the origin and dynamics of FTS, and to asset pricers attempting to uncover major tail events that may drive differences in expected returns across different assets or asset classes. Those results may also inspire portfolio and risk managers to look for portfolio strategies that may help insure against FTS events, especially since we show that standard hedge fund strategies do not provide such an insurance. Preliminary computations suggest that such strategies would involve quite large bond allocations.

References

- Acharya, Viral V., Lasse H. Pedersen, Thomas Philippon, and Matthew Richards, 2017, Measuring systemic risk, *Review of Financial Studies* 30, 2–47.
- Adrian, Tobias, and Markus K. Brunnermeier, 2016, CoVar, *American Economic Review* 106, 1705–1741.
- Aikman, David, Michael Kiley, Seung Jung Lee, Michael G. Palumbo, and Missaka Warusawitharana, 2017, Mapping heat in the U.S. financial system, *Journal of Banking & Finance* 81, 36 – 64.
- Ait-Sahalia, Yacine, Mustafa Karaman, and Loriano Mancini, 2018, The term structure of variance swaps and risk premia, *Swiss Finance Institute Research Paper* No. 18-37.
- Allen, Linda, Turan G. Bali, and Yi Tang, 2012, Does systemic risk in the financial sector predict future economic downturns?, *Review of Financial Studies* 25, 3000–3036.
- Ang, Andrew, Andrés Ayala, and William N Goetzmann, 2018, Investment beliefs of endowments, *European Financial Management* 24, 3–33.
- Ang, Andrew, and Geert Bekaert, 2002, International asset allocation with regime shifts, *Review of Financial Studies* 15, 1137–1187.
- Asness, Clifford, Robert Krail, and John Liew, 2001, Do hedge funds hedge?, *Journal of Portfolio Management* 28, 6–19.
- Asness, Clifford S, Andrea Frazzini, and Lasse Heje Pedersen, 2018, Quality minus junk, *Review of Accounting Studies* <https://doi.org/10.1007/s11142-018-9470-2>.
- Badarinza, Cristian, and Tarun Ramadorai, 2018, Home away from home? Foreign demand and London house prices, *Journal of Financial Economics* 130, 532–555.
- Bae, K. H., G. A. Karolyi, and R. M. Stulz, 2003, A new approach to measuring financial contagion, *Review of Financial Studies* 16, 717–763.
- Baele, Lieven, Geert Bekaert, and Koen Inghelbrecht, 2010, The determinants of stock and bond return comovements, *Review of Financial Studies* 23, 2374–2428.
- Baker, Malcolm, and Jeffrey Wurgler, 2006, Investor sentiment and the cross-section of stock returns, *Journal of Finance* 61, 1645–1680.
- Bansal, Naresh, Robert A. Connolly, and Christopher T. Stivers, 2010, Regime-switching in stock index and Treasury futures returns and measures of stock market stress, *Journal of Futures Markets* 30, 753–779.

- Barsky, Robert B., 1989, Why don't the prices of stocks and bonds move together, *American Economic Review* 79, 1132–1145.
- Baur, Dirk G., and Brian M. Lucey, 2009, Flights and contagion - An empirical analysis of stock-bond correlations, *Journal of Financial Stability* 5, 339–352.
- Baur, Dirk G., and Thomas K. McDermott, 2010, Is gold a safe haven? International evidence, *Journal of Banking & Finance* 34, 1886–1898.
- Beber, A., M. W. Brandt, and J. Cen, 2014, Switching risk-off: Fx correlations and risk premia, *Working Paper* Cass Business School.
- Beber, Alessandro, Michael W. Brandt, and Kenneth A. Kavajecz, 2009, Flight-to-quality or flight-to-liquidity? evidence from the euro-area bond market, *Review of Financial Studies* 22, 925–957.
- Bekaert, Geert, Michael Ehrmann, Marcel Fratzscher, and Arnaud Mehl, 2014a, The global crisis and equity market contagion, *Journal of Finance* 69, 2597–2649.
- Bekaert, Geert, Eric Engstrom, and Yuhang Xing, 2009, Risk, uncertainty, and asset prices, *Journal of Financial Economics* 91, 59–82.
- Bekaert, Geert, Campbell Harvey, Christian Lundblad, and Stephan Siegel, 2014b, Political risk spreads, *Journal of International Business Studies* 45, 471–493.
- Bekaert, Geert, Campbell R. Harvey, Andrea Kiguel, and Xiaozheng Wang, 2016, Globalization and asset returns, *Annual Review of Financial Economics* 8, 221–288.
- Bekaert, Geert, Campbell R. Harvey, and Christian Lundblad, 2007, Liquidity and expected returns: Lessons from emerging markets, *Review of Financial Studies* 20, 1783–1831.
- Bekaert, Geert, Robert J. Hodrick, and David Marshall, 2001, Peso problem explanations for term structure anomalies, *Journal of Monetary Economics* 48, 241–270.
- Bekaert, Geert, and Marie Hoerova, 2014, The VIX, the variance premium and stock market volatility, *Journal of Econometrics* 183, 181–192.
- Bekaert, Geert, and Marie Hoerova, 2016, What do asset prices have to say about risk and uncertainty?, *Journal of Banking and Finance* 67, 103–118.
- Bloom, Nicholas, 2009, The impact of uncertainty shocks, *Econometrica* 77, 623–685.
- Bollen, N. P., 2013, Zero- R^2 hedge funds and market neutrality, *Journal of Financial and Quantitative Analysis* 48, 519–547.
- Bongaerts, Dion, Frank de Jong, and Joost Driessen, 2017, An asset pricing approach to liquidity effects in corporate bond markets, *Review of Financial Studies* 30, 1229–1269.

- Boyson, Nicole M., Christof W. Stahel, and Rene M. Stulz, 2010, Hedge fund contagion and liquidity shocks, *Journal of Finance* 65, 1789–1816.
- Brownlees, Christian T., and Robert F. Engle, 2011, Volatility, correlation and tails for systemic risk measurement, Working Paper.
- Brunnermeier, Markus K., 2009, Deciphering the liquidity and credit crunch 2007-2008, *Journal of Economic Perspectives* 23, 77–100.
- Brunnermeier, Markus K., and Lasse H. Pedersen, 2009, Market liquidity and funding liquidity, *Review of Financial Studies* 22, 2201–2238.
- Caballero, Ricardo, Pierre-Olivier Gourinchas, and Emmanuel Farhi, 2017, The safe assets shortage conundrum, *Journal of Economic Perspectives* 31.
- Caballero, Ricardo J., and Arvind Krishnamurthy, 2008, Collective risk management in a flight to quality episode, *Journal of Finance* 63, 2195–2230.
- Cao, Charles, Yong Chen, Bing Liang, and Andrew W. Lo, 2013, Can hedge funds time market liquidity?, *Journal of Financial Economics* 109, 493–516.
- Cao, Charles, David Rapach, and Guofu Zhou, 2014, Which hedge fund styles hedge against bad times?, Working Paper.
- Connolly, Robert, Chris Stivers, and Licheng Sun, 2005, Stock market uncertainty and the stock-bond return relation, *Journal of Financial and Quantitative Analysis* 40, 161–194.
- Dimson, Elroy, 1979, Risk measurement when shares are subject to infrequent trading, *Journal of Financial Economics* 7, 197–226.
- Edelen, Roger M., and Jerold B. Warner, 2001, Aggregate price effects of institutional trading: a study of mutual fund flow and market returns, *Journal of Financial Economics* 59, 195–220.
- Edwards, A., L. Harris, and M. Piwowar, 2007, Corporate bond market transaction costs and transparency, *Journal of Finance* 62.
- Ermolov, A., 2017, Time-varying risk of nominal bonds: How important are macroeconomic shocks?, Working Paper.
- Fernandez, A, MW Klein, A Rebucci, M Schindler, and M Uribe, 2015, Capital control measures: a new dataset, *IMF Working Paper* .
- Fung, William, and David A. Hsieh, 2004, Hedge fund benchmarks: A risk-based approach, *Financial Analyst Journal* 60, 65–80.
- Gilbert, Ethel S., 1968, On discrimination using qualitative variables, *Journal of the American Statistical Association* 63, 1399–1412.

- Goyenko, Ruslan, and Sergei Sarkissian, 2012, Treasury bond illiquidity and global equity returns, *Journal of Financial and Quantitative Analysis* 49, 1217–1253.
- Graham, B., 1973, *The Intelligent Investor (4th rev. ed.)* (Harpers & Row, New York).
- Hamilton, James D., 1989, A new approach to the economic analysis of nonstationary time series and the business cycle, *Econometrica* 57, 357–384.
- Hamilton, James D., 1994, *Time Series Analysis* (Princeton University Press, New York).
- Hollo, Daniel, Manfred Kremer, and Marco Lo Duca, 2012, Ciss - a composite indicator of systemic stress in the financial system, *ECB Working Paper* No. 1426.
- Jiang, Hao, and Bryan Kelly, 2012, Tail risk and hedge fund returns, *Chicago Booth Research Paper* No. 12-44.
- Jotikasthira, Chotibhak, Christian Lundblad, and Tarun Ramadorai, 2012, Asset fire sales and purchases and the international transmission of funding shocks, *Journal of Finance* 67, 2015–2050.
- Kelley, Eric K., and Paul C. Tetlock, 2013, Why do investors trade? Working Paper.
- Kim, Chang-Jin, 1994, Dynamic linear models with Markov-switching, *Journal of Econometrics* 60, 1–22.
- Lesmond, David A., Joseph Ogden, and Charles Trzcinka, 1999, A new estimate of transaction costs, *Review of Financial Studies* 12, 1113–1141.
- Longstaff, Francis, 2004, The flight to liquidity premium in US Treasury bond prices, *Journal of Business* 77, 511–526.
- Longstaff, Francis A., Jun Pan, Lasse H. Pedersen, and Kenneth J. Singleton, 2011, How sovereign is sovereign credit risk?, *American Economic Journal: Macroeconomics* 3, 75–103.
- Martin, Ian, 2017, What is the expected return on the market?, *The Quarterly Journal of Economics* 132, 367–433.
- Mayfield, E. Scott, 2004, Estimating the market risk premium, *Journal of Financial Economics* 73, 465–496.
- Merton, Robert C., 1980, On estimating the expected return on the market: An exploratory investigation, *Journal of Financial Economics* 8, 323–361.
- Namvar, Ethan, Blake Phillips, Kuntara Pukthuanthong, and P Raghavendra Rau, 2016, Do hedge funds dynamically manage systematic risk?, *Journal of Banking and Finance* 64, 1–15.

- Novy-Marx, R., 2013, The other side of value: Good growth and the gross profitability premium, *Journal of Financial Economics* 108, 1–28.
- Patton, Andrew J., 2009, Are "market neutral" hedge funds really market neutral?, *Review of Financial Studies* 22, 2495–2530.
- Patton, Andrew J., and Tarun Ramadorai, 2013, On the high-frequency dynamics of hedge fund risk exposures, *Journal of Finance* 68, 597–635.
- Piotroski, J., 2000, Value investing: The use of historical financial statement information to separate winners from losers, *Journal of Accounting Research* 38, 1–41.
- Sadka, Ronnie, 2012, Hedge-fund performance and liquidity risk, *Journal of Investment Management* 10, 60–72.
- Swensen, David F, 2009, *Pioneering portfolio management: An unconventional approach to institutional investment* (Free Press).
- Teugels, Jozef L., 1990, Some representations of the multivariate bernoulli and binomial distributions, *Journal of Multivariate Analysis* 32, 256–268.
- Titman, Sheridan, and Cristian Tiu, 2011, Do the best hedge funds hedge?, *Review of Financial Studies* 24, 123–168.
- Vayanos, Dimitri, 2004, Flight to quality, flight to liquidity, and the pricing of risk, *NBER Working Paper* No. 10327.
- White, Halbert, 1980, A heteroskedasticity-consistent covariance-matrix estimator and a direct test for heteroskedasticity, *Econometrica* 48, 817–838.

Table 1: Bivariate Regime Switching Model - Estimation Results

Panel A reports estimation results for the bivariate regime switching model developed in Section 2.1. Panel B reports ergodic probabilities for each of the 6 possible regime combinations (S^e, S^b, S^{FTS}).

Panel A: Estimation Results				Panel B: Ergodic Probs.	
	Estim.	s.e.	pval.	Ergodic Probabilities across states (S^e, S^b, S^{FTS})	
P_e	0.989	0.001	0.00	0,0,0	52.00%
Q_e	0.969	0.003	0.00	0,1,0	21.24%
P_b	0.987	0.002	0.00	1,0,0	15.70%
Q_b	0.968	0.005	0.00	1,0,1	3.31%
A	0.009	0.002	0.00	1,1,0	6.41%
B	0.988	0.004	0.00	1,1,1	1.35%
α_1	-0.910	0.149	0.00	Total FTS	4.66%
α_2	1.221	0.670	0.08		
α_{FTS}	-5.453	1.232	0.00		
α_{FTR}	3.463	1.246	0.01		
γ_1	-0.821	0.141	0.00		
γ_2	0.085	0.047	0.08		
γ_{FTS}	0.362	0.083	0.00		
γ_{FTR}	-1.404	0.313	0.00		
v_e	0.024	0.011	0.03		
v_b	0.156	0.042	0.01		
a_e	0.691	0.008	0.00		
b_e	1.554	0.041	0.00		
a_b	0.719	0.011	0.00		
b_b	1.436	0.033	0.00		
θ_{FTS}	-1.338	0.083	0.00		
θ_{LL}	0.006	0.020	0.38		
θ_{LH}	0.072	0.037	0.06		
θ_{HL}	0.013	0.059	0.39		
θ_{HH}	0.349	0.075	0.00		

Table 2: Model-Implied Within-Regime Expected Equity and Bond Returns

Panel A reports expected equity returns (relative to a country specific intercept α_0^i) conditional on the equity volatility (S_t^e) and FTS (S_t^{FTS}) regimes as implied by our Bivariate RS model. For each regime combination, we also calculate the total expected return for the US (including α_0^{us} , final column) and its different components using the equations in (6). Panel B reports corresponding expected bond return differences, the total US bond returns, and their components conditional on being in any of the six possible equity volatility (S_t^e), bond volatility (S_t^b), and FTS (S_t^{FTS}) regimes (calculated using the equations in Section 1.2 of the Online Appendix). All numbers are annualized. The final rows test for significant differences between the state-dependent expected returns.

Panel A: Equities

	Switch to high equity vol	Stay in high equity vol	Switch out high equity vol	Switch to FTS	Stay in FTS	Switch out FTS	Total ER (US)
$E[r_{e,t+1} S_t^e = 0, S_t^{FTS} = 0; I_t]$							
Formula	$\alpha_1(1 - P^e)$			$\alpha_{FTS}(1 + v_e)(1 - P^e)A$			10.14%
Total	-2.592%			-0.1397%			(0.95%)
$E[r_{e,t+1} S_t^e = 1, S_t^{FTS} = 0; I_t]$							
Formula			$\alpha_2(1 - Q^e)$	$\alpha_{FTS}(1 + v_e)Q^eA$			10.17%
Total			9.567%	-12.274%			(1.04%)
$E[r_{e,t+1} S_t^e = 1, S_t^{FTS} = 1; I_t]$							
Formula			$\alpha_2(1 - Q^e)$		$Q^eB\alpha_{FTS}v_e$	$[(1 - Q^e) + Q^e(1 - B)]\alpha_{FTR}$	28.12%
Total			9.567%		-31.951%	37.623%	(3.19%)
							($\alpha_0^{us} = 12.88$)
	estim.		s.e.				
$(ER_e^{1,0}) - (ER_e^{0,0})$	0.03%		0.07%				
$(ER_e^{1,1}) - (ER_e^{1,0})$	17.97%		2.13%				
$(ER_e^{1,1}) - (ER_e^{0,0})$	17.95%		2.19%				

Table 2 continued...

Panel B: Bonds

		Switch to high bond vol	Stay in high bond vol	Switch out high bond vol	Switch to FTS	Stay in FTS	Switch out FTS	Total ER (US)
$E[v_{b,t+1} S_t^c = 0, S_t^b = 0, S_t^{FTS} = 0; I_t]$ ($ER_b^{00,0}$)	Formula	$\gamma_1(1 - P^b)$		$\gamma_{FTS}(1 + v_b)(1 - P^c)A$				4.40%
	Total	-2.338%		0.011%				(0.57%)
$E[v_{b,t+1} S_t^c = 0, S_t^b = 1, S_t^{FTS} = 0; I_t]$ ($ER_b^{01,0}$)	Formula		$\gamma_2(1 - Q^b)$	$\gamma_{FTS}(1 + v_b)(1 - P^c)A$				7.42%
	Total		0.680%	0.011%				(0.53%)
$E[v_{b,t+1} S_t^c = 1, S_t^b = 0, S_t^{FTS} = 0; I_t]$ ($ER_b^{10,0}$)	Formula	$\gamma_1(1 - P^b)$		$\gamma_{FTS}(1 + v_b)Q^cA$				5.31%
	Total	-2.338%		0.918%				(0.63%)
$E[v_{b,t+1} S_t^c = 1, S_t^b = 0, S_t^{FTS} = 1; I_t]$ ($ER_b^{10,1}$)	Formula	$\gamma_1(1 - P^b)$			$\gamma_{FTS}v_bQB$	$[(1 - Q^c) + Q^c(1 - B)]\gamma_{FTR}$		2.71%
	Total	-2.338%			13.576%	-15.257%		(1.43%)
$E[v_{b,t+1} S_t^c = 1, S_t^b = 1, S_t^{FTS} = 0; I_t]$ ($ER_b^{11,0}$)	Formula		$\gamma_2(1 - Q^b)$	$\gamma_{FTS}(1 + v_b)Q^cA$				8.33%
	Total		0.680%	0.918%				(1.58%)
$E[v_{b,t+1} S_t^c = 1, S_t^b = 1, S_t^{FTS} = 1; I_t]$ ($ER_b^{11,1}$)	Formula		$\gamma_2(1 - Q^b)$		$\gamma_{FTS}v_bQB$	$[(1 - Q^c) + Q^c(1 - B)]\gamma_{FTR}$		5.73%
	Total		0.680%	-15.26%	13.576%	-15.26%		(1.53%)
($\gamma_0^{ns} = 6.73\%$)								

	estim.	s.e.
$ER_b^{1,1}$ vs $ER_b^{1,0}$	-2.60%	0.41%
$ER_b^{1,1}$ vs $ER_b^{0,1}$	16.24%	2.24%
$ER_e^{0,0}$ vs $ER_b^{0,0}$	-0.40%	0.14%

Table 3: Model-Implied Within-Regime Equity and Bond Return Volatilities

This table reports the model-implied within-regime equity and bond return volatilities, calculated using the expressions in Appendix C. As input for the shock volatilities, we take the average shock volatilities across countries. The equity volatility only depends on the equity regime and the FTS regime; the bond volatility depends on equity, bond and FTS regimes. The model-implied total volatility is calculated using the ergodic probabilities. All numbers are annualized.

Equity Volatility		Bond Volatility	
$Var(r_{e,t+1} S_t^e = 0, S_t^{FTS} = 0; I_t)$	16.18%	$Var(r_{b,t+1} S_t^e = 0, S_t^b = 0, S_t^{FTS} = 0; I_t)$	6.28%
		$Var(r_{b,t+1} S_t^e = 0, S_t^b = 1, S_t^{FTS} = 0; I_t)$	8.50%
$Var(r_{e,t+1} S_t^e = 1, S_t^{FTS} = 0; I_t)$	25.36%	$Var(r_{b,t+1} S_t^e = 1, S_t^b = 0, S_t^{FTS} = 0; I_t)$	6.31%
		$Var(r_{b,t+1} S_t^e = 1, S_t^b = 0, S_t^{FTS} = 1; I_t)$	7.74%
$Var(r_{e,t+1} S_t^e = 1, S_t^{FTS} = 1; I_t)$	27.66%	$Var(r_{b,t+1} S_t^e = 1, S_t^b = 1, S_t^{FTS} = 0; I_t)$	8.52%
		$Var(r_{b,t+1} S_t^e = 1, S_t^b = 1, S_t^{FTS} = 1; I_t)$	9.63%
Unconditional	19.22%		7.07%

Table 4: FTS Summary - All Models

This table reports FTS incidence (column 2), equity, bond and return impact (defined as the difference between the bond and equity returns) on all FTS days (columns 3 to 5) and on the first day of a FTS spell (columns 6 to 8), the ratio of volatility on FTS relative to non-FTS days (columns 9 and 10), and stock-bond return correlations during FTS episodes (column 11), over the full sample (column 12), and on non-FTS days (column 13). For each indicator, we report the equally-weighted average, the median, and interquartile range (IQR).

Panel A: Bivariate RS Model

	FTS Incidence	All FTS Days			First FTS Days			Vol Ratio		Stock-Bond Correlation		
		equity	bond	Impact	equity	bond	Impact	equity	bond	FTS	All	Non-FTS
Average (EW)	4.73%	-0.33%	0.11%	0.44%	-0.91%	0.19%	1.10%	1.95	1.23	-58.48%	-10.30%	-4.18%
Median	5.01%	-0.33%	0.10%	0.43%	-1.08%	0.18%	1.16%	1.94	1.26	-60.01%	-12.93%	-7.03%
IQR	4.03%	-0.41%	0.09%	0.29%	-1.34%	0.08%	0.57%	1.72	1.17	-62.49%	-14.87%	-8.67%
	5.48%	-0.21%	0.11%	0.51%	-0.34%	0.28%	1.48%	2.00	1.29	-57.00%	-4.79%	2.08%

Panel B: Threshold Model

	FTS Incidence	All FTS Days			First FTS Days			Vol Ratio		Stock-Bond Correlation		
		equity	bond	Impact	equity	bond	Impact	equity	bond	FTS	All	Non-FTS
Average (EW)	4.64%	-2.18%	0.57%	2.75%	-2.18%	0.57%	2.75%	1.41	1.14	-17.38%	-10.30%	2.95%
Median	4.64%	-2.17%	0.55%	2.71%	-2.17%	0.55%	2.71%	1.37	1.14	-23.99%	-12.93%	0.34%
IQR	4.60%	-2.43%	0.54%	2.44%	-2.43%	0.54%	2.44%	1.30	1.06	-35.65%	-14.89%	-2.39%
	4.68%	-1.89%	0.58%	2.99%	-1.89%	0.58%	2.99%	1.47	1.21	-9.13%	-3.71%	9.52%

Panel C: Ordinal Model

	FTS Incidence	All FTS Days			First FTS Days			Vol Ratio		Stock-Bond Correlation		
		equity	bond	Impact	equity	bond	Impact	equity	bond	FTS	All	Non-FTS
Average (EW)	4.65%	-2.00%	0.32%	2.32%	-2.00%	0.32%	2.32%	1.37	1.09	-24.42%	-10.30%	-2.66%
Median	4.66%	-1.97%	0.30%	2.26%	-1.97%	0.30%	2.26%	1.35	1.08	-25.52%	-12.93%	-4.55%
IQR	4.62%	-2.27%	0.29%	1.97%	-2.27%	0.29%	1.97%	1.23	0.99	-30.32%	-14.89%	-7.46%
	4.67%	-1.68%	0.33%	2.55%	-1.68%	0.33%	2.55%	1.48	1.19	-18.39%	-3.71%	3.69%

Table 5: Ordinal FTS Measure

This table reports cross-country summary statistics for the Ordinal FTS measure discussed in Section 3.2. Column (2) reports summary statistics for the threshold level, calculated as the minimum of the ordinal numbers on days that satisfy a set of “mild” FTS conditions. Column (3) reports the percentage of observations that have an ordinal number above this threshold. Column (4) reports how much of those observations have an ordinal measure larger than 50% (calculated as 1 minus the percentage of false positives, i.e. the percentage of observations with an ordinal number above the threshold that do not meet our FTS criteria). Column (5) shows the percentage of observations in the full sample that have an ordinal FTS probability larger than 50%.

	Threshold	% obs above Threshold	% (obs > threshold) with FTS prob > 50%	% obs with FTS Prob > 50%
Mean	67.95%	15.61%	31.14%	4.65%
Median	68.97%	13.85%	33.72%	4.66%
Min	63.04%	9.34%	20.84%	4.57%
Max	74.00%	22.13%	49.83%	4.75%
Q1	66.45%	13.54%	26.69%	4.63%
Q3	69.65%	17.50%	34.46%	4.67%

Table 6: Joint FTS Incidence - Overlap with high equity volatility states

The first three data columns report joint FTS incidence as well as equity and bond return impact on FTS days across countries. The last two columns show the percentage overlap in days between our FTS events and stress times in equity markets. For each country, we select the same number of days with the highest equity market volatilities as the number of FTS days we identify for that country, and calculate the percentage overlap with our FTS indicator. We use the backward-looking Gaussian kernel method with bandwidths (bw) of either 5 or 25 days to estimate equity market volatility. We show country-specific results and summary statistics (average, min, max, interquartile range) for our full sample of 23 countries.

	FTS Incidence	Equity Impact	Bond Impact	% of FTS that are also high vol days	
				Vol (bw = 5 days)	Vol (bw = 25 days)
United States	2.27%	-2.02%	0.54%	21.4%	7.1%
Germany	2.21%	-2.23%	0.40%	27.3%	20.5%
United Kingdom	2.15%	-1.86%	0.43%	18.6%	15.6%
Switzerland	1.59%	-2.35%	0.25%	29.4%	21.7%
Japan	1.29%	-2.38%	0.37%	11.3%	7.5%
Canada	1.60%	-2.27%	0.50%	20.5%	19.7%
Sweden	2.14%	-2.57%	0.38%	10.1%	7.4%
Australia	1.58%	-1.85%	0.55%	14.5%	4.3%
Denmark	1.73%	-2.02%	0.32%	16.8%	2.5%
France	2.06%	-2.26%	0.43%	18.9%	19.5%
Belgium	1.99%	-1.81%	0.37%	15.1%	17.9%
Italy	2.12%	-2.42%	0.47%	21.3%	21.8%
New Zealand	0.38%	-2.01%	0.59%	16.7%	16.7%
Netherlands	2.36%	-2.27%	0.39%	27.9%	26.9%
Ireland	1.36%	-2.59%	0.45%	11.1%	5.6%
Spain	2.06%	-2.37%	0.42%	23.5%	14.1%
Austria	1.67%	-2.01%	0.40%	8.4%	0.6%
Czech Republic	1.56%	-2.68%	0.40%	20.3%	15.3%
Finland	1.64%	-2.75%	0.40%	3.7%	0.0%
Greece	1.14%	-2.69%	0.43%	2.0%	0.0%
Norway	1.51%	-2.20%	0.37%	4.5%	3.4%
Poland	1.54%	-2.97%	0.48%	8.6%	8.6%
Portugal	2.06%	-2.16%	0.44%	35.0%	31.4%
Mean	1.74%	-2.29%	0.43%	21.6%	17.5%
Median	1.67%	-2.27%	0.42%	22.4%	19.7%
Q1	1.55%	-2.50%	0.39%	14.9%	9.5%
Q3	2.09%	-2.02%	0.46%	28.0%	23.1%

Table 7: Alternative Market Stress Indicators

This table reports regressions of changes in consumer confidence, safe have currency values, the TED spread, gold prices, and equity implied volatility measures on the aggregate FTS dummy (instances). The consumer confidence indicator is the monthly (country-specific) OECD consumer confidence indicator (seasonally-adjusted), available for all countries except for Norway. The safe-haven currencies include the Swiss Franc, the Japanese Yen, and the US dollar and are expressed in terms of local currency per unit of safe currency. The daily TED spread is available for all countries except Ireland, Austria, Czech Republic and Poland. The price of gold is measured by the S&P GSCI gold index in US dollars. Country-specific equity implied volatility measures are VIX for US and Canada, VFTS for the UK, VDAX for the other European countries, and VJX for Japan, Australia and New Zealand. Changes are measured in percentage terms for the currencies and gold, and in simple terms for all other indicators. Regressions are run monthly for the consumer confidence (with monthly FTS incidence measured as the fraction of FTS days within that month) and daily for all others. For gold, we consider specifications with and without the global equity market return (in US dollars) as a control variable. For all regressions, we show the slope parameter estimates for the US, Germany, and the UK, as well as the average, standard deviation, and top/bottom quartile of parameter estimates across all countries for which data is available. The second to last column shows the number of countries for which the parameters estimates are significant at the 10% level. The last column shows the number of countries for which data is available. ***, **, and * represent statistical significance at the 1, 5 and 10 percent level, respectively, using heteroskedasticity-consistent standard errors.

	US	Germany	UK	Mean	Std	6th	17th	Sign.	Obs
OECD Consumer Confidence	-0.563***	-0.231*	-0.429***	-0.389	0.212	-0.511	-0.281	19	22
Swiss Franc	0.169*	0.196***	0.222***	0.327	0.276	0.152	0.346	21	22
Japanese Yen	0.193***	0.156**	0.312***	0.439	0.337	0.199	0.617	20	22
US Dollar	-	-0.177***	-0.058	0.073	0.291	-0.121	0.160	13	22
TED Spread	0.051***	-0.002	-0.004	0.012	0.026	0.000	0.007	5	19
Gold	0.122	0.171*	-0.004	0.026	0.137	-0.070	0.115	3	23
Gold, Controlling for Market Return	0.370***	0.396***	0.200**	0.202	0.160	0.082	0.312	12	23
Equity Implied Volatility	3.176***	2.139***	2.432***	2.252	0.448	2.009	2.273	23	23

Table 8: FTS and Mutual Fund Flows

This table reports estimated coefficients from regressions of mutual fund flows (as a percentage of the lagged AUM) on our FTS variable. In the first regression, we only include the contemporaneous effect (β_{FTS}); in the second regression, we also include the lagged FTS variable and report the total FTS effect as the sum of contemporaneous effect (β_{FTS}) and the lagged effect ($\bar{\beta}_{FTS}$). The FTS variable is the percentage of days within the week or month that signals a FTS for the US. We show results for both weekly-reporting-only funds and all funds. For the latter, we differentiate between the monthly flows based on reported monthly AUMs, and weekly flows Lipper constructed by distributing monthly flows evenly among the weeks within a month for funds reporting at the monthly frequency only. We exclude ETFs, but the Online Appendix shows results including ETFs. ***, **, and * represent statistical significance at the 1, 5 and 10 percent level, respectively, using Newey-West standard errors (using either 6 monthly or 12 weekly lags).

	Weekly-reporting funds only		All funds			
	Weekly		Weekly		Monthly	
	β_{FTS}	$\beta_{FTS} + \bar{\beta}_{FTS}$	β_{FTS}	$\beta_{FTS} + \bar{\beta}_{FTS}$	β_{FTS}	$\beta_{FTS} + \bar{\beta}_{FTS}$
Equity	-0.0034***	-0.0052***	-0.0029***	-0.0043***	-0.0173***	-0.0270***
Treasury	0.0000	0.0008	0.0050	0.0067**	0.0377***	0.0541***
Corporate IG	-0.0013	-0.0017	0.0005	0.0005	0.0033	0.0006
Corporate HY	-0.0048**	-0.0059**	-0.0042***	-0.0052***	-0.0296***	-0.0342***
Money Market - All	0.0023	0.0048	0.0028	0.0056	0.0368**	0.0453**
Money Market - government only	0.0208***	0.0291***	0.0210***	0.0298***	0.0819***	0.1619***

Table 9: FTS Return Impact on Quality and Liquidity Double Sorted Corporate Bond Portfolios

This table reports the average effective percentage bid-ask half spreads and FTS impact estimates for corporate bond portfolios double sorted on quality (measured by the KMV's EDF) and liquidity (measured by amount issued). The table on the left reports contemporaneous exposures to a duration-matched Treasury-bond benchmark and the aggregate US equity market as well as the FTS impact (see Equation (15) in Section 4.4.1). The table in the middle reports the sum of contemporaneous and lagged FTS impact, after correcting for contemporaneous and lagged exposures to the Treasury and equity market benchmark portfolios. The table on the right reports the sum of the contemporaneous and lagged FTS exposures, not corrected for benchmark risks. The bottom rows report the p -value from a test of the hypothesis that (1) low and high liquidity bonds within the same quality quintile have the same FTS exposures; or (2) the bottom and high quality quintiles within the same liquidity bucket have the same FTS exposures.

	Liquidity	Av. effective % bid-ask half spread	β_{TB}	β_{EQ}	FTS Impact (γ)	FTS impact (incl. lags)	Total FTS impact (not risk corrected)
Bottom Quintile (lowest default risk)	low	0.37%	0.744***	0.057***	-0.46%	-0.78%***	0.08%
	high	0.27%	0.684***	0.041***	-0.47%**	-0.43%**	0.04%
	<i>diff</i>	0.10%***	-0.06	-0.02	-0.01%	0.35%*	-0.05%
Quintile 2	low	0.46%	0.691***	0.058***	-0.87%***	-0.88%***	-0.35%
	high	0.33%	0.707***	0.071***	-0.69%***	-0.68%***	-0.16%
	<i>diff</i>	0.13%***	-0.02	-0.01	-0.18%	-0.19%	-0.19%
Quintile 3	low	0.53%	0.661***	0.107***	-0.88%***	-0.95%***	-0.51%*
	high	0.40%	0.721***	0.104***	-0.98%***	-0.9%**	-0.6%**
	<i>diff</i>	0.14%***	-0.06*	0.00	0.1%	-0.06%	0.09%
Quintile 4	low	0.73%	0.514***	0.155***	-1.16%***	-1.29%***	-1.12%***
	high	0.51%	0.523***	0.104***	-1.26%***	-1.11%**	-1.11%**
	<i>diff</i>	0.23%***	-0.01	0.05	0.11%	-0.18%	-0.01%
Top Quintile (highest default risk)	low	0.87%	0.288***	0.254***	-2.17%***	-1.99%***	-2.71%***
	high	0.71%	0.361***	0.245***	-2.49%***	-2.00%***	-2.93%***
	<i>diff</i>	0.16%***	-0.07	0.01	0.32%	0.01%	0.22%
H_0 : equal FTS exposure impact for between credit quality quintiles 1 and 5 (within same liquidity quintiles)					[0.00]	[0.02]	[0.00]
H_0 : equal FTS exposure impact between low and high liquidity quintiles (within same credit quality quintiles)					[0.67]	[0.48]	[0.72]

Table 10: FTS Return Impact on Quality and Liquidity Double Sorted International Equity Portfolios

This table reports percentages of non-zero daily returns and FTS impact estimates for international stocks double sorted first on quality and subsequently on liquidity (see Section 4.4.2 for details). The table on the left reports the cross-country averages and IQRs of exposures—sum of contemporaneous and lagged—to both global and local benchmark portfolios, as well as the FTS exposure (see Equation (16) in Section 4.4.2). The table on the right reports the sum of the contemporaneous and lagged FTS exposures, not correcting for exposures to benchmark portfolios. The bottom rows report the p -value from a test of the hypothesis that (1) FTS exposures are the same for low and high liquidity equities within the same credit quality tercile; or (2) FTS exposures are the same for the bottom and top credit quality terciles within the same liquidity tercile.

	Liquidity	% day with non-zero returns	Global β (incl lag)		Local β (incl lag)		FTS Impact (γ)		FTS impact (incl lag) (not risk corrected)
			Mean	IQR	Mean	IQR	(incl lag)		
Bottom Quality Tercile	Low	53.9%	0.41	0.10	0.10	0.13	-0.18%**	-0.97%***	
	Intermediate	77.6%	0.47	0.18	0.10	0.15	-0.22%***	-1.46%***	
	High	89.3%	0.50	0.20	0.07	0.10	-0.06%	-1.92%***	
	High minus Low	35.4%	0.09		-0.03		0.12%*	-0.96%***	
Intermediate Quality Tercile	Low	55.9%	0.43	0.09	0.09	0.10	-0.16%**	-0.93%***	
	Intermediate	78.6%	0.46	0.15	0.11	0.13	-0.16%**	-1.35%***	
	High	90.0%	0.49	0.24	0.08	0.07	0.08%	-1.76%***	
	High minus Low	34.1%	0.06		-0.01		0.24%***	-0.83%***	
Top Quality Tercile	Low	56.7%	0.42	0.16	0.11	0.11	-0.17%***	-0.90%***	
	Intermediate	78.3%	0.47	0.15	0.10	0.14	-0.11%	-1.34%***	
	High	89.4%	0.37	0.23	0.07	0.10	0.13%**	-1.70%***	
	High minus Low	32.7%	-0.05		-0.04		0.30%***	-0.79%***	
H_0 : equal FTS exposures between high and low liquidity buckets (within same quality buckets)							[0.00]	[0.00]	
H_0 : equal FTS exposures for bottom and top quality buckets (within same liquidity buckets)							[0.00]	[0.00]	

Table 11: FTS and Emerging Markets

This table reports the FTS exposures for emerging equity markets (Panel A) and emerging bond markets (Panel B) estimated using specification (16) in Section 5.2. The three global FTS indicators considered are: an indicator that equals 1 when at least half of countries are in a FTS (columns 2-3), a global-model-based indicator (columns 4-5), and the US FTS indicator (columns 6-7). We use the global (US) equity market return as the benchmark equity market return under the first two (third) definition(s). To account for non-synchronous trading hours, we include both contemporaneous and one-day-lagged benchmark returns and FTS indicators for European, African, and Middle Eastern Markets. For Latin-American (Asian) markets, we only use contemporaneous (one-day-lagged) benchmark returns and FTS indicators. When reporting the benchmark beta and FTS exposure, we sum across contemporaneous and lagged coefficients, if applicable. The parameters c_1 , β_1 , and γ_1 capture the potential effect of market integration on the country-specific intercepts and benchmark and FTS exposures, respectively. ***, **, and * indicate statistical significance at the 1%, 5%, and 10% level (calculated using standard errors clustered on time).

Panel A: Emerging Equity Markets

	50% countries in FTS		Global FTS (model)		US FTS	
	benchmark	FTS	benchmark	FTS	benchmark	FTS
Average	0.26	-2.46%	0.28	-0.97%	0.13	-1.94%
Median	0.19	-2.65%	0.20	-1.01%	0.05	-2.08%
Q1	0.02	-2.96%	0.04	-1.24%	-0.05	-2.38%
Q3	0.40	-1.79%	0.40	-0.74%	0.27	-1.47%
# significant	17	25	17	20	15	25
	Estim	pval	Estim	pval	Estim	pval
c_1	-0.0002	0.55	-0.0002	0.59	0.0000	0.94
β_1	0.416***	0.00	0.405***	0.00	0.309***	0.00
γ_1	0.0147***	0.00	0.0057***	0.01	0.0102***	0.00

Panel B: Emerging Bond Markets

	50% countries in FTS			Global FTS (model)			US FTS		
	β (bo)	β (eq)	FTS	β (bo)	β (eq)	FTS	β (bo)	β (eq)	FTS
Average	0.25	0.27	-0.12%	0.17	0.27	-0.18%	0.20	0.20	-0.24%
Median	0.25	0.26	-0.13%	0.13	0.26	-0.19%	0.19	0.18	-0.27%
Q1	0.12	0.18	-0.39%	0.02	0.17	-0.45%	0.07	0.11	-0.32%
Q3	0.34	0.35	0.17%	0.27	0.34	0.11%	0.28	0.26	-0.14%
# significant	18	22	2	18	23	7	15	23	4
	estim	pval		estim	pval		estim	pval	
c_1	-0.0002	0.12		-0.0002	0.22		-0.0002	0.25	
β_1 (bo)	0.0855**	0.03		0.0912**	0.02		0.0766**	0.02	
β_1 (eq)	0.0203	0.27		0.0152	0.42		0.0072	0.46	
γ_1	-0.0022	0.63		-0.0013	0.26		-0.0006	0.27	

Table 12: FTS and Endowment Asset Classes

This table reports results from regression in Equation (17) for various asset classes frequently included in endowment portfolios. The third column shows the indices used as proxies for the asset classes. The subsequent columns report coefficient estimates. We control for the domestic equity market for all asset classes (except for the benchmark domestic bonds), and also control for the domestic bond market for private equity and non-benchmark fixed income asset classes. We use daily returns, expressed in percentages, over the period 2004-2015. ***, **, and * represent statistical significance at the 1, 5 and 10 percent level, respectively, using heteroskedasticity-consistent standard errors.

Asset classes	Index used as proxy	α	β_{FTS}	β_{Equity}	β_{Bond}
Equity	Domestic equity	0.105***	-1.858***	-	-
	Foreign equity	0.016	-0.040	0.479***	-
	Emerging market equity	0.032*	-0.040	-	-
	Private equity	-0.002	0.023	1.019***	-0.168***
Hedge funds	All strategies	0.006*	-0.173***	0.111***	-
	Absolute return	0.002	-0.052**	0.018***	-
Real assets	Real estate	-0.008	0.322**	1.418***	-
	Natural resources	-0.049	0.488**	0.516***	-
	Commodities	-0.035	0.308*	0.431***	-
Fixed income	Domestic bonds	0.002	0.637***	-	-
	Foreign bonds	0.003	0.067	0.021***	0.376***
	Inflation-linked bonds	-0.018***	0.050	0.033***	0.646***
	High-yield bonds	0.030***	-0.081*	0.067***	0.010
	Cash	0.006***	0.005***	0.000	-

Table 13: FTS and Endowment Portfolios

This table reports asset allocations and estimation results for three endowment portfolios: the dollar-weighted portfolio across the sample of university endowments in the NACUBO–Commonfund Study of Endowments, and the Harvard and Yale endowment portfolio. Panel A shows the endowments’ allocation to asset classes for receptively 2005, 2010 and 2015. For the Nacubo and Yale portfolio it is the actual allocation; for the Harvard portfolio the target allocation. Allocations are in percent. For the Nacubo and Yale portfolios, the foreign equity allocation includes emerging market equity. Panel B reports estimated coefficients from regressions of our endowment portfolio returns on the US FTS dummy. The first two columns report the results for the model without adding control variables; the next three columns for the model with the domestic equity market as control variable; the latter three columns for the model with a standard “60-40” domestic equity–bond benchmark portfolio as control variable. ***, **, and * represent statistical significance at the 1, 5 and 10 percent level, respectively, using heteroskedasticity-consistent standard errors.

Panel A: Weights of asset classes

Asset classes	Nacubo portfolio			Harvard portfolio			Yale Portfolio		
	2005	2010	2015	2005	2010	2015	2005	2010	2015
Equity									
Domestic equity	34.3	15.0	16.0	15.0	11.0	11.0	14.1	7.0	3.9
Foreign equity	14.0	16.0	19.0	10.0	11.0	11.0	13.7	9.9	14.7
Emerging market equity	0.0	0.0	0.0	5.0	11.0	11.0	0.0	0.0	0.0
Private equity	7.1	15.6	15.0	13.0	13.0	18.0	14.8	30.3	32.5
Hedge funds									
All strategies	16.6	21.3	22.0	0.0	0.0	0.0	0.0	0.0	0.0
Absolute return	0.0	0.0	0.0	12.0	16.0	16.0	25.7	21.0	20.5
Real assets									
Real estate	4.5	5.2	6.0	10.0	9.0	12.0	25.0	27.5	14.0
Natural resources	3.6	7.3	6.0	0.0	9.0	11.0	0.0	0.0	6.7
Commodities	0.0	0.0	1.0	13.0	5.0	0.0	0.0	0.0	0.0
Fixed income									
Domestic bonds	17.2	12.0	9.0	11.0	4.0	7.0	4.9	4.0	4.9
Foreign bonds	0.0	0.0	0.0	5.0	2.0	1.0	0.0	0.0	0.0
Inflation-linked bonds	0.0	0.0	0.0	6.0	5.0	2.0	0.0	0.0	0.0
High-yield bonds	0.0	2.6	2.0	5.0	2.0	0.0	0.0	0.0	0.0
Cash									
	2.7	5.0	4.0	-5.0	2.0	0.0	1.8	0.3	2.8

Panel B: Parameter Estimates

Portfolio	without controls		with domestic equity		with 60 equity / 40 bond		
	α	β_{FTS}	α	β_{FTS}	α	β_{FTS}	
Nacubo	0.060***	-1.030***	0.001	0.019	0.565***	0.000	-0.195***
Harvard	0.055***	-0.911***	-0.003	0.113*	0.551***	-0.003	-0.107*
Yale	0.081***	-1.421***	-0.004	0.096	0.816***	-0.006	-0.220***
							$\beta_{60/40}$
							0.971***
							0.935***
							1.396***

Table 14: FTS and Hedge Fund Returns

This table reports estimation results for our FTS dummy model (columns (2) to (5)), our two abnormal return models without lags (column (6) and (7)), our FTS dummy model including 2 lags (column (8)), and our model with FTS time-dependent exposures (columns (9) to (11)). For the FTS dummy model without lags we report the alpha, the risk exposure, the adjusted R^2 measure and the FTS beta. For the other models we only report the FTS beta. Column (10) and (11) report the difference in beta over two combinations of days, based on the beta polynomial specification for the restricted model without lags. ζ_1 and ζ_2 are the optimums of the beta specification (i.e. the distance to FTS for which the beta is respectively a maximum and a minimum). The optima are calculated by taking the first derivative of Equation (18) with respect to ζ , set it equal to zero and then solving for ζ . The optimums are

$$\zeta_{1,2} = \exp \left[\frac{-\left(2\beta'_{i2}\right) \pm \sqrt{\left(2\beta'_{i2}\right)^2 - 4\left(3\beta'_{i3}\right)\left(\beta'_{i1}\right)}}{2\left(3\beta'_{i3}\right)} \right] - 1.$$

***, **, and * represent statistical significance at the 1, 5, and 10 percent level, respectively, and are based on heteroskedasticity-consistent standard errors.

Fund Categories	(2)	(3)	(4)	(5)	(6)	(7)	(8)	(9)	(10)	(11)	(12)	(13)
	α_i	β_i	Standard Regression R^2	β_i^{FTS}	Abnormal 1 β_i^{FTS}	Abnormal 2 β_i^{FTS}	Lag model β_i^{FTS}	β_i^{FTS}	Polynomial model $(250) - (\zeta_1)$	$(\zeta_1) - (1)$	ζ_1	ζ_2
Convertible arbitrage	-0.0026	-0.0344**	0.0117	-0.1716***	-0.1843***	-0.2046***	-0.1741***	-0.1832***	-	-	-	-
Distressed securities	0.0026	-0.0062	0.0017	-0.0489*	-0.0487**	-0.0538***	-0.0495**	-0.0907***	-0.0954***	0.1133***	69	3
Event driven	0.0132***	0.1500***	0.4137	-0.1904***	-0.1976**	-0.0559***	-0.1919***	-0.1586***	-0.1608***	0.1201***	58	3
Equity hedge	0.0026	0.2374***	0.5554	-0.2101***	-0.2168***	-0.0483**	-0.2141***	-0.1446***	-0.1822***	0.1205***	64	3
Equity market neutral	0.0006	0.0023	0.0005	-0.0221	-0.0245	-0.0061	-0.0212	-0.0576**	-0.1154***	0.1227***	78	7
Merger arbitrage	0.0139***	0.1235***	0.3128	-0.0942**	-0.1026***	-0.0636***	-0.0942**	-0.0999***	-	-	-	-
Global macro	0.0113*	0.0038	0.0061	-0.1667*	-0.1653***	-0.0573	-0.1649*	-0.1681***	-0.1706***	0.1583***	75	4
Relative value	0.0096**	0.0414***	0.0618	-0.1801***	-0.1923***	-0.0920***	-0.1835***	-0.1932***	-	-	-	-
Market directional	0.0095*	0.2039***	0.4262	-0.2428***	-0.2520***	-0.0559**	-0.2476***	-0.2040***	-0.1483***	0.1041*	64	3
Absolute return	0.0019	0.0185***	0.0292	-0.0524**	-0.0575***	-0.0117	-0.0531**	-0.0343**	-0.0957***	0.0706***	56	3
Equal weighted strategies	0.0075***	0.0675***	0.2582	-0.1382***	-0.1440***	-0.0748***	-0.1393***	-0.1233***	-0.1018***	0.0793***	63	3
Overall hedge fund	0.0073**	0.1118***	0.3769	-0.1729***	-0.1789***	-0.0577***	-0.1749***	-0.1516***	-0.1509***	0.1193***	63	3

Figure 1: Co-Exceedance Model - FTS Incidence and Return Impact

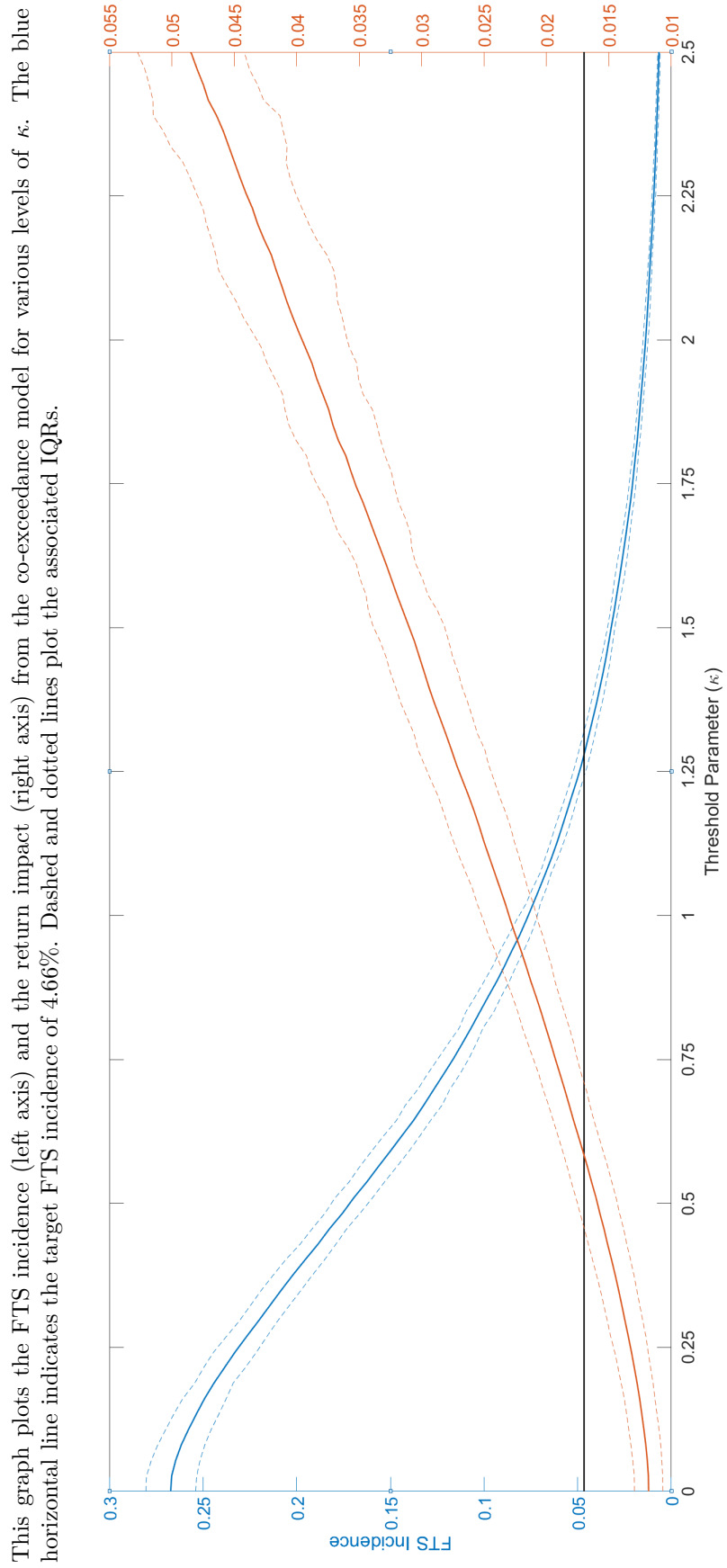


Figure 2: Ordinal Model - FTS Incidence and Return Impact - Various Volatility Scales

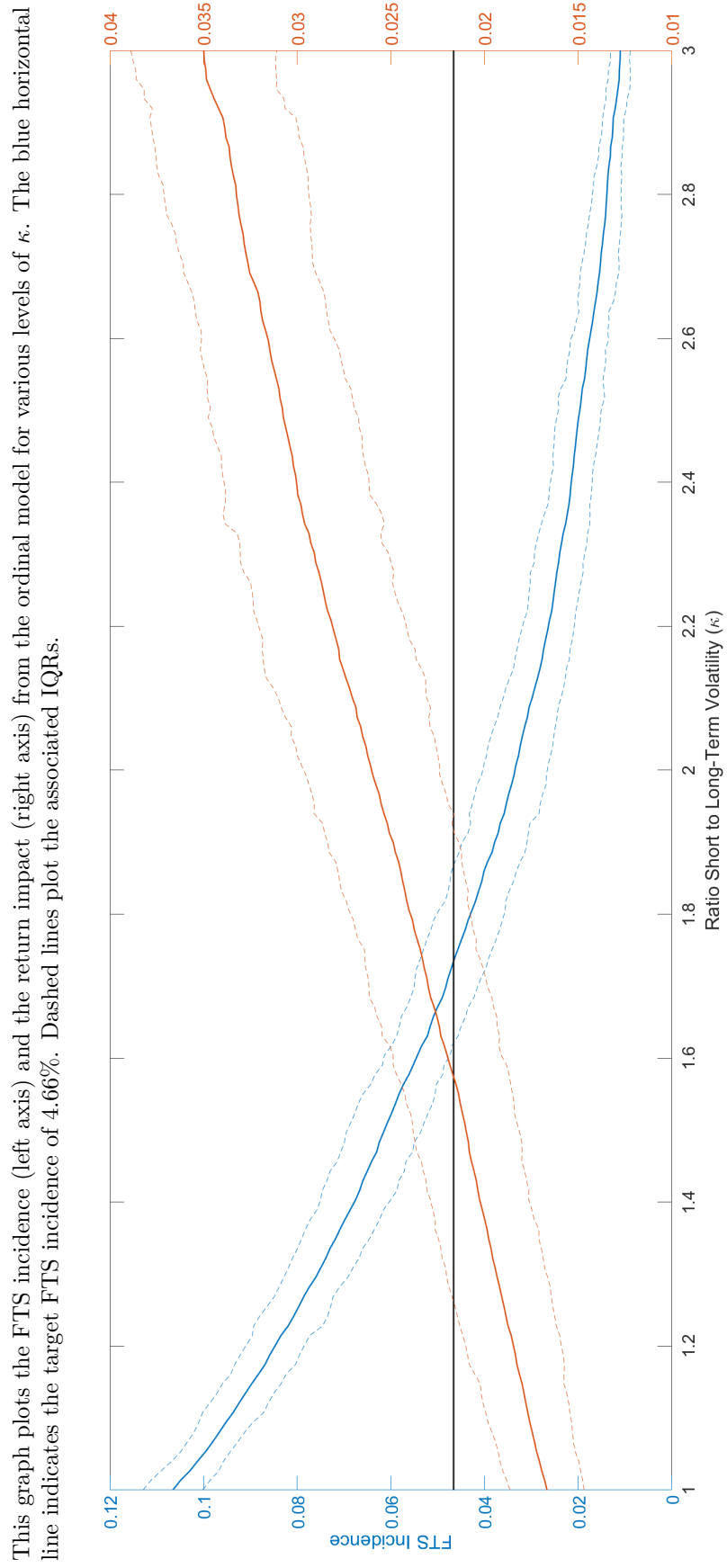


Figure 3: FTS Probability - US - Individual and Joint

This figure plots the probability of being in a FTS according to the Bivariate Regime Switching model (top panel; see Section 2), the Co-Exceedance model (second panel; see Section 3.1), the Ordinal Approach (third panel, see Section 3.2), and according to the Joint FTS measure (bottom panel, see Section 3.3).

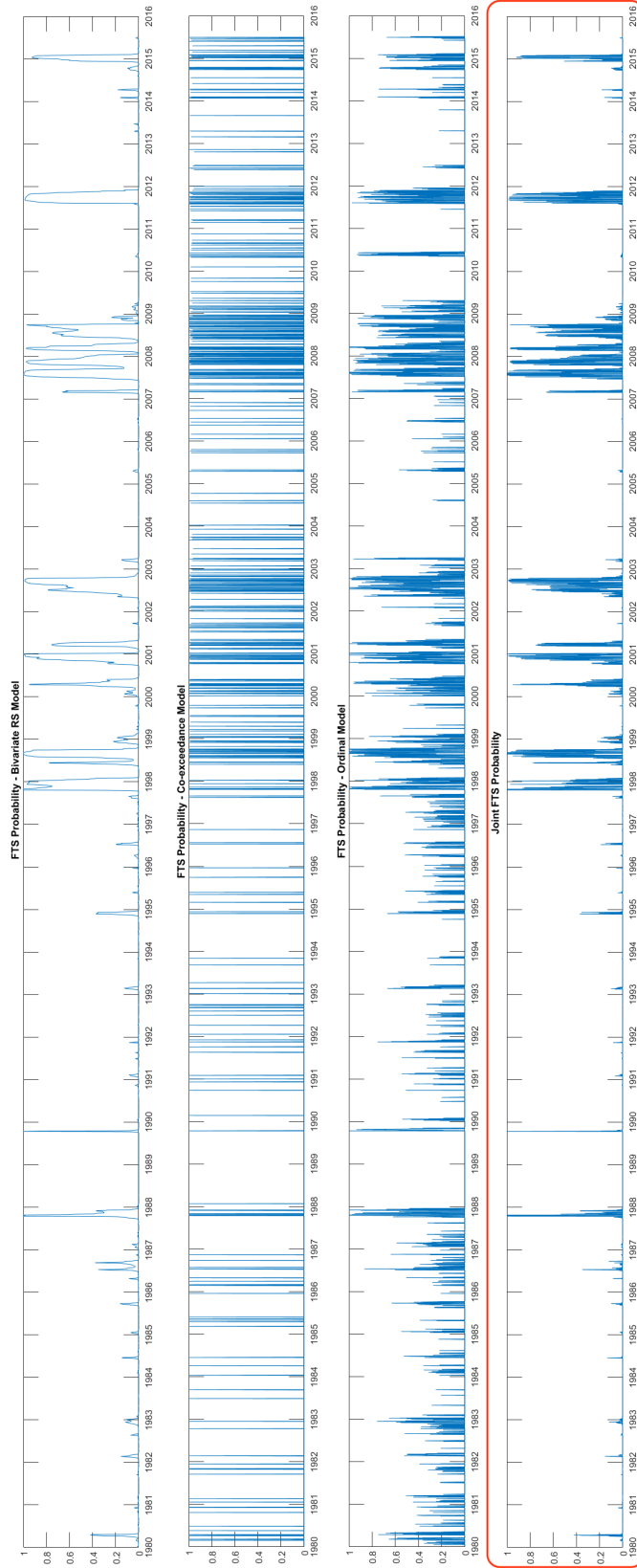


Figure 4: Return Impact before, during, and after FTS Spell

This figure plots the average return across all countries and the associated IQR before, during, and after a FTS spell for equities (Panel A), bonds (Panel B), and the difference between the two (“return impact”) (Panel C) at different stages of a FTS, including (1) over the 5 days before the start of the spell, (2) on the day right before the start of the spell, (3) on the first day of the spell, (4) over all subsequent days, except the last one, of the spell, (5) on the last day of the spell, (6) on the first day following the spell, and (7) over the 5 days following a spell.

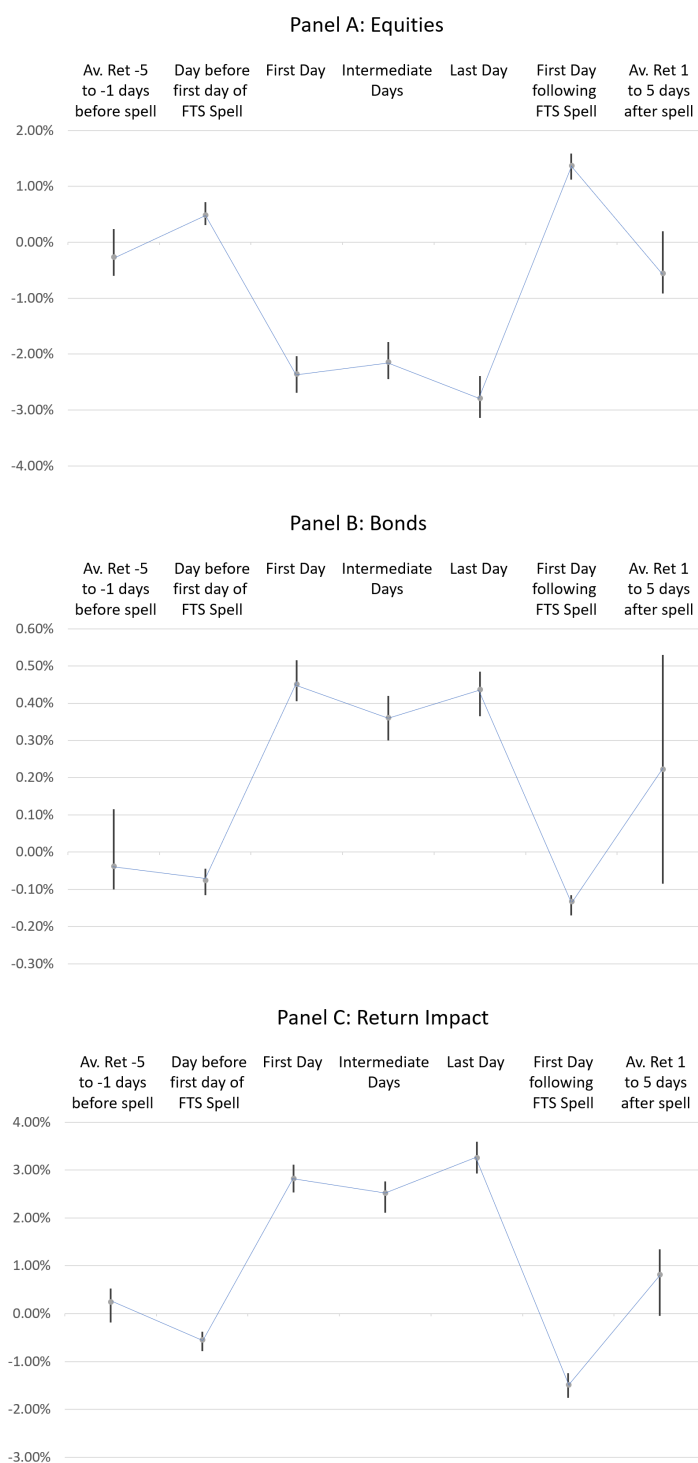


Figure 5: Global FTS Measures

This figure plots the percentage of countries in a FTS according to our benchmark model (top panel), the aggregate FTS probability from a global version of the benchmark model (middle panel), and the aggregate FTS probability for the US. A horizontal line at 50% probability is shown in all panels, representing the requirement that a global FTS occurs when at least half of the countries are in a FTS (the top panel), or the 50% threshold probability level we require for a day to be denoted a FTS (the middle and bottom panels).

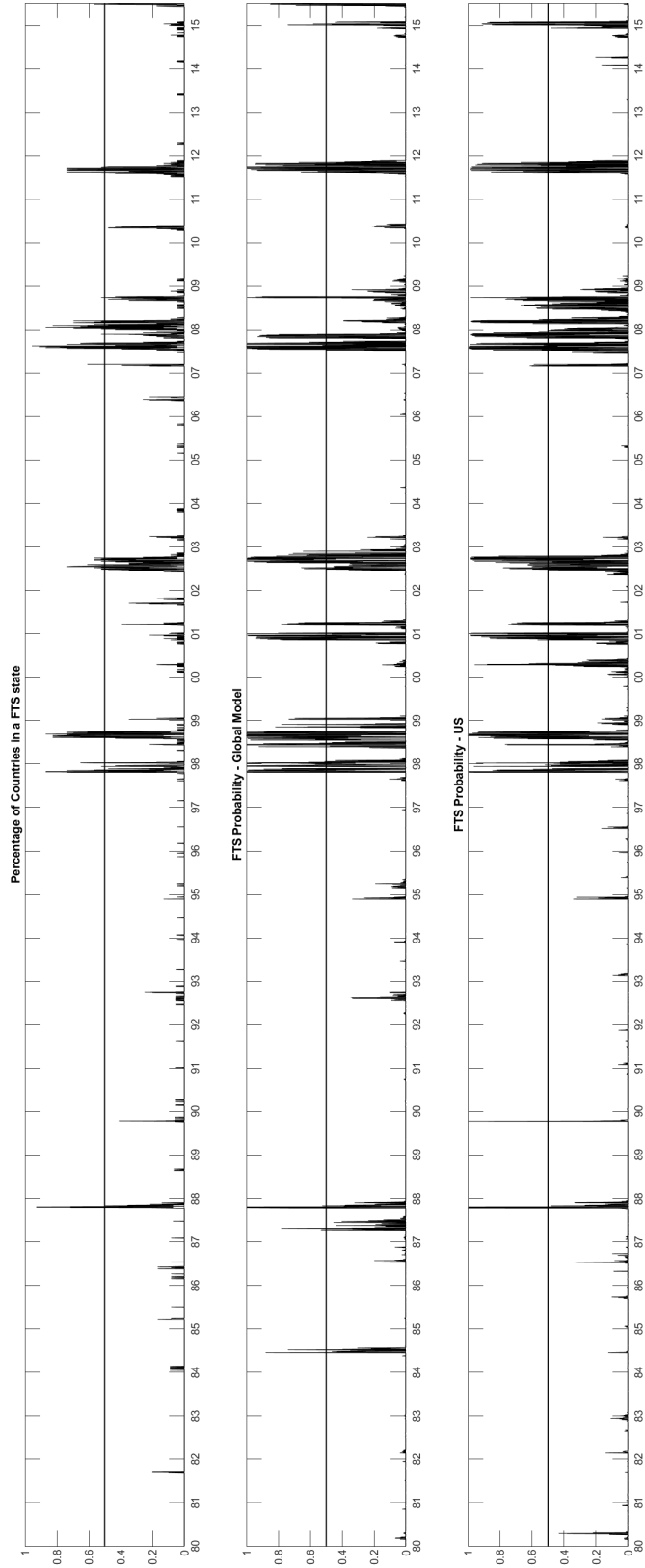
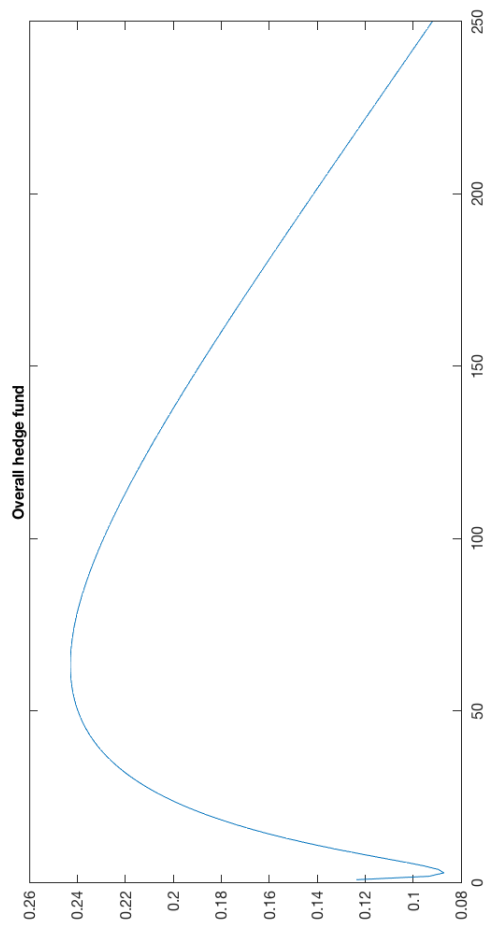


Figure 6: Time-Varying Market Exposure of the Overall Hedge Fund Index

This figure shows the market beta of the overall hedge fund index as a function of the distance to FTS. The market beta is based on the model in Equation (18), in which the market exposure depends upon the time (in days) relative to the FTS event according to a polynomial function. The coefficients of the dummy variables D_1 and D_2 are imposed to be zero if they are estimated to be insignificant. The US market return is used as the risk factor.



A Data Appendix

Table A.1: Data Sources and Availability for Variables

This table gives an overview of the variables used in this paper, the data sources or proxies, the data availability in term of countries and time period, and the data frequency. Our sample of 23 developed countries includes two countries from North-America (US, Canada (CN)), 18 European countries (Austria (OE), Belgium (BG), Czech Republic (CZ), Denmark (DK), France (FR), Finland (FN), Germany (BD), Greece (GR), Ireland (IR), Italy (IT), Netherlands (NL), Norway (NW), Poland (PO), Portugal (PT), Spain (ES), Sweden (SD), Switzerland (SW), UK), as well as Australia (AU), Japan (JP), and New-Zealand (NZ). Our sample of 25 emerging equity markets includes Bulgaria, Hungary, Romania, Russia, Slovenia, Turkey from Central East Europe; Israel; South Africa; Argentina, Brazil, Chile, Colombia, Mexico, and Peru from Latin America; and China, India, Hong Kong, Indonesia, Korea, Malaysia, Pakistan, Philippines, Singapore, Sri Lanka, and Thailand from Asia. If we refer to “All countries” in the column ‘Availability Countries’, it only concerns the developed countries. In the column ‘Availability Time Period’, we only mention the starting year, unless the data is not available until the end of the sample period, in which case the end date is also mentioned. The individual equity quality indicators include leverage, Altman z-score, gross profits to total assets, ROE and asset growth volatility.

Variables	Data Source / Proxy	Availability Countries	Availability Time Period (Start Date)	Frequency
<i>Equity data</i>				
Developed market equity indices	Datastream Total Market Indices	All countries	See Table 1 of the Online Appendix	Daily
Emerging market equity indices	Datastream Total Market Indices	All emerging countries	See Table 13 of the Online Appendix	Daily
Individual equity returns	Datastream	All countries, except for US	See Table 11 of the Online Appendix	Daily
Individual equity quality indicators	Worldscope	All countries, except for US	See Table 11 of the Online Appendix	Yearly
<i>Bond data</i>				
10-year government bond indices	Datastream 10-year Government Bond Indices	All countries	1980 (CN/JP 1984; AU 1987; NZ 1991; NW 1992)	Daily
Emerging market bond indices	JP Morgan's Emerging Local Markets Index	Israel, Hong Kong, Korea, and Singapore	See Table 13 of the Online Appendix	Daily
Emerging market bond indices	JP Morgan's Emerging Markets Bond Index	Other emerging countries, except for Slovenia	See Table 13 of the Online Appendix	Daily
Individual bond transaction data	TRACE database	US	2002-2013	Weekly
Credit ratings	S&P	US	2002-2013	Weekly
Expected default frequency	Moody's - KMV	US	2002-2013	Weekly
<i>Alternative market stress indicators</i>				
OECD Consumer Confidence	OECD	All countries, except for Norway	1980 *	Monthly
Currencies	MSCI	All countries	1980 **	Daily
TED Spread	Federal Reserve	All countries, except for IR, OE, CZ and PO	1980 ***	Daily
Gold	S&P GSCI benchmark commodity index	Global	1980	Daily
Equity implied volatility	Datastream	US, Germany, UK, Japan	US 1986; BD 1992; UK 2000; JP 1995	Daily
<i>Fund flows</i>				
Fund flows and AUM non-ETF funds	Thomson Reuters Lipper	US	1992	Weekly/Monthly
Fund flows and AUM ETF funds	Thomson Reuters Lipper	US	Equity 1996; Treasury/Corp IG 2002; Corp HY 2007	Weekly/Monthly

* JP 1982; GR 1985; ES/PT 1986; FN 1987; NZ 1988; CZ/SD 1995; PO 2001

** NZ/FN 1982; IR/GR/PT: 1987; PO 1992; CZ 1994

*** US/BD/JP/AU/NW 1986; FN 1987; DK 1988; SD/FR 1989; CN/IT/ES 1990; BG 1991; GR 1994; PT 1999; NZ 2003)

B Kernel Method for High and Low Frequency Variances and Correlations

Let $r_{e,t}$ and $r_{b,t}$ be the returns on a benchmark equity and Treasury bond index, respectively. Given any date t_0 in a sample $t = 1, \dots, T$, the kernel method calculates stock and bond return variances at the normalized date $\tau = t_0/T \in (0, 1)$ as:

$$\sigma_{i,\tau}^2 = \sum_{t=1}^T K_h(t/T - \tau) r_{i,t}^2, \quad i = e, b$$

where $K_h(z) = K(z/h)/h$ is the kernel with bandwidth $h > 0$. The weights given to individual observations depend on (1) how close in time these observations are to the time point of interest, τ , (2) the specific form of the kernel, and (3) the chosen bandwidth. In our applications, we use a backward looking Gaussian kernel:

$$K(z) = \begin{cases} \frac{\psi}{\sqrt{2\pi}} \exp\left(-\frac{z^2}{2}\right) & \text{if } z \leq \frac{t-k}{T} \\ 0 & \text{if } \tau > \frac{t-k}{T} \end{cases}$$

with ψ a scaling factor that makes the weights sum up to a 100%, and k the number of past days (including the current) that are excluded from the variance calculation. The bandwidth can be viewed as the standard deviation of the distribution, and determines how much weight is given to returns either in the distant past or future. The higher the bandwidth, the more past observations are taken into account. When measuring the long-run component of volatility, we set the bandwidth to 360 days ($h = 360$) and exclude to last 5 days ($k = 5$) to avoid contamination by recent FTS events. The bandwidth of 360 days was chosen for the variances to reflect macro-economic cyclical variation; it implies that the kernel's half-life corresponds roughly to the average length of US postwar recessions, which is around 11 months. We calculate time-varying covariances in a similar way, i.e. by applying the same weighting scheme to the cross-product of the stock and bond returns. The long-run correlation is then simply the long-run covariance divided by the cross-product of the long-run stock and bond volatilities.

C Conditional Volatilities

Appendix C shows the expressions for the conditional volatilities for respectively stock returns (see Section C.1) and bond returns (see Section C.2).

C.1 Equity Volatilities

There are only three possible regimes for the conditional equity volatilities, because a FTS regime cannot occur when the equity regime variable is in the low variance state. The conditional or state-dependent equity volatilities are given by:

$$\begin{aligned}
Var(r_{e,t+1} | S_t^e = 0, S_t^{FTS} = 0; I_t) &= \alpha_1^2 P^e (1 - P^e) + 2\alpha_1 \alpha_{FTS} (1 + v_e) P^e (1 - P^e) A \\
&\quad + \alpha_{FTS}^2 (1 + v_e)^2 (1 - P^e) A (1 - (1 - P^e) A) \\
&\quad + m_{e,t} (a_e P^e + b_e (1 - P^e)) \\
Var(r_{e,t+1} | S_t^e = 1, S_t^{FTS} = 0; I_t) &= \alpha_2^2 Q^e (1 - Q^e) - 2\alpha_2 \alpha_{FTS} (1 + v_e) Q^e (1 - Q^e) A \\
&\quad + \alpha_{FTS}^2 (1 + v_e)^2 Q^e A (1 - Q^e A) \\
&\quad + m_{e,t} (a_e (1 - Q^e) + b_e Q^e) \\
Var(r_{e,t+1} | S_t^e = 1, S_t^{FTS} = 1; I_t) &= \alpha_2^2 Q^e (1 - Q^e) + 2\alpha_2 (\alpha_{FTS} v_e - \alpha_{FTS} v_e) (1 - Q^e) Q^e B \\
&\quad + (\alpha_{FTS}^2 v_e^2 + \alpha_{FTS}^2) Q^e B (1 - Q^e B) \\
&\quad + m_{e,t} (a_e (1 - Q^e) + b_e Q^e).
\end{aligned}$$

C.2 Bond Volatilities

For bond returns, there are six regime-dependent conditional volatilities, because a FTS regime can occur in either high or low bond volatility regimes. The various conditional or state-dependent bond volatilities are given by:

$$\begin{aligned}
Var(r_{b,t+1} | S_t^e = 0, S_t^b = 0, S_t^{FTS} = 0; I_t) &= \gamma_1^2 P^b (1 - P^b) \\
&\quad + \gamma_{FTS}^2 (1 + v_b)^2 (1 - P^e) A (1 - (1 - P^e) A) \\
&\quad + m_{b,t} [a_b P^b + b_b (1 - P^b)] \\
Var(r_{b,t+1} | S_t^e = 0, S_t^b = 1, S_t^{FTS} = 0; I_t) &= \gamma_2^2 Q^b (1 - Q^b) \\
&\quad + \gamma_{FTS}^2 (1 + v_b)^2 (1 - P^e) A (1 - (1 - P^e) A) \\
&\quad + m_{b,t} [a_b (1 - Q^b) + b_b Q^b] \\
Var(r_{b,t+1} | S_t^e = 1, S_t^b = 0, S_t^{FTS} = 0; I_t) &= \gamma_1^2 P^b (1 - P^b) \\
&\quad + \gamma_{FTS}^2 (1 + v_b)^2 Q^e A (1 - Q^e A) \\
&\quad + m_{b,t} [a_b P^b + b_b (1 - P^b)] \\
Var(r_{b,t+1} | S_t^e = 1, S_t^b = 0, S_t^{FTS} = 1; I_t) &= \gamma_1^2 P^b (1 - P^b) \\
&\quad + (\gamma_{FTS}^2 v_b^2 + \gamma_{FTS}^2) Q^e B (1 - Q^e B) \\
&\quad + m_{b,t} [a_b P^b + b_b (1 - P^b)] \\
Var(r_{b,t+1} | S_t^e = 1, S_t^b = 1, S_t^{FTS} = 0; I_t) &= \gamma_2^2 Q^b (1 - Q^b) \\
&\quad + \gamma_{FTS}^2 (1 + v_b)^2 Q^e A (1 - Q^e A) \\
&\quad + m_{b,t} [a_b (1 - Q^b) + b_b Q^b] \\
Var(r_{b,t+1} | S_t^e = 1, S_t^b = 1, S_t^{FTS} = 1; I_t) &= \gamma_2^2 Q^b (1 - Q^b) \\
&\quad + (\gamma_{FTS}^2 v_b^2 + \gamma_{FTS}^2) Q^e B (1 - Q^e B) \\
&\quad + m_{b,t} [a_b (1 - Q^b) + b_b Q^b].
\end{aligned}$$

D Calculation of Joint FTS Dummy

Assume $\{X_i, i = 1, 2, \dots, n\}$ is a sequence of Bernoulli random variables, where

$$P\{X_i = 0\} = q_i, \quad P\{X_i = 1\} = p_i$$

where $0 < p_i = 1 - q_i < 1$. The multivariate Bernoulli distribution is then represented by

$$p_{k_1, k_2, \dots, k_n} := P\{X_1 = k_1, X_2 = k_2, \dots, X_n = k_n\}$$

where $k_i \in \{0, 1\}$ and $i = 1, 2, \dots, n$. Let $\mathbf{p}^{(n)}$ be a vector containing the probabilities of the 2^n possible combinations of the n individual binary indicators. To define $\mathbf{p}^{(n)}$, we write k (with $1 \leq k \leq 2^n$) as a binary expansion:

$$k = 1 + \sum_{i=1}^n k_i 2^{i-1}$$

where $k_i \in \{0, 1\}$. This expansion induces a 1-1 correspondence

$$k \leftrightarrow (k_1, k_2, \dots, k_n)$$

so that

$$p_k^{(n)} = p_{k_1, k_2, \dots, k_n}, \quad 1 \leq k \leq 2^n$$

Teugels (1990) shows that $\mathbf{p}^{(n)}$ can be calculated as:

$$\mathbf{p}^{(n)} = \begin{bmatrix} 1 & 1 \\ -p_n & q_n \end{bmatrix} \otimes \begin{bmatrix} 1 & 1 \\ -p_{n-1} & q_{n-1} \end{bmatrix} \otimes \dots \otimes \begin{bmatrix} 1 & 1 \\ -p_1 & q_1 \end{bmatrix} \sigma^{(n)}$$

where $\sigma^{(n)} = (\sigma_1^{(n)}, \sigma_2^{(n)}, \dots, \sigma_{2^n}^{(n)})^T$ is the vector of central moments than can be calculated as

$$\sigma_k^{(n)} = E \left[\prod_{i=1}^n (X_i - p_i)^{k_i} \right]$$

In our application, $n = 3$, with p_i corresponding to the FTS probability on a particular day based on the RS model ($i = 1$), the threshold model ($i = 2$), and the ordinal model ($i = 3$). The Bernoulli variables X_i , $i = 1, \dots, 3$ are set to 1 when $p_i > 0.5$, and zero otherwise. The vector of central moments $\sigma_k^{(n)}$ is estimated over the full sample. Our joint FTS dummy is set to one when on that particular day, the probability that the RS model and at least one of the other two models signal FTS is larger than 50%, i.e. when $p_{1,1,1} + p_{1,1,0} > 0.5$ or $p_{1,1,1} + p_{1,0,1} > 0.5$.