



**FACULTEIT ECONOMIE  
EN BEDRIJFSKUNDE**

**HOVENIERSBERG 24**

**B-9000 GENT**

**Tel. : 32 - (0)9 – 264.34.61**

**Fax. : 32 - (0)9 – 264.35.92**

## **WORKING PAPER**

### **Initial returns: underpricing or overvaluation ? Evidence from Easdaq and EuroNM**

**Wouter DE MAESENEIRE<sup>1</sup>**

**Sophie MANIGART<sup>2</sup>**

March 2002

2002/139

---

<sup>1</sup> Department of Corporate Finance, Ghent University.

<sup>2</sup> Department of Corporate Finance, Ghent University.

**Correspondence to:** Wouter De Maeseneire, Department of Corporate Finance, Faculty of Economics and Business Administration, Ghent University, Kuiperskaai 55E, 9000 Gent, BELGIUM; E-mail: [Wouter.Demaeseneire@rug.ac.be](mailto:Wouter.Demaeseneire@rug.ac.be); tel: +32-9-264 35 06.

This paper has benefited a lot from comments of AFFI 2001 (Namûr, Belgium), EFMA 2001 (Lugano, Switzerland) and Ghent University- Working Paper Forum participants.

## **Abstract**

This paper investigates initial returns of Easdaq and EuroNM IPOs and explains part of these returns. Average first day return of 300 IPOs introduced before October 1, 1999, is 36.01 %. The most significant explanatory variable is the mean return of previous IPOs, indicating that high initial returns are caused by too high first trading prices due to investor overreaction and positive market sentiment. Riskier IPOs present substantially higher initial returns. Venture capitalists are not able to significantly reduce initial returns, nor does size of the IPO influence initial returns. Our results indicate that high initial returns are caused by underpricing as well as overvaluation.

## **1. Introduction**

Europe has long been lacking capital markets on which young, high risk companies can be listed. In some countries, secondary or third-tier stock markets existed in the eighties and early nineties, but often there was little difference in listing requirements between the first and the secondary markets. This led to the perception that secondary or third-tier markets were for companies that ‘failed’ to be listed on the first market. As a consequence, there was little interest of companies and of investors in these secondary markets, leading to a lack of liquidity and little or no analyst support. An ambitious young, innovative European company, wishing to raise capital on a public market, therefore only had one option then: getting a listing on Nasdaq.

In 1996, two initiatives with a pan-European scope were launched almost at the same time, in order to remedy to this problem: Easdaq, a pan-European stock market modeled after Nasdaq, and EuroNM, a pan-European grouping of nationally regulated secondary stock markets. The aim of both markets was quite similar, namely to give listing opportunities to companies that otherwise either could not get access to public stock markets, or had to be listed on Nasdaq. This was considered important by policymakers and by the whole financial and business community at that time. It was thought that this would help to fill the equity gap for companies that could establish the backbone of the future economy in Europe.

In this paper, we briefly present these new stock markets, in terms of number of IPOs, money raised at IPO, and overall return to the investors (section 2). Thereafter, we more extensively investigate the initial returns generated by 300 IPOs listed on these markets before October 1, 1999. The fact that initial returns are higher than can be expected in efficient markets, is well documented on numerous stock markets around the world. We show that, on the first trading day, the return (corrected for the stock market evolution on that day) is on average 15,8% on Easdaq and 38,7% on Euro.NM, and persists during a twenty day trading window (section 3). Thereafter, we explain determinants of these initial returns. Hypotheses relating to underpricing theories and to investor sentiment theories are presented and tested (section 4 and 5). We combine both theories by simultaneously testing the effect of riskiness and certification of an IPO on the one hand, and investor and market sentiment (fads-overvaluation theories) on the other hand, on initial returns. By doing this we add to the

literature on underpricing. For example, we explicitly link the initial return of an IPO to initial returns generated by recent preceding IPOs. Conclusions are drawn in section 6.

## **2. Easdaq and EuroNM**

Easdaq is a pan-European electronic stock market that has been founded in 1996 by more than 60 American and European financial institutions (including investment banks, stock dealers, institutional investors, venture capitalists, Nasdaq,...). Despite the fact that Easdaq is listing companies from different countries, it operates in one legal system, there is a single supervising institution and one trading and clearing system which is accessible from all over Europe. The creation of such a capital market would have been impossible without the introduction of a number of European Directives, meant to ameliorate the integration of financial markets in Europe. The most important were the Investment Services Directive, the Second Bank Directive and the Prospectus Directive. Easdaq aims to attract international oriented growth and high-tech companies. Its trading rules and trading system are very similar to Nasdaq's. The market structure is price-driven: market makers have the obligation to continuously quote bid and ask prices and to deal at these quotes. The first listing took place on November 27, 1996.

EuroNM is a pan-European network of regulated national markets dedicated to growth companies, each governed by its home country requirements. It is a European Economic Interest Grouping and its members currently include the ParisBourse (Le Nouveau Marché, first listing March 20 1996), the Deutsche Börse (Neuer Markt, first listing March 10 1997), the Amsterdam Exchanges (NMAX, first listing March 25 1997), the Brussels Exchanges (EuroNM Belgium, first listing April 11 1997) and the Italian Exchange (Nuovo Mercato, first listing June 17 1999). EuroNM will cease to exist as from December 31 2000. Because of<sup>1</sup> the creation of Euronext, stocks listed on NMAX, Nouveau Marché and EuroNM Belgium will from that date on be trading on that new market, while Neuer Markt and Nuovo Mercato will continue to exist as national markets for growth stocks.

The EuroNM market structure is a combination of the price driven and the order driven system. Detailed data about the number of transactions and the order volumes are not available except for Le Nouveau Marché. However, it seems that these markets are mainly

order driven. On Le Nouveau Marché 11.2 % of the transactions went via the market makers, but this represented 26.9 % of the total volume (mean values for the first 9 months of 1999; source: ParisBourse). This implies that the transaction size in the price driven system is substantially larger, indicating that institutional investors prefer dealing via this latter channel.

The admission criteria on these markets for young growth enterprises are less severe than on more traditional capital markets; for example potential new listed companies need not be profitable yet. Requirements concerning equity and total assets are limited. A lot of differences can be observed between the minimum criteria on the five segments of EuroNM<sup>1</sup>. On Easdaq, admission criteria are more difficult to meet than on EuroNM. For example, requirements concerning equity and market capitalisation at IPO, and corporate governance principles as well as accounting rules are more stringent for companies seeking a listing on Easdaq.

Figure A (appendix) shows the total number of listings on Easdaq and EuroNM between January 1996 and October 1999; figure B (appendix) shows the number of listings on the main segments of EuroNM, Le Nouveau Marché and the Neuer Markt<sup>2</sup>. The growth of EuroNM is evident, with especially the Neuer Markt expanding at a fast rate.

Tables A and B (appendix) show the risk-reward tradeoff for investors and the correlation between returns on these markets and other investment alternatives, starting at the launch of these stock exchanges till 1999. Returns since the existence of the markets show that investors have been rewarded very well for investments on Easdaq and EuroNM. However, the EuroNM segments present considerable differences. In general an investment on the new European stock markets, especially on Easdaq and Neuer Markt, resulted in higher returns than an investment in more traditional blue chips (Euro Stoxx 50) but also yielded a higher risk. The figures are quite comparable to those found for Nasdaq. Correlations between the returns of the different market indices are all positive and significant. The new stock markets clearly make markets more complete and offer investment opportunities that differ in their risk return profile, compared to what the large European companies offer or compared to Nasdaq.

We have studied the initial returns of 300 of the 307 IPOs (but not dual listings) traded before October 1 1999, excluding 7 IPOs for which there is insufficient IPO information. Reasons

not to include some cases were for example inconsistency between data from EuroNM or Easdaq and data from Datastream. Main characteristics of the IPOs in this study, including market capitalisation, amount of funds raised and number of IPOs is given in table 1.

**[Insert Table 1 about here]**

Firms listed on Easdaq have a larger average market capitalisation (median value: 97.24 million EUR) than those on EuroNM (median value: 69.02). The difference in the amount of funds raised is even larger: 32.69 versus 19.10 million EUR (median values). There are large (and statistically significant) differences within EuroNM: the market capitalisation at IPO on Neuer Markt (median value: 111.98 million EUR) is larger than on Easdaq (97.24) and more than twice the value for NMAX (49.61) which in turn is more than triple the value for EuroNM Belgium (15.65). Market capitalisation of the median IPO on Nouveau Marché is 29.44 million EUR.

The amounts of funds raised at IPO are comparable on Easdaq and Neuer Markt (median values: 32.69 and 32.12 million EUR). This is a multiple of the value for NMAX (13.20) and about four times higher than for Le Nouveau Marché (7.46) and for EuroNM Belgium (8.75). For all markets we observe that the mean value for market values as well as for the amount of funds raised is higher than the median value which indicates that some listed companies have very high market values or funds raised. These statistics show that Le Nouveau Marché and EuroNM Belgium attract only small companies that raise a limited amount of funds whereas Easdaq and the Neuer Markt list significantly larger companies raising far more funds. NMAX is situated in between.

### **3. Initial returns on Easdaq and EuroNM**

In the remainder of this paper, initial returns of the IPOs and their determinants will be studied. Initial returns are the returns realised by an investor who acquires shares at the offering price, and who sells them on the first trading days on the stock market. Initial return is measured as the relative difference between the first trading prices and the issue price.

Often this initial return is adjusted for the overall market evolution by subtracting the return of the market index over the same period from the initial return of the IPO. Miller and Reilly (1987), however proved that the conclusions on underpricing do not differ a lot when using another time period or when not adjusting for the market evolution (possibly risk-adjusted), because of the very short time interval in which initial returns are measured. It is well documented by numerous empirical studies that initial returns at IPO are larger than returns on comparable markets (appendix C). This fact, commonly referred to as ‘underpricing’, is supported on a world-wide basis and over varying periods of time<sup>3</sup>.

This consistent finding is puzzling: why are companies raising equity capital at issue prices below the price investors are willing to pay ? This way, the capital operation generates less funds than it potentially could for either entrepreneurs or companies. Initial shareholders ‘leave money on the table’, so underpricing is a considerable cost for the company and/or the old shareholders and new investors earn abnormally high returns at the expense of old ones.

There are two explanations for these abnormal initial returns. The most widespread one is that IPOs are introduced on the market at a price lower than their true value: this is the underpricing phenomenon<sup>4</sup>. It is often assumed that the high initial returns are the result of deliberate underpricing by the company or by the investment bank managing the introduction. The constatation that no systematic, abnormal returns are found immediately after trading begins is seen as support for underpricing theories. Therefore it is supposed that in an efficient stock market the ‘incorrect’ issue price of the IPO is adjusted to its fair value.

However, an alternative explanation is that IPOs are introduced at a fair price but that investors overprice the stocks when trading begins (Aggarwal and Rivoli, 1990). Aggarwal and Rivoli (1990), Ritter (1991) and Loughran and Ritter (1993, 1995) showed that IPOs underperform in the long run (2-3 years) in comparison to the market. This lends support to the second view that the first trading prices are actually too high and that there is no underpricing at IPO. Of course, a combination of both theories is possible too. Theoretical explanations supporting one of these theories will not be given here; this study intends to empirically test which theory - underpricing, overvaluation or a combination - can explain the high initial returns.

Table 2 reports initial returns on Easdaq and different segments of EuroNM.

[ Insert Table 2 about here]

300 of all 307 IPOs on Easdaq and EuroNM that occurred before October 1 1999 are included. Information on the issue price is gathered from respectively Easdaq Primary Market Statistics and EuroNM Market Statistics; stock prices come from Datastream. The cumulative initial return for IPO  $i$  on trading day  $t$  is computed as:

$$\text{Cumulative initial return}_{i,t} = (\text{stock price}_{i,t} - \text{issue price}_i) / \text{issue price}_i$$

with  $\text{stock price}_{i,t}$  = stock price at the end of trading day  $t$  of IPO  $i$

$\text{issue price}_i$  = issue price of IPO  $i$

The cumulative market return during the same period of time is calculated for every IPO as to adjust the initial returns for the market evolution:

$$\text{Cumulative market return}_{i,t} = (\text{index}_{i,t} - \text{index}_{i,0}) / \text{index}_{i,0}$$

with  $\text{index}_{i,t}$  = value of the price index<sup>5</sup> on trading day  $t$  for IPO  $i$

$\text{index}_{i,0}$  = value of the price index on the day before the first trading day of IPO  $i$

We use the Easdaq All Share index for IPOs on Easdaq and the EuroNM All Share index for IPOs on EuroNM. For the latter, it would have been possible to use the corresponding market segment indices. This was not done for two reasons. First, EuroNM presents itself as one homogeneous market. Second, doing this would lead to problems in the early phase of existence of these markets.

Initial return on trading day  $t$  for IPO  $i$  is then calculated as:

$$\begin{aligned} \text{Initial return}_{i,t} &= \text{Cumulative initial return}_{i,t} - \text{Cumulative market return}_{i,t} \\ &= (\text{stock price}_{i,t} - \text{issue price}_i) / \text{issue price}_i - \\ &\quad (\text{index}_{i,t} - \text{index}_{i,0}) / \text{index}_{i,0} \end{aligned}$$

Figure 1 reports the cumulative median initial returns on Easdaq and EuroNM during the first twenty trading days, corrected for returns in the market, while table 2 gives summary statistics of the initial returns on the first trading day.

Table 2 clearly shows that the initial returns are positive both on Easdaq (significant at the 0.059 level, two-tailed t-test) and EuroNM (significant at the 0.000 level). An investor who would have invested an equal amount in all IPOs and sold all shares on the first trading day,



would have realised a return that outperformed the relevant market index by 15.87 % on Easdaq and 38.67 % on EuroNM. Solely investing in Neuer Markt IPOs was the most rewarding investment strategy: the mean initial return is 58.29 % above the EuroNM index. The lowest initial returns are found on EuroNM Belgium, with a negative median return of 2.43 % and a mean return of -0.10 % (not significantly different from zero). The large differences between means and medians, the high standard deviations and the huge range between minimum and maximum initial returns on all markets show, however, that there are large differences between the IPOs. On the Neuer Markt, for example, the lowest initial return was -17.20 % (Edel Music), while the highest return on the first trading day was 403 % (Drillisch, a telecom services company), which means that the stock price of Drillisch at the end of the first trading day was more than five times higher than its issue price.

**[ Insert figure 1 about here]**

Figure 1 further shows that the high median initial returns do not immediately disappear, especially not on the Neuer Markt and NMAX. Initial returns remain positive on Easdaq during the first twenty trading days, although not as high as on the first trading day. On EuroNM Belgium, where the initial return on the first trading day was not positive on average, the returns remain negative.

#### **4. Determinants of initial returns**

Variations in initial returns may be explained by characteristics of the particular stock and by the state of the stock market at the time of the IPO. Empirical literature on underpricing guided the selection of relevant variables included in multivariate models in this study. Some variables that previous studies reported as being important were omitted, however, due to lack of data (e.g. the percentage of equity retained by the original shareholders, investment bank and auditor reputation, sales, age of the company) or due to the fact that they are irrelevant in the context of this study. For example, it is well known that IPOs on a best efforts basis are more underpriced than those on a firm commitment basis (Ritter, 1987; Chalk and Peavy, 1987; Kumer and Tsetsekos, 1993), and that there is more underpricing when the issue price is set at a fixed price than resulting from a bookbuilding procedure (e.g. Buijs and Eijgenhuijsen, 1992; Bergström, Fredrikson, Högfeldt and Lind, 1995). However, almost every IPO on Easdaq and EuroNM is introduced via a firm commitment contract and issue

price is set using bookbuilding procedures. All data come from Easdaq and EuroNM Market Statistics, websites of the stock markets and of the listed companies and issue prospectuses.

The dependent variable is the market-corrected initial return on the first trading day. Independent variables are grouped in four constructs: market sentiment at the time of the IPO, market sentiment for this particular IPO, risk of the IPO and certification. Two control variables are included. Descriptive statistics of all independent variables are given in table 3.

## MARKET SENTIMENT AT IPO TIME

We hypothesize that a positive market sentiment leads to higher initial returns, consistent with the fads-overvaluation hypothesis<sup>6</sup> (Aggarwal and Rivoli, 1990; Loughran, Ritter, 1993). Optimistic investors are prepared to pay more than the fair value for an IPO and so create fads in the market and overvalue IPOs once they are traded, which will result in bad long term performance of IPOs. Brav and Gompers (1995) provide evidence that investor sentiment is a possible explanation for the severe underperformance of IPOs.

This optimism and overvaluation can be induced by initial returns on recent previous IPOs or by a positive market sentiment in general. The more positive the overall market sentiment is just before or at the IPO, the higher the expected initial return will be. Following five variables are indicators of investor sentiment on the stock market in general or for the IPO market in particular.

**Return Spec:** return of the specific market index; return of the index of the stock market (segment) on which the listing took place, in the month of introduction of the IPO. The mean value is 1.62 %, it varies between -19.24 % and 51.21 %. The return of the IPO on the first trading day is not included in this variable. On the following trading days, the return on the IPO contributes to the return of the stock market where it is quoted.

**Return Gen:** return of a general market index; return of the EuroStoxx 50 in the month of the issue. The mean value is 1.61 %, ranging between -16.61 % and 11.46 %.

- LN New IPO: natural logarithm<sup>7</sup> of the number of new IPOs on the particular market ( segment) in the month of the issue. This variable varies between 0 and 3.09, with a mean value of 1.78, meaning that during the month in which the IPO took place, the number of new IPOs varies between 1 and 22 and is on average 5.93.
- New IPO %: relative increase in the number of listings; equals the number of new listings on that particular stock market in the month of the issue divided by the total number of listings at the end of the previous month. Mean value is 15.21 %, minimum is 0.25 % and maximum is 66.67 %.
- IR Last IPOs: mean value of the level of initial returns of the three previous IPOs on that capital market. This was not computed for NMAX and EuroNM Belgium because of the too small number of listings. This varies between -12.20 % and 254.21 %, with a mean of 38.82 %.

#### SENTIMENT FOR THIS PARTICULAR IPO

Empirical studies (e.g. Beatty and Ritter, 1986; Koh and Walter, 1989; Levis, 1990; Cherubini and Ratti, 1992; Suchard and Woo, 1993) found a positive relationship between the oversubscription rate and the level of initial returns. When the demand is substantially higher than the supply of a particular stock, it is logical that the price of the scarce good, in casu the stock, will rise. We therefore hypothesize that the higher the interest for a new issue, the more investors are prepared to pay once the stock is listed and the higher initial returns therefore will be.

- Overscription: (only available for Le Nouveau Marché) ratio of the number of shares requested in surplus of the number of shares offered to the number of shares offered. The least succesful IPO was not oversubscribed, while the most succesful one was oversubscribed 139 times. Mean oversubscription was about 15 times.

## COMPANY RISK

It is hypothesized that more risky IPOs will show higher initial returns. In order to compensate investors for the risk, entrepreneurs may be willing to introduce the shares at a lower price than their intrinsic value. The higher the volatility of the returns after the IPO, the higher the risk and the higher the expected initial returns will be (Miller and Reilly, 1987; McGuinness, 1992). On the other hand, a high market capitalisation, funds raised and issue price are associated with a (relatively) large and more mature company implying a lower risk, everything else equal (Ritter, 1984; Beatty and Ritter, 1986; Ibbotson, Ritter and Sindelar, 1988, Levis, 1990; Hunt-McCool, Koh and Francis, 1996). Variables used in other empirical work, but not used in our study (due to data unavailability) include book value of equity (and book to market ratio), number of risk factors, sales, profits, total assets, percentage equity retained by initial shareholders, age of the company,... (e.g. Logue, 1973; Ritter, 1984; Beatty and Ritter, 1986; Ibbotson, Ritter and Sindelar, 1988; Muscarella and Vetsuypens, 1989; Rees, 1992; Ljunqvist, 1993; Zackrisson, 1994; Hunt-McCool, Koh and Francis, 1996).

**Volatility:** standard deviation of the daily returns of the stock price, calculated during the first twenty market days. This is an ex-post indicator of the riskiness of the IPO (Miller and Reilly, 1987; McGuinness, 1992). It ranges between 0.47 % and 21.12 % and the mean value is 4.92 %.

**ICT:** dummy indicating whether the IPO is a company active in software, IT-services, internet business or telecommunications. These companies present more uncertainty and higher risk: Smit and Trigeorgis (1999) show that most of the market value of these companies is based on their intangibles and on the strategic value of their growth opportunities and that this industry involves more unexpected technological revolutions and competitive moves. This dummy variable is an ex-ante indicator of risk. 42 % of all IPOs on Easdaq and EuroNM are ICT companies.

**LN Market Cap:** natural logarithm of the market capitalisation of the company at IPO time (Levis, 1990). Mean, minimum and maximum values of 4.27, 1.61 and 7.28 are equal to a market capitalisation of respectively 71.52, 5.00 and 1450.99 million EUR.

LN Funds raised: natural logarithm of the amount of funds raised at IPO time, also termed IPO volume, as an absolute indicator of the size of the IPO (Ritter, 1984; Beatty and Ritter, 1986; Levis, 1990; McCool, Koh and Francis, 1996). Mean, minimum and maximum values of 3.03, 0.74 and 5.99 correspond to an amount of funds raised of respectively 20.70, 2.10 and 399.42 million EUR.

LN Issue price: natural logarithm of the price in EUR at which investors can subscribe to the IPO (Ibbotson, Ritter and Sindelar, 1988<sup>8</sup> and Hunt-McCool, Koh and Francis, 1996). Mean value is 2.80, corresponding to an average issue price of 16.44 EUR; minimum and maximum are -1.06 and 5.59, corresponding to issue prices of 0.35 EUR and 267.74 EUR.

## CERTIFICATION OF THE IPO

A negative relation between certification and initial return (underpricing) is hypothesized, as certification mitigates information asymmetries. VC-backed IPOs are certified by a venture capitalist, who gives a strong positive signal and thus is able to reduce underpricing (Barry, Peavy, Muscarella, and Vetsuypens, 1990; Bergström, Högfeldt and Anders, 1994). Empirical literature also tests for other certification variables, like investment bank and auditor reputation, number of financial intermediaries, the choice of the trading system, method of introduction (firm commitment or best effort) (Booth and Smith, 1986; Ritter, 1987; Balver, McDonald and Miller, 1988; Johnson and Miller, 1988; Carter and Manaster, 1990; Rees, 1992; Affleck-Graves, Hegde, Miller and Reilly, 1993). Due to lack of data we did not investigate the relation between initial returns and other certification variables than certification by a venture capitalist.

Venture capital: dummy variable indicating whether the company was venture capital backed or not when going to the market (Barry, Peavy, Muscarella and Vetsuypens, 1990; Megginson and Weiss, 1991; Bergström, Högfeldt and Anders, 1994). 43 % of all IPOs on Easdaq and EuroNM are venture backed.

## CONTROL VARIABLES

Dummy control variables are added to the model in order to control for some important aspects.

Nouveau Marché: dummy indicating whether the IPO took place on Le Nouveau Marché or not. 31 % of the IPOs in our study are listed on Le Nouveau Marché.

Easdaq: dummy indicating whether the IPO took place on Easdaq or not. 12 % of the IPOs in our study are listed on Easdaq.

Adding these market related control variables in the multiple regressions sets the Neuer Markt (the largest market in our study) as base case and compares the initial returns on Easdaq and Le Nouveau Marché with those on Neuer Markt, everything else equal.

**[ Insert Table 3 about here]**

## 5. Results

In table 4a correlations (together with their level of significance and number of cases) between the dependent variable ‘initial return’ and the independent variables are presented<sup>9</sup>.

The initial return is significantly and positively correlated with two indicators of market sentiment at IPO time: the return on the specific IPO market and the mean initial returns of the three previous IPOs on that market. The correlation with the return of Euro Stoxx 50 (Return Gen) is positive, but not significant, while it is negative (but not significantly so and almost equal to zero) with the absolute and relative number of new IPOs. It thus seems that buoyant stock markets and not the number of IPOs drive up initial returns.

The oversubscription rate, only available for Le Nouveau Marché, is significantly and positively correlated with the initial returns as expected. When the demand for a particular offering is high, the initial return will also be high.

Some indicators of company risk are significantly correlated with the initial return. The higher the ex-post volatility of the return is, the larger the initial return, as expected. However, contrary to expectations, a larger - and thus less risky - company also experiences larger initial returns. Indeed, the correlation between initial returns and both measures of company size (funds raised and market capitalisation) is significant and positive. This finding, however, should be interpreted with caution. Further examination of the correlation matrix, combined with our previous findings, shows that the largest companies are found on the Neuer Markt, where the largest initial returns occur. Further multivariate analyses are needed in order to find the true relationship between firm size and initial returns. The other risk indicators are not correlated with initial returns.

Table 4b reports differences in initial returns on the first trading day for the dummy variables<sup>10</sup>.

It is clear that ICT companies have much higher initial returns than non-ICT companies: their return on the first trading day is twice as high, as expected.

Contrary to findings in the US (Barry, Peavy, Muscarella and Vetsuypens, 1990; Megginson and Weiss, 1991) and to our hypothesis, certification by a venture capital company has no statistically significant effect on the initial return.

**[ Insert table 4a about here]**

**[ Insert table 4b about here]**

Initial returns are substantially and significantly lower on Easdaq and Nouveau Marché (control variables) as compared to those on Neuer Markt.

Cross-section OLS multiple regression analyses are performed with initial return on the first trading day<sup>11</sup> as dependent variable, for the whole sample and for two subsamples: one with all Neuer Markt IPOs and one with Le Nouveau Marché IPOs. White heteroskedasticity consistent standard errors are used. Results are presented in tables 5a and 5b. LN funds raised is used as an indicator of company size in table 5a and LN market capitalisation in table 5b, because these two variables are highly intercorrelated. Results of both sets of regressions are very similar<sup>12</sup>. Correlations between other independent variables are within acceptable limits<sup>13</sup>.

[ Insert table 5a about here]

[ Insert table 5b about here]

The predictive power of the regressions is high (here reported for table 5a): the adjusted  $R^2$  is 30.4 % for the overall sample, 24.9 % for the Neuer Markt subsample and 49.4 % for Le Nouveau Marché subsample<sup>14</sup>. The variables explain a significant amount of variation in the initial returns; moreover the model is stable.

Some coefficients of market sentiment variables are significant. For the whole sample, the initial return of the three previous IPOs has the strongest predictive power for the initial return of subsequent IPOs. If underpricing was low for the most recent IPOs, low underpricing for the new issue is expected and vice versa. Another indicator of the market sentiment, the return of the stock market on which the IPO was issued in the introduction month, also shows a positive relation with the initial return, although not significant. Return on the general stock market index (Euro Stoxx 50) in that same period has little explanatory power but the coefficient is positive.

The two variables related to the number of new IPOs have a negative (sometimes significant) relation with underpricing. This result is different from our conclusion from the correlation analysis, where there was no association. Especially the number of new IPOs in the month of the new issue on that stock market is important. The negative relation is not as expected but is in line with the existence of ‘hot and cold issue markets’ . This theory, supported by empirical evidence (Ibbotson and Jaffe, 1975; Ibbotson, Ritter and Sindelar, 1988; Aggarwal and Rivoli, 1990; Suchard and Woo, 1993), states that there is a wavelike pattern in the IPO market: first there is a period with many IPOs with low underpricing, followed by a period with few but highly underpriced IPOs. When there is much IPO activity, underpricing is relatively low and higher when few new issues are brought to Easdaq and EuroNM, consistent with the wave theory.

One of the most significant explanatory variables, when available, is the rate of oversubscription, consistent with Beatty and Ritter (1986), Koh and Walter (1989), Levis (1990), Cherubini and Ratti (1992) and Suchard and Woo (1993). If the oversubscription rate is 10 % higher, then the initial return is likely to be about 5 % higher. The market sentiment for a particular IPO is thus a very strong indicator of the initial return.



The riskiness of an IPO as measured by ex-post volatility also has a significant and positive impact on initial return as expected, and consistent with Miller and Reilly (1987) and McGuinness (1992). When the company's business activity is in the area of software, internet, IT services or telecommunications (ex-ante risk indicator), then initial returns are significantly higher too. Other risk indicators, the (logarithm of ) market capitalisation and the amount of funds raised, have little or no effect on the level of initial return. The issue price has a negative but not significant effect on the initial return, as expected.

Contrary to American studies (Barry, Peavy, Muscarella and Vetsuypens, 1990; Megginson and Weiss, 1991), the certification of an IPO by a venture capital company has no significant effect on the initial returns. There is no difference between the behaviour of venture capital backed and non-venture capital backed companies on Easdaq and EuroNM.

It is furthermore confirmed that the initial returns on Le Nouveau Marché and Easdaq are lower than on the Neuer Markt.

## **6. Conclusion**

On Easdaq and EuroNM, the difference between the issue price and stock price at the end of the first trading day, corrected for the evolution of the market, is high: on average 15.87% on Easdaq and even 38.67% on EuroNM. The highest initial returns are found on the Neuer Markt : 58.29% on average, with a maximum of 403%. EuroNM Belgium is lagging : the initial returns are not significantly different from zero on this small stock market (12 IPOs). The positive initial returns (corrected for the stock market evolution) remain on high for the first twenty trading days.

The riskiness of a stock, as measured by the volatility of its returns after the IPO, its issue price and its business activity ( ICT), positively influence the initial return. In order to attract more investors, riskier IPOs are introduced at lower prices than their market value. This finding is in line with theories of underpricing, hinting that the introduction price is lower than the intrinsic value of the stock.

However, investor sentiment, as well for a particular IPO as the general market sentiment at the time of the IPO, also explains initial returns on Easdaq and EuroNM. One of the most

important determinants of the initial return is the oversubscription rate (only available on the Nouveau Marché), an indicator of the investor sentiment for a particular IPO. A high oversubscription rate is an indication of a positive sentiment of the investors for this particular IPO. When the demand is substantially higher than the supply of a particular stock, it is obvious that the stock price will rise. Other determinants of initial returns are the initial returns of the previous IPOs and the number of IPOs during the month of the IPO, both indicators of the general market sentiment at the time of the IPO. The higher the initial returns of the previous IPOs, the higher the initial return of this particular IPO will be, everything else equal. This hints to the fact that investor sentiment is an important determinant of initial returns. Also, underpricing theories cannot account for some extremely high observed initial returns; these abnormal returns are probably driven by investor overvaluation. Venture capitalist backed IPOs do not present lower initial returns; this in contrast with underpricing theory's predictions.

Moreover, the more IPOs there are, the lower the initial return is, also supporting investor sentiment and 'wave theories'. This suggests that initial returns are not lasting in the long run; the high initial returns are then merely a temporary overpricing of the stock.

Our study found support for both underpricing theories and investor sentiment theories. Abnormal initial returns are caused by fundamental characteristics of the stock (its riskiness) and by investor sentiment. They can therefore either be attributed to 'real' underpricing of the stock at IPO, or can be a temporary fad caused by investor sentiment. Further analysis of the long term performance of these IPOs is needed in order to disentangle both explanations. However, it is clear that initial returns are not merely driven by underpricing, and therefore one should be careful by referring to this initial return via the term 'underpricing', as most of the literature does.

### **Acknowledgements**

This paper has benefited a lot from comments of AFFI 2001 (Namûr, Belgium), EFMA 2001 (Lugano, Switzerland) and Ghent University- Working Paper Forum participants.

## References

- Affleck-Graves J., Hegde S.P., Miller R.E., Reilly F.K., The effect of the trading system on the underpricing of Initial Public Offerings, *Financial Management*, spring 1993, p. 99-108
- Aggarwal R., Rivoli P., Fads in the Initial Public Offering market?, *Financial Management*, winter 1990, p. 45-57
- Balver R.J., McDonald B., Miller R.E., Underpricing of new issues and the choice of auditor as a signal of investment banker reputation, *The Accounting Review* nr. 4, October 1988, p. 605-622
- Barry C.B., Peavy J.W., Muscarella C.J., Vetsuypens M.R., The role of venture capital in the creation of public companies, *The Journal of Financial Economics* 27, 1990, p. 447-471
- Beatty R.P., Ritter J.R., Investment banking, reputation and the underpricing of Initial Public Offering, *The Journal of Financial Economics* 15, 1986, p. 213-232
- Beatty R.P., Auditor Reputation and the pricing of Initial Public Offering, *The Accounting Review* nr. 4, October 1989, p. 693-709
- Bergström C., Högfeldt P., Anders W., The role of venture capital in initial public offerings: an explorative comparison of US and Swedish evidence, in *Research in International Business and Finance*, 1994, JAI Press, editor John Doukas
- Bergström C., Fredriksson J., Högfeldt P., Lind D., Why are IPOs underpriced ? Empirical evidence from qualitative and quantitative analysis, paper, 1995, 30 p.
- Brav A., Gompers P., Myth or reality ? The long-run underperformance of initial public offerings: evidence from venture capital and nonventure capital-backed companies, *Journal of Finance* 52 (dec 1997), p. 1791-1822
- Buijs A., Eijgenhuijsen H.G., Initial Public Offerings in the Netherlands 1982-1991. An analysis of initial returns and long-run performance, unpublished paper, 1992, Free University, Amsterdam
- Carter R., Manaster S., Initial Public Offering and underwriter reputation, *The Journal of Finance* nr. 4, September 1990, p. 1045-1065
- Chalk A., Peavy J., Initial Public Offering: Daily returns, offering types and the price effect, *Financial Analysts Journal*, September-October 1987, p. 65-69
- Cherubini U., Ratti M., Underpricing of initial public offerings in the Milan Stock Exchange, 1985-1991, Rome: Banco Commerciale Italiana, Economic Research Unit
- Hamao Y., Packer F., Ritter J.R., 1998, Institutional affiliation and the role of venture capital: Evidence from Initial Public Offerings in Japan, Unpublished Columbia University working paper
- Hunt-McCool J.H., Koh S.C., Francis B.B., Testing for deliberate underpricing in the Initial Public Offering premarket: a stochastic approach, *The review of financial studies* nr. 4, winter 1996, p. 1251-1269
- Ibbotson R.G., Jaffe, "Hot issue" markets, *Journal of Finance* 30, 1975, p. 1027-1042
- Ibbotson R.G., Ritter J.R., Sindelar J., Initial Public Offerings, *Journal of Applied Corporate Finance*, 1988, p. 37-46

- Johnson J., Miller R., Investment Banker Prestige and the Underpricing of Initial Public Offering, *Financial Management*, summer 1988, p. 19-29
- Kahneman D., Tversky A., 1982, Intuitive prediction: biases and corrective procedures, in *Judgment under uncertainty: heuristics and biases*, edited by D. Kahneman, P. Slovic, A. Tversky, NY Cambridge University Press
- Kiyamaz H., 1997, Turkish IPO underpricing in the short and long run, Unpublished Bilkent University working paper
- Koh F., Walter T., A direct test of Rock's model of the pricing of unseasoned issues, *Journal of Financial Economics* 23, 1989, p. 251-272
- Krishnamurti C., Kumar P., 1994, The initial listing performance of Indian IPOs, Unpublished Indian Institute of Science working paper
- Kumer P.C., Tsetsekos G.P., Asymmetric information, Investment Banking Contracts and the Certification Hypothesis, *Journal of Banking and Finance*, 17, 1993, p. 117-129
- Kunz R.M., Aggarwal R., Why Initial Public Offering are underpriced : evidence from Switzerland, *The Journal of Banking and Finance* nr. 18, 1994, p. 705-723
- Lee C., Shleifer A., Thaler R., 1991, Investor sentiment and the closed-end fund puzzle, *Journal of Finance* 46, p. 29-48
- Lee P., Taylor S., Walter T., 1996, Australian IPO underpricing in the short and long run, *Journal of Banking and Finance* 20, p. 1189-1210
- Levis M., The winner's curse problem, interest costs and the underpricing of Initial Public Offering, *The Economic Journal* nr. 100, March 1990, p. 76-89
- Ljunqvist A.P., Underpricing and long-term performance of German Initial Public Offerings, 1978-1992, mimeo, (Nuffield College, Oxford University, UK), 1993
- Ljunqvist A.P., 1997, Pricing initial public offerings: further evidence from Germany, *European Economic Review* 41, p. 1309-1320
- Logue D., On the pricing of unseasoned equity issues: 1965-69, *Journal of Financial and Qualitative Analysis* 8, 1973, p. 91-103
- Loughran T., Ritter J.R., The timing and subsequent performance of IPOs: the US and international evidence, Working Paper, University of Illinois, 1993
- Loughran T., Ritter J.R., The new issues puzzle, *Journal of Finance* 50, 1995, p. 23-51
- McGuinness P., An examination of the underpricing of initial public offerings in Hong Kong: 1980-90, *Journal of Business Finance and Accounting*, 19(2), January 1992, p. 165-186
- Megginson W.L., Weiss K.A., Venture capitalist certification in Initial Public Offering, *The Journal of Finance* nr. 3, July 1991, p. 879-904
- Miller R., Reilly F., An examination of mispricing, returns and uncertainty for IPOs, *Financial Management*, summer 1987, p. 33-38
- Muscarella C., Vetsuypens S., A simple test of Baron's model of IPO underpricing, *Journal of Financial Economics* 24, 1989, p. 125-135
- Rees W., Initial public offerings in the UK: 1984-1991, paper, University of Strathclyde, Glasgow
- Ritter J.R., The hot issue market of 1980, *Journal of Business* 57, 1984, p. 215-240

- Ritter J.R., The costs of going public, The Journal of Financial Economics 19, 1987, p. 269-281
- Ritter J.R., The long-run performance of Initial Public Offering, The Journal of Finance, March 1991, p. 3-27
- Ritter J.R., 1998, Initial Public Offerings, Contemporary Finance Digest, vol. 2, no. 1, spring 1998, p. 5-30
- Smit H. , Trigeorgis L., Growth options, competition and strategy: an answer to the market valuation puzzle ? , published in 'Real Options and Business Strategy: Applications to Decision Making', Risk Books, 1999 (Chapter 2)
- Van Hulle C., Casselman M., Imam M.O., Initial Public Offering in Belgium- Theory and evidence, Tijdschrift voor Economie en Management nr. 4, 1993, p. 385-423
- Zackrisson E., Underwriter support and IPO underpricing in Sweden, mater thesis, School of Economics and Commercial Law, Gothenburg University, 1994

#### Websites

EuroNM: <http://www.EuroNM.com>

NMAX: <http://www.aex.nl/nmax>

Nouveau Marché: <http://www.nouveau-marché.fr>

Neuer Market: <http://www.neuer-markt.de>

EuroNM Belgium: <http://www.beurs.be>

Easdaq: <http://www.easdaq.be>

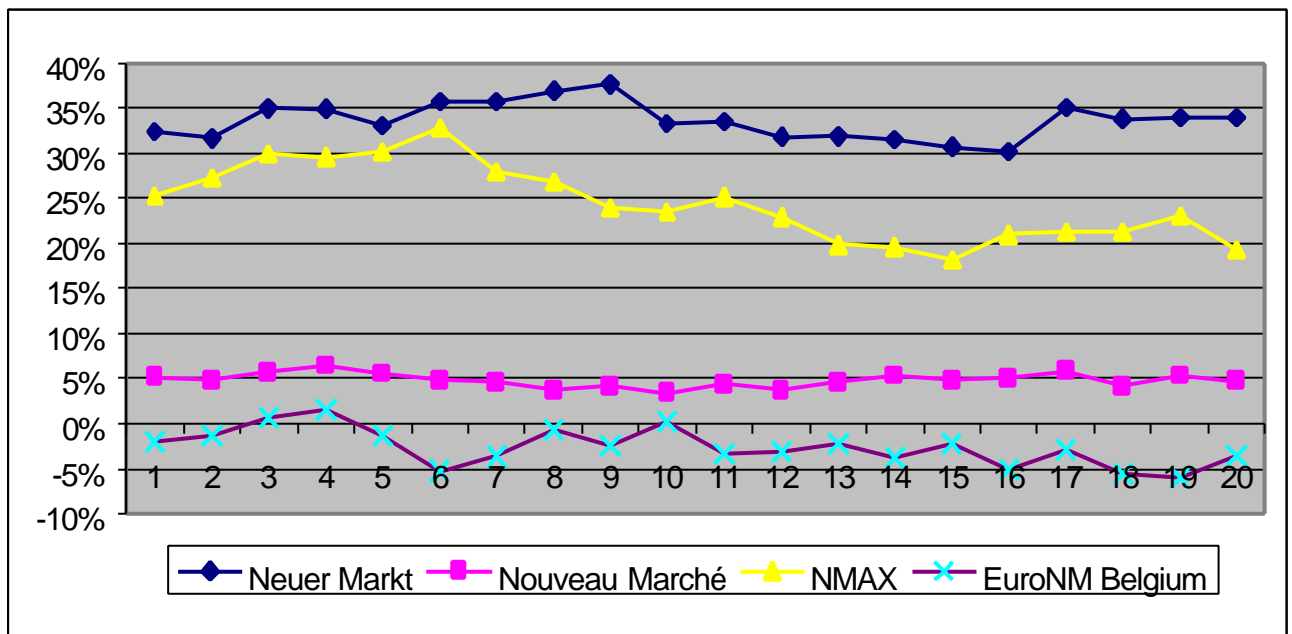
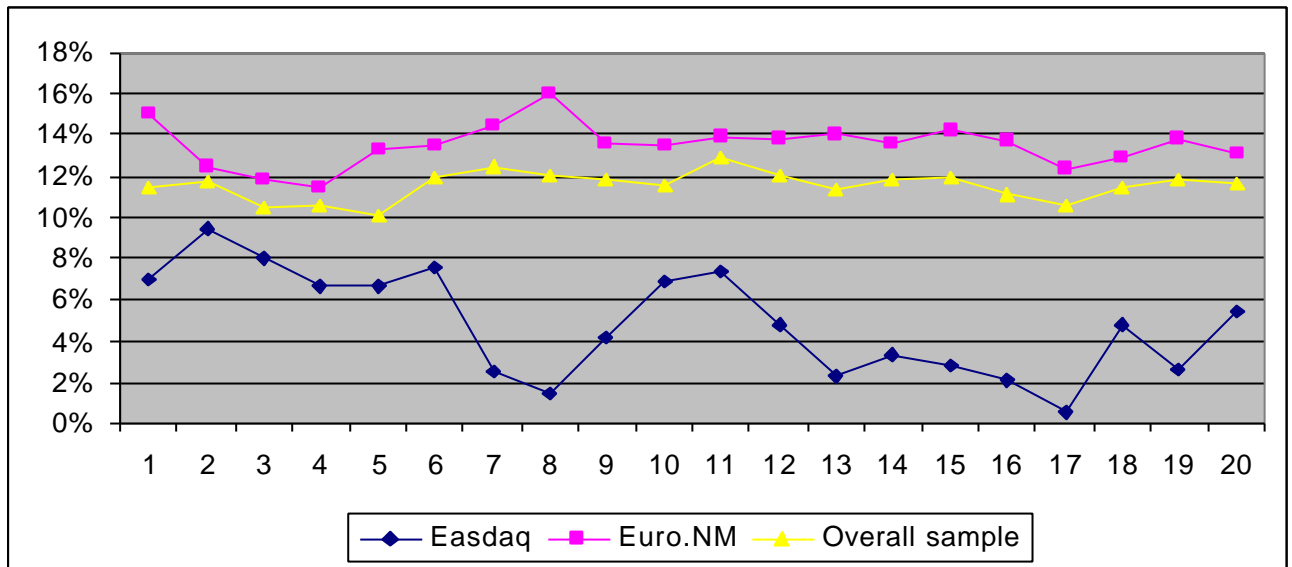
**Table 1: Market capitalisation and funds raised at IPO time ( in million EUR)**

|                        | <u>Number</u> | <u>Market capitalisation at IPO</u> |        |        | <u>Funds raised at IPO</u> |        |        |
|------------------------|---------------|-------------------------------------|--------|--------|----------------------------|--------|--------|
|                        |               | Mean                                | Median | Total  | Mean                       | Median | Total  |
| Easdaq                 | 35            | 152.93                              | 97.24  | 5 352  | 47.77                      | 32.69  | 1 672  |
| EuroNM                 | 265           | 113.56                              | 69.02  | 30 093 | 32.99                      | 19.10  | 8 512  |
| <i>EuroNM segments</i> |               |                                     |        |        |                            |        |        |
| Neuer Markt            | 146           | 163.58                              | 111.98 | 23 882 | 48.27                      | 32.12  | 7 047  |
| Nouveau Marché         | 93            | 52.70                               | 29.44  | 4 901  | 12.49                      | 7.46   | 1 162  |
| NMAX                   | 14            | 68.80                               | 49.61  | 963    | 16.14                      | 13.20  | 226    |
| EuroNM Belgium         | 12            | 28.89                               | 15.65  | 347    | 6.42                       | 8.75   | 77     |
|                        |               |                                     |        |        |                            |        |        |
| Total sample           | 300           | 118.15                              | 71.59  | 35 446 | 34.76                      | 21.25  | 10 184 |

**Table 2: Summary statistics of market-corrected initial returns on the first trading day (in %)**

|                  | <b>EuroNM</b> |               |                    |                       |             |                       | <b>Overall sample</b> |
|------------------|---------------|---------------|--------------------|-----------------------|-------------|-----------------------|-----------------------|
|                  | <b>Easdaq</b> | <b>EuroNM</b> | <b>Neuer Markt</b> | <b>Nouveau Marché</b> | <b>NMAX</b> | <b>EuroNM Belgium</b> |                       |
| Minimum          | -20.26        | -35.05        | -17.20             | -35.05                | -5.50       | -24.09                | -35.05                |
| Maximum          | 277.22        | 403.00        | 403.00             | 104.31                | 96.74       | 19.78                 | 403.00                |
| Mean             | 15.87         | 38.67         | 58.29              | 13.99                 | 31.19       | -0.10                 | 36.01                 |
| Median           | 6.81          | 14.78         | 32.43              | 5.28                  | 25.12       | -2.43                 | 11.42                 |
| Stand. Dev.      | 48.19         | 63.01         | 75.68              | 26.97                 | 36.22       | 12.18                 | 61.83                 |
| Number           | 35            | 265           | 146                | 93                    | 14          | 12                    | 300                   |
| Significance (p) | 0.059         | 0.000         | 0.000              | 0.000                 | 0.007       | 0.977                 | 0.000                 |

**Figure 1 : Median market-corrected cumulative initial returns for the first twenty trading days on the different markets**



**Table 3: Descriptive statistics of the independent variables**

|                                   | Number | Mean  | Median | Minimum | Maximum | Standard deviation |
|-----------------------------------|--------|-------|--------|---------|---------|--------------------|
| MARKET SENTIMENT AT IPO TIME      |        |       |        |         |         |                    |
| Return Spec %                     | 280    | 1.62  | -1.07  | -19.24  | 51.21   | 11.13              |
| Return Gen %                      | 280    | 1.61  | 2.92   | -16.61  | 11.46   | 5.37               |
| LN New IPOs                       | 264    | 1.78  | 1.79   | 0.00    | 3.09    | 0.82               |
| NewIPOs%                          | 364    | 15.21 | 14.07  | 0.25    | 66.67   | 11.02              |
| IR Last IPOs %                    | 263    | 38.82 | 22.84  | -12.20  | 254.21  | 46.11              |
| SENTIMENT FOR THIS PARTICULAR IPO |        |       |        |         |         |                    |
| Overscription                     | 93     | 15.30 | 5.00   | 0.00    | 138.93  | 23.01              |
| COMPANY RISK                      |        |       |        |         |         |                    |
| Volatility %                      | 300    | 4.92  | 4.07   | 0.47    | 21.12   | 3.38               |
| ICT                               | 300    | 0.42  | 0      | 0       | 1       | 0.49               |
| LN Market cap                     | 300    | 4.27  | 4.27   | 1.61    | 7.28    | 0.99               |
| LN Funds raised                   | 292    | 3.03  | 3.06   | 0.74    | 5.99    | 0.99               |
| LN Issue price                    | 300    | 2.80  | 2.86   | -1.06   | 5.59    | 0.83               |
| CERTIFICATION OF THE IPO          |        |       |        |         |         |                    |
| Venture capital                   | 263    | 0.43  | 0      | 0       | 1       | 0.50               |
| CONTROL VARIABLES                 |        |       |        |         |         |                    |
| Nouveau Marché                    | 300    | 0.31  | 0      | 0       | 1       | 0.46               |
| Easdaq                            | 300    | 0.12  | 0      | 0       | 1       | 0.32               |



**Table 4a: Correlations between initial return on the first trading day and the independent variables**

| MARKET SENTIMENT AT IPO TIME      | Correlation | Significance | N   |
|-----------------------------------|-------------|--------------|-----|
| Return Spec %                     | 0.172       | **           | 280 |
| Return Gen %                      | 0.082       |              | 280 |
| LN New IPOs                       | -0.011      |              | 264 |
| NewIPOs%                          | -0.017      |              | 264 |
| IR Last IPOs %                    | 0.432       | **           | 263 |
| SENTIMENT FOR THIS PARTICULAR IPO |             |              |     |
| Overscription                     | 0.638       | **           | 93  |
| COMPANY RISK                      |             |              |     |
| Volatility %                      | 0.302       | **           | 300 |
| LN Market cap                     | 0.181       | **           | 300 |
| LN Funds raised                   | 0.186       | **           | 300 |
| LN Issue price                    | -0.004      |              | 300 |

\* : Correlation is significant at the 0.05 level (two-tailed).

\*\* : Correlation is significant at the 0.01 level (two-tailed).

**Table 4b: Initial returns on the first trading day for the dummy variables**

|                          | Number | Mean  | Standard deviation | T-value   |
|--------------------------|--------|-------|--------------------|-----------|
| COMPANY RISK             |        |       |                    |           |
| ICT company              | 126    | 50.98 | 72.28              | ** -3.642 |
| Non ICT company          | 174    | 25.17 | 50.49              |           |
| CERTIFICATION OF THE IPO |        |       |                    |           |
| VC backed                | 112    | 42.59 | 58.30              | -1.066    |
| Non VC backed            | 151    | 34.33 | 64.78              |           |
| CONTROL VARIABLES        |        |       |                    |           |
| Nouveau Marché           | 93     | 13.99 | 26.97              | ** 4.251  |
| Non Nouveau Marché       | 207    | 45.90 | 70.04              |           |
|                          |        |       |                    |           |
| Easdaq                   | 35     | 15.87 | 48.19              | * 2.061   |
| Non Easdaq               | 265    | 38.67 | 63.00              |           |

\* : Difference is significant at the 0.05 level (2-tailed).

\*\* : Difference is significant at the 0.01 level (2-tailed)

**Table 5 a : Results of the multiple regression including funds raised**

|                                   | <b>Overall sample</b> |           | <b>Neuer Markt</b> |          | <b>Nouveau Marché</b> |          |
|-----------------------------------|-----------------------|-----------|--------------------|----------|-----------------------|----------|
|                                   | Coefficient           | t-value   | Coefficient        | t-value  | Coefficient           | t-value  |
| ( Constant)                       | 47.000                | 1.903     | 62.275             | 1.053    | -10.510               | -1.149   |
| MARKET SENTIMENT AT IPO TIME      |                       |           |                    |          |                       |          |
| Return Spec                       | 0.161                 | 0.314     | 0.961              | 1.173    | 0.819                 | 1.589    |
| Return Gen                        | 0.629                 | 0.923     | 1.069              | 0.938    | -0.273                | -0.465   |
| LN New IPOs                       | -15.421               | * -2.472  | -9.753             | -1.113   | -5.082                | -1.349   |
| New IPOs %                        | -0.025                | -0.076    | -1.462             | * -2.080 | 0.583                 | ** 3.617 |
| IR Last IPOs                      | 0.490                 | ** 3.820  | 0.605              | ** 4.077 | 0.008                 | 0.053    |
| SENTIMENT FOR THIS PARTICULAR IPO |                       |           |                    |          |                       |          |
| Overscription                     |                       |           |                    |          | 0.521                 | ** 2.845 |
| COMPANY RISK                      |                       |           |                    |          |                       |          |
| Volatility                        | 4.743                 | ** 3.722  | 6.421              | * 2.253  | 2.077                 | 1.616    |
| ICT                               | 22.341                | ** 2.562  | 28.451             | * 2.255  | 2.003                 | 0.386    |
| LN Funds raised                   | -0.392                | -0.091    | 3.538              | 0.387    | 2.118                 | 0.828    |
| LN Issue price                    | -7.350                | -1.479    | -20.922            | -1.416   | 0.473                 | 0.265    |
| CERTIFICATION OF THE IPO          |                       |           |                    |          |                       |          |
| Venture capital                   | 2.602                 | 0.343     | 2.856              | 0.232    | 0.145                 | 0.032    |
| CONTROL VARIABLES                 |                       |           |                    |          |                       |          |
| Nouveau Marché                    | -27.796               | ** -2.598 |                    |          |                       |          |
| Easdaq                            | -23.457               | -1.747    |                    |          |                       |          |
|                                   |                       |           |                    |          |                       |          |
| <b>Number of valid cases</b>      | 226                   |           | 110                |          | 77                    |          |
| <b>Adjusted R square</b>          | 30.4 %                |           | 24.9 %             |          | 49.4 %                |          |
|                                   |                       |           |                    |          |                       |          |

\* : the coefficient is significant at the 0.05 level (two-tailed )

\*\* : the coefficient is significant at the 0.01 level (two-tailed)

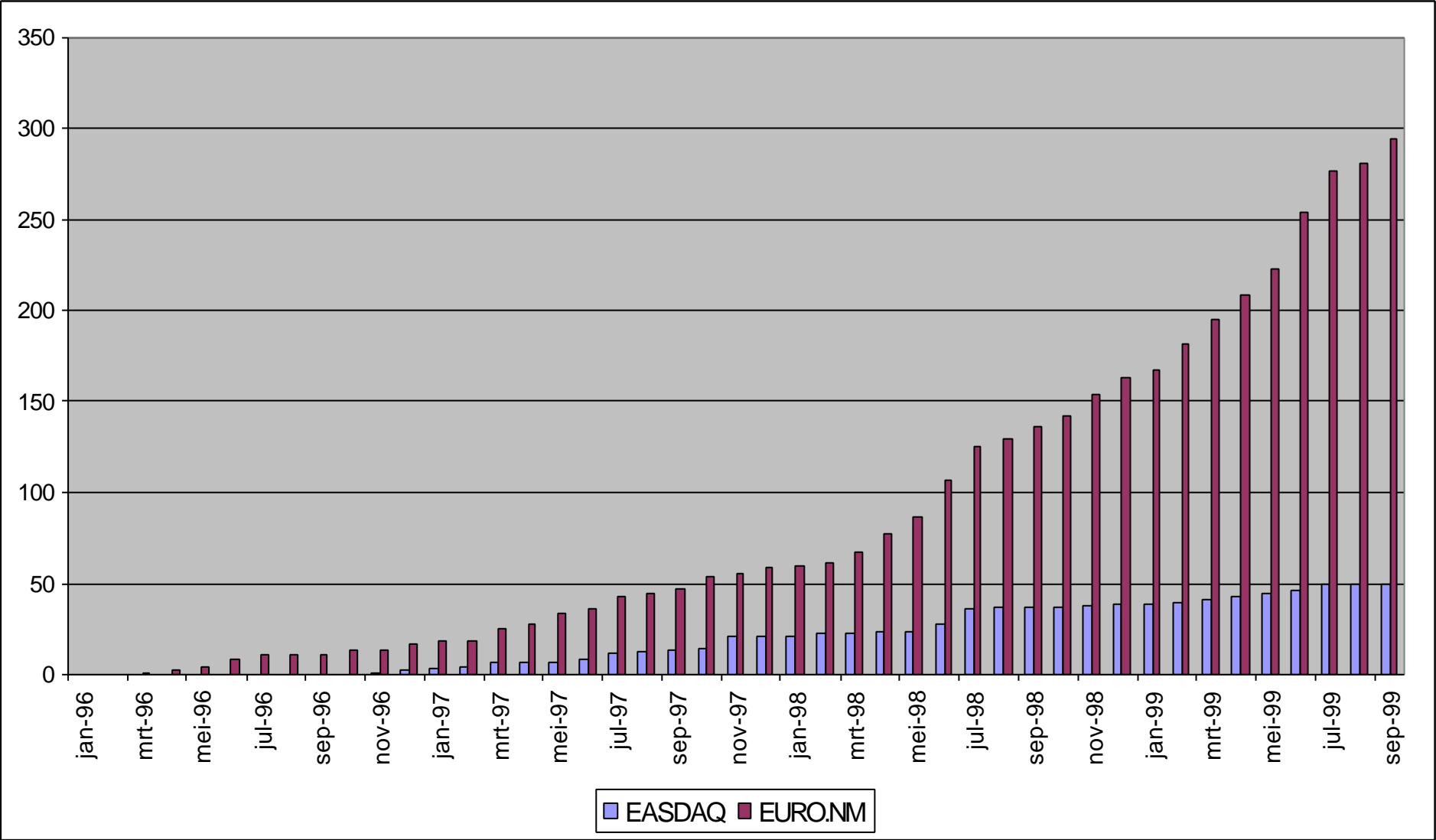
**Table 5 b: Results of the multiple regression including market capitalisation**

|                                   | <b>Overall sample</b> |          | <b>Neuer Markt</b> |          | <b>Nouveau Marché</b> |          |
|-----------------------------------|-----------------------|----------|--------------------|----------|-----------------------|----------|
|                                   | Coefficient           | t-value  | Coefficient        | t-value  | Coefficient           | t-value  |
| ( Constant)                       | 46.846                | 1.638    | 56.062             | 0.810    | -14.386               | -1.430   |
| MARKET SENTIMENT AT IPO TIME      |                       |          |                    |          |                       |          |
| Return Spec                       | 0.160                 | 0.311    | 0.978              | 1.156    | 0.802                 | 1.561    |
| Return Gen                        | 0.638                 | 0.949    | 1.101              | 0.987    | -0.217                | -0.372   |
| LN New IPOs                       | -15.450               | * -2.479 | -9.294             | -1.051   | -5.268                | -1.455   |
| New IPOs %                        | -0.027                | -0.081   | -1.482             | * -2.085 | 0.571                 | ** 3.730 |
| IR Last IPOs                      | 0.490                 | ** 3.831 | 0.610              | ** 4.115 | 0.015                 | 0.095    |
| SENTIMENT FOR THIS PARTICULAR IPO |                       |          |                    |          |                       |          |
| Overscription                     |                       |          |                    |          | 0.506                 | ** 2.800 |
| COMPANY RISK                      |                       |          |                    |          |                       |          |
| Volatility                        | 4.740                 | ** 3.706 | 6.458              | * 2.200  | 2.111                 | 1.653    |
| ICT                               | 22.442                | ** 2.567 | 28.263             | * 2.230  | 3.151                 | 0.595    |
| LN Market cap                     | -0.177                | -0.043   | 3.820              | 0.354    | 3.183                 | 1.431    |
| LN Issue price                    | -7.446                | -1.523   | -21.131            | -1.395   | -0.341                | -0.184   |
| CERTIFICATION OF THE IPO          |                       |          |                    |          |                       |          |
| Venture capital                   | 2.485                 | 0.329    | 3.295              | 0.264    | -0.274                | -0.059   |
| CONTROL VARIABLES                 |                       |          |                    |          |                       |          |
| Nouveau Marché                    | -27.422               | * -2.593 |                    |          |                       |          |
| Easdaq                            | -23.540               | -1.778   |                    |          |                       |          |
|                                   |                       |          |                    |          |                       |          |
| <b>Number of valid cases</b>      | 227                   |          | 110                |          | 78                    |          |
| <b>Adjusted R square</b>          | 30.4 %                |          | 24.9 %             |          | 48.2 %                |          |

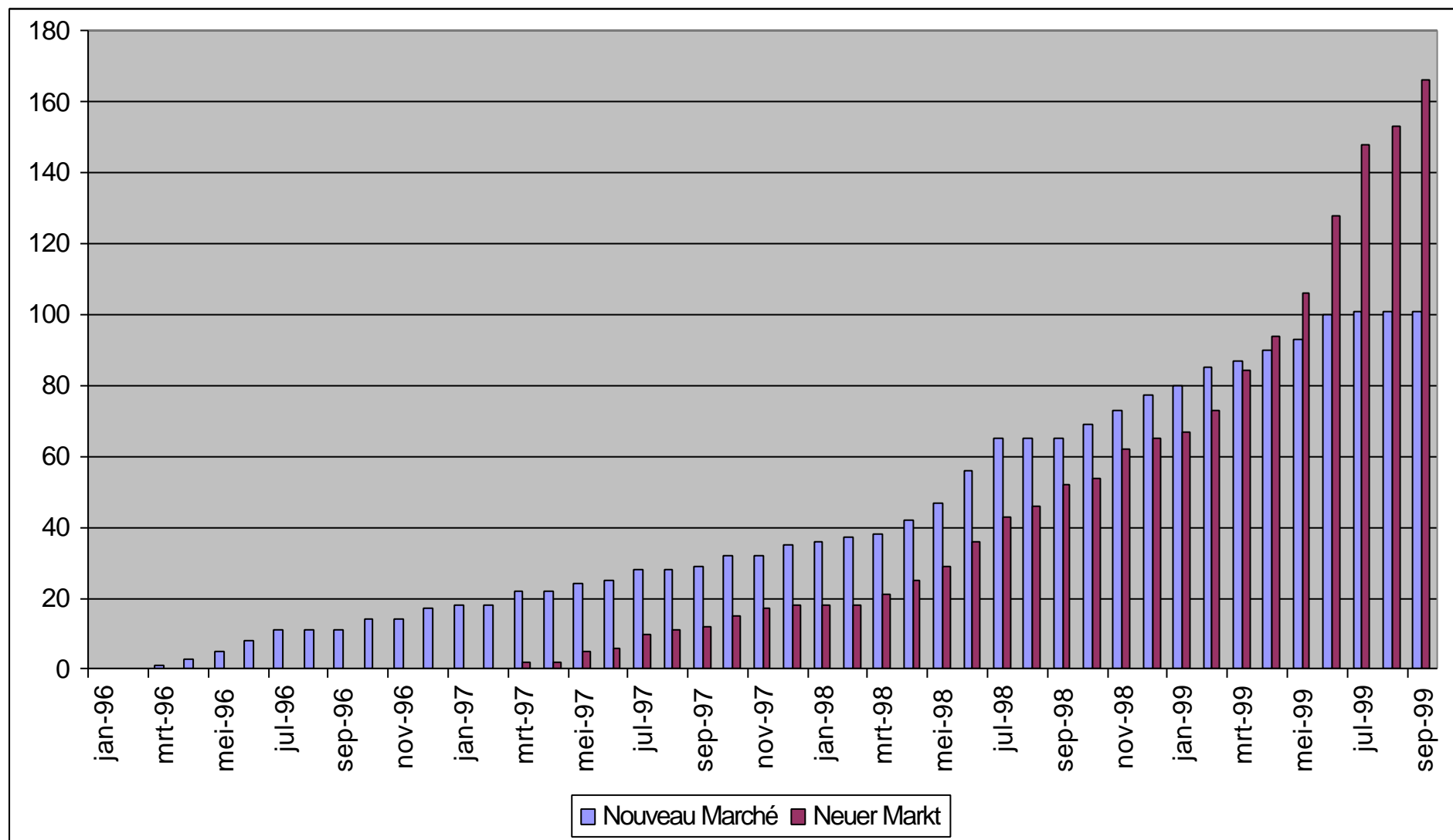
\* : the coefficient is significant at the 0.05 level (two-tailed)

\*\* : the coefficient is significant at the 0.01 level (two-tailed)

**Appendix Figure A: Total number of listings on Easdaq and EuroNM between January 1996 and October 1999**



**Appendix Figure B: Total number of listings on Nouveau Marché and Neuer Markt between January 1996 and October 1999**



**Appendix Table A: Average daily return and standard deviation of daily return on Easdaq, EuroNM and investment alternatives, from 1996 till 1999**

|                                       | <b>EuroNM<br/>All Share</b> | <b>Easdaq<br/>All Share</b> | <b>Neuer<br/>Markt</b> | <b>Nouveau<br/>Marché</b> | <b>NMAX</b> | <b>EuroNM<br/>Belgium</b> | <b>Euro<br/>Stoxx 50</b> | <b>Nasdaq<br/>100</b> | <b>Nasdaq<br/>Composite</b> |
|---------------------------------------|-----------------------------|-----------------------------|------------------------|---------------------------|-------------|---------------------------|--------------------------|-----------------------|-----------------------------|
| <b>Since the launch of the index</b>  |                             |                             |                        |                           |             |                           |                          |                       |                             |
| Daily return                          | 0.1318 %                    | 0.1976 %                    | 0.3086 %               | 0.0387 %                  | 0.0706 %    | 0.0879 %                  | 0.1017 %                 | 0.1777 %              | 0.1232 %                    |
| Standard deviation                    | 1.8833 %                    | 1.9930 %                    | 2.5236 %               | 1.4757 %                  | 2.1572 %    | 2.5735 %                  | 1.1581 %                 | 1.8035 %              | 1.3919 %                    |
| Ratio return to<br>standard deviation | 6.9963 %                    | 9.9167 %                    | 12.2272 %              | 2.6231 %                  | 3.2724 %    | 3.4154 %                  | 8.7841 %                 | 9.8558 %              | 8.8514 %                    |
| <b>1996</b>                           |                             |                             |                        |                           |             |                           |                          |                       |                             |
| Daily return                          | -0.3214 %                   | -0.0874 %                   | /                      | -0.3214 %                 | /           | /                         | 0.0753 %                 | 0.1457 %              | 0.0830 %                    |
| Standard deviation                    | 1.5443 %                    | 0.8237 %                    | /                      | 1.5443 %                  | /           | /                         | 0.5891 %                 | 1.3992 %              | 0.9567 %                    |
| Ratio return to<br>standard deviation | -20.8151 %                  | -10.4912 %                  | /                      | -20.8151 %                | /           | /                         | 12.7894 %                | 10.4111 %             | 8.6759 %                    |
| <b>1997</b>                           |                             |                             |                        |                           |             |                           |                          |                       |                             |
| Daily return                          | 0.2501 %                    | 0.1753 %                    | 0.3551 %               | 0.0923 %                  | -0.0912 %   | 0.0333 %                  | 0.1256 %                 | 0.0832 %              | 0.0823 %                    |
| Standard deviation                    | 1.4788 %                    | 1.4872 %                    | 2.6281 %               | 1.4462 %                  | 2.2852 %    | 2.3145 %                  | 1.1399 %                 | 1.6753 %              | 1.1422 %                    |
| Ratio return to<br>standard deviation | 16.9145 %                   | 11.7906 %                   | 13.5100 %              | 6.3841 %                  | -3.9927 %   | 1.4367 %                  | 11.0189 %                | 4.9671 %              | 7.2046 %                    |
| <b>1998</b>                           |                             |                             |                        |                           |             |                           |                          |                       |                             |
| Daily return                          | 0.3554 %                    | 0.1508 %                    | 0.4265 %               | 0.1031 %                  | 0.2536 %    | 0.2333 %                  | 0.1124 %                 | 0.2564 %              | 0.1414 %                    |
| Standard deviation                    | 2.4127 %                    | 1.2288 %                    | 2.8245 %               | 1.6186 %                  | 2.7301 %    | 3.3419 %                  | 1.5748 %                 | 1.9903 %              | 1.6372 %                    |
| Ratio return to<br>standard deviation | 14.7304 %                   | 12.2747 %                   | 15.1003 %              | 6.3686 %                  | 9.2885 %    | 6.9811 %                  | 7.1370 %                 | 12.8836 %             | 8.6374 %                    |
| <b>1999(until 1/12/99)</b>            |                             |                             |                        |                           |             |                           |                          |                       |                             |
| Daily return                          | 0.1460 %                    | 0.2060 %                    | 0.1385 %               | 0.2192 %                  | 0.0069 %    | -0.0279 %                 | 0.0910 %                 | 0.2271 %              | 0.1926 %                    |
| Standard deviation                    | 1.8241 %                    | 2.0674 %                    | 2.0349 %               | 1.2182 %                  | 1.0454 %    | 1.6337 %                  | 1.1135 %                 | 2.0955 %              | 1.7158 %                    |
| Ratio return to<br>standard deviation | 8.0055 %                    | 9.9645 %                    | 6.8079 %               | 17.9944 %                 | 0.6556 %    | -1.7085 %                 | 8.1749 %                 | 10.8391 %             | 11.2265 %                   |

**Appendix Table B: Correlation between daily returns of the stock market indices between 14/4/1997 and 1/12/1999**

|                         | <b>EuroNM All Share</b> | <b>Easdaq All Share</b> | <b>Neuer Markt</b> | <b>Nouveau Marché</b> | <b>NMAX</b>  | <b>EuroNM Belgium</b> |
|-------------------------|-------------------------|-------------------------|--------------------|-----------------------|--------------|-----------------------|
| <b>EuroNM All Share</b> | <b>1.000</b>            | 0.590                   | 0.952              | 0.515                 | 0.455        | 0.139                 |
|                         |                         |                         |                    |                       |              |                       |
| <b>Easdaq All Share</b> | 0.590                   | <b>1.000</b>            | 0.519              | 0.437                 | 0.416        | 0.125                 |
|                         |                         |                         |                    |                       |              |                       |
| <b>Neuer Markt</b>      | 0.952                   | 0.519                   | <b>1.000</b>       | 0.370                 | 0.368        | 0.108                 |
|                         |                         |                         |                    |                       |              |                       |
| <b>Nouveau Marché</b>   | 0.515                   | 0.437                   | 0.370              | <b>1.000</b>          | 0.333        | 0.156                 |
|                         |                         |                         |                    |                       |              |                       |
| <b>NMAX</b>             | 0.455                   | 0.416                   | 0.368              | 0.333                 | <b>1.000</b> | 0.184                 |
|                         |                         |                         |                    |                       |              |                       |
| <b>EuroNM Belgium</b>   | 0.139                   | 0.125                   | 0.108              | 0.156                 | 0.184        | <b>1.000</b>          |
|                         |                         |                         |                    |                       |              |                       |
| <b>Euro Stoxx 50</b>    | 0.661                   | 0.559                   | 0.577              | 0.493                 | 0.479        | 0.125                 |
|                         |                         |                         |                    |                       |              |                       |
| <b>Nasdaq 100</b>       | 0.392                   | 0.485                   | 0.340              | 0.385                 | 0.242        | 0.101                 |
|                         |                         |                         |                    |                       |              |                       |
| <b>Nasdaq Composite</b> | 0.410                   | 0.530                   | 0.354              | 0.420                 | 0.247        | 0.110                 |
|                         |                         |                         |                    |                       |              |                       |

All correlations are significant at the 0.01 level (2- tailed).

**Appendix Table C: Initial returns presented in previous studies (non-exhaustive list)**

| <u>Country</u> | <u>Author + year</u>              | <u>Number of IPOs</u> | <u>Investigated period</u> | <u>Initial return (%)</u> |
|----------------|-----------------------------------|-----------------------|----------------------------|---------------------------|
| Australia      | Lee, Taylor, Walter (1996)        | 266                   | 1976-1989                  | 11.9                      |
| Belgium        | Van Hulle, Vanthienen (1989)      | 19                    | 1984-1987                  | 8.8                       |
| Brasil         | Aggarwal, Leal , Hernandez (1993) | 62                    | 1980-1990                  | 78.5                      |
| Germany        | Ljunqvist (1997)                  | 170                   | 1978-1992                  | 10.9                      |
| Japan          | Hamao, Packer, Ritter (1998)      | 975                   | 1970-1996                  | 24.0                      |
| Korea          | Krinsky, Kim, Lee (1992)          | 275                   | 1985-1990                  | 79.0                      |
| Singapore      | Dawson (1987)                     | 39                    | 1978-1983                  | 39.4                      |
| Spain          | Fernandez et al. (1992)           | 71                    | 1985-1990                  | 35.4                      |
| Turkey         | Kiyamaz (1997)                    | 138                   | 1990-1995                  | 13.6                      |
| United Kingdom | Levis (1993)                      | 632                   | 1980-1988                  | 14.1                      |
| United Kingdom | Rees (1993)                       | 489                   | 1984-1991                  | 16.0                      |
| United States  | Ritter (1984)                     | + 5000                | 1960-1982                  | 18.8                      |
| United States  | Ibbotson, Ritter, Sindelar (1988) | 8668                  | 1960-1987                  | 16.4                      |
| United States  | Beatty (1989)                     | 2215                  | 1975-1984                  | 22.1                      |
| United States  | Ritter (1991)                     | 1526                  | 1975-1984                  | 14.3                      |
| United States  | Ibbotson, Ritter, Sindelar (1994) | 13308                 | 1960-1996                  | 15.8                      |
| United States  | Booth (1996)                      | 2151                  | 1977-1988                  | 13.1                      |
| Switzerland    | Kunz, Aggarwal (1994)             | 42                    | 1983-1989                  | 35.8                      |

Sources: Kunz, Aggarwal (1994); Van Hulle, Casselman, Imam (1993); Ritter (1998).

Calculation of initial returns presented in the last column varies from one study to another, but it is always the price difference between market price and introduction price, measured over a certain time interval, which usually varies from one day to one week. In some studies this return is corrected for the stock market evolution, in others it is not.



**Appendix Table D: Correlations between the independent variables**

|                                   | Return<br>Spec        | Return<br>Gen         | LN<br>New<br>IPOs     | New<br>IPOs<br>%      | IR<br>Last<br>IPOs    | Over-<br>Scription   | Vola-<br>Tility       | ICT                   | LN<br>Market<br>Cap | LN<br>Funds<br>Raised | LN<br>Issue<br>Price | Venture<br>Capital | ICT                   | Nouveau<br>Marché    | Easdaq               |
|-----------------------------------|-----------------------|-----------------------|-----------------------|-----------------------|-----------------------|----------------------|-----------------------|-----------------------|---------------------|-----------------------|----------------------|--------------------|-----------------------|----------------------|----------------------|
| MARKET SENTIMENT AT IPO TIME      |                       |                       |                       |                       |                       |                      |                       |                       |                     |                       |                      |                    |                       |                      |                      |
| Return<br>Spec                    | <b>1.000</b><br>(280) | .475<br>(280)<br>**   | -.259<br>(264)<br>**  | .162<br>(264)<br>**   | .027<br>(260)         | .106<br>(89)         | .135<br>(280)<br>*    | -.042<br>(280)        | -.091<br>(280)      | -.074<br>(272)        | .001<br>(280)        | .071<br>(243)      | -.042<br>(280)        | -.028<br>(280)       | .116<br>(280)        |
| Return<br>Gen                     | .475<br>(280)<br>**   | <b>1.000</b><br>(280) | -.167<br>(264)<br>**  | .033<br>(264)         | .008<br>(260)         | -.023<br>(89)        | .056<br>(280)         | -.038<br>(280)        | -.068<br>(280)      | -.061<br>(272)        | .0100<br>(280)       | .009<br>(243)      | -.038<br>(280)        | .155<br>(280)<br>**  | .031<br>(280)        |
| LN New<br>IPOs                    | -.259<br>(264)<br>**  | -.167<br>(264)<br>**  | <b>1.000</b><br>(264) | .176<br>(264)<br>**   | .110<br>(259)         | .131<br>(89)         | .207<br>(264)<br>**   | .211<br>(264)<br>**   | .261<br>(264)<br>** | .279<br>(261)<br>**   | .175<br>(264)<br>**  | -.051<br>(232)     | .211<br>(264)<br>**   | -.377<br>(264)<br>** | -.305<br>(264)<br>** |
| New<br>IPOs %                     | .162<br>(264)<br>**   | .033<br>(264)         | .176<br>(264)<br>**   | <b>1.000</b><br>(264) | .016<br>(259)         | .062<br>(89)         | .007<br>(264)         | .030<br>(264)         | -.007<br>(264)      | .045<br>(261)         | .015<br>(264)        | .004<br>(232)      | .030<br>(264)         | -.127<br>(264)<br>*  | .122<br>(264)<br>*   |
| IR Last<br>IPOs                   | .027<br>(260)         | .008<br>(260)         | .110<br>(259)         | .016<br>(259)         | <b>1.000</b><br>(263) | .239<br>(90)<br>**   | .149<br>(263)<br>*    | .018<br>(263)         | .201<br>(263)<br>** | .244<br>(260)<br>**   | .104<br>(263)        | -.016<br>(232)     | .018<br>(263)         | -.389<br>(263)<br>** | -.198<br>(263)<br>** |
| SENTIMENT FOR THIS PARTICULAR IPO |                       |                       |                       |                       |                       |                      |                       |                       |                     |                       |                      |                    |                       |                      |                      |
| Over-<br>Scription                | .106<br>(89)          | -.023<br>(89)         | .131<br>(89)          | .062<br>(89)          | .239<br>(90)<br>**    | <b>1.000</b><br>(93) | .568<br>(93)<br>**    | .163<br>(93)          | -.059<br>(93)       | -.083<br>(92)         | -.013<br>(93)        | .327<br>(82)<br>** | .163<br>(93)          | (a)                  | (a)                  |
| COMPANY RISK                      |                       |                       |                       |                       |                       |                      |                       |                       |                     |                       |                      |                    |                       |                      |                      |
| Vola-<br>Tility                   | .135<br>(280)<br>*    | .056<br>(280)         | .207<br>(264)<br>**   | .007<br>(264)         | .149<br>(263)<br>*    | .568<br>(93)<br>**   | <b>1.000</b><br>(300) | .142<br>(300)<br>*    | -.016<br>(300)      | .004<br>(292)         | -.023<br>(300)       | .101<br>(263)      | .142<br>(300)<br>*    | -.073<br>(300)       | -.192<br>(300)<br>** |
| ICT                               | -.042<br>(280)        | -.038<br>(280)        | .211<br>(264)<br>**   | .030<br>(264)         | .018<br>(263)         | .163<br>(93)         | .142<br>(300)<br>*    | <b>1.000</b><br>(263) | .178<br>(300)<br>** | .173<br>(292)<br>**   | .046<br>(300)        | .058<br>(263)      | <b>1.000</b><br>(263) | -.132<br>(300)<br>*  | -.057<br>(300)       |

|                          | Return<br>Spec | Return<br>Gen       | LN<br>New<br>IPOs    | New<br>IPOs<br>%    | UP<br>Last<br>IPOs   | Over-<br>Scription | Vola-<br>Tility      | ICT                 | LN<br>Market<br>Cap   | LN<br>Funds<br>Raised | LN<br>Issue<br>Price  | Venture<br>Capital    | ICT                 | Nouveau<br>Marché     | Easdaq                |
|--------------------------|----------------|---------------------|----------------------|---------------------|----------------------|--------------------|----------------------|---------------------|-----------------------|-----------------------|-----------------------|-----------------------|---------------------|-----------------------|-----------------------|
| LN Market<br>Cap         | -.091<br>(280) | -.068<br>(280)      | .261<br>(264)<br>**  | -.007<br>(264)      | .201<br>(263)<br>**  | -.059<br>(93)      | -.016<br>(300)       | .178<br>(300)<br>** | <b>1.000</b><br>(300) | .841<br>(292)<br>**   | .232<br>(300)<br>**   | .042<br>(263)         | .178<br>(300)<br>** | -.461<br>(300)<br>**  | .128<br>(300)<br>*    |
| LN Funds<br>Raised       | -.074<br>(272) | -.061<br>(272)      | .279<br>(261)<br>**  | .045<br>(261)       | .244<br>(260)<br>**  | -.083<br>(92)      | .004<br>(292)        | .173<br>(292)<br>** | .841<br>(292)<br>**   | <b>1.000</b><br>(292) | .249<br>(292)<br>**   | .048<br>(262)         | .173<br>(292)<br>** | -.563<br>(292)<br>**  | .183<br>(292)<br>**   |
| LN Issue<br>Price        | .001<br>(280)  | .100<br>(280)       | .175<br>(264)<br>**  | .015<br>(264)       | .104<br>(263)        | -.013<br>(93)      | -.023<br>(300)       | .046<br>(300)       | .232<br>(300)<br>**   | .249<br>(292)<br>**   | <b>1.000</b><br>(300) | -.048<br>(263)        | .046<br>(300)       | .055<br>(300)         | -.106<br>(300)        |
| CERTIFICATION OF THE IPO |                |                     |                      |                     |                      |                    |                      |                     |                       |                       |                       |                       |                     |                       |                       |
| Venture<br>capital       | .071<br>(243)  | .009<br>(243)       | -.051<br>(232)       | .004<br>(232)       | -.016<br>(232)       | .327<br>(82)<br>** | .101<br>(263)        | .058<br>(263)       | .042<br>(263)         | .048<br>(262)         | -.048<br>(263)        | <b>1.000</b><br>(144) | .058<br>(263)       | .001<br>(263)         | .045<br>(263)         |
| CONTROL VARIABLES        |                |                     |                      |                     |                      |                    |                      |                     |                       |                       |                       |                       |                     |                       |                       |
| Nouveau<br>Marché        | -.028<br>(280) | .155<br>(280)<br>** | -.377<br>(264)<br>** | -.127<br>(264)<br>* | -.389<br>(263)<br>** | (a)                | -.073<br>(300)       | -.132<br>(300)<br>* | -.461<br>(300)<br>**  | -.563<br>(292)<br>**  | 0.055<br>(300)        | .001<br>(263)         | -.132<br>(300)<br>* | <b>1.000</b><br>(300) | -.244<br>(300)<br>**  |
| Easdaq                   | .116<br>(280)  | .031<br>(280)       | -.305<br>(264)<br>** | .122<br>(264)<br>*  | -.198<br>(263)<br>** | (a)                | -.192<br>(300)<br>** | -.057<br>(300)      | .128<br>(300)<br>*    | .183<br>(292)<br>**   | -.106<br>(300)        | .045<br>(263)         | -.057<br>(300)      | -.244<br>(300)<br>**  | <b>1.000</b><br>(300) |

(a):Correlation can not be computed because at least one of the variables is constant.

\* : Correlation is significant at the 0.05 level (2-tailed).

\*\* : Correlation is significant at the 0.01 level (2-tailed).

**Appendix Table E: Results of the multiple regression without control variables (overall sample)**

|                              | Coefficient | t-value  |  | Coefficient | t-value  |
|------------------------------|-------------|----------|--|-------------|----------|
|                              |             |          |  |             |          |
| ( Constant)                  | 8.315       | 0.479    |  | 1.617       | 0.083    |
|                              |             |          |  |             |          |
| MARKET SENTIMENT AT IPO TIME |             |          |  |             |          |
| Return Spec                  | 0.269       | 0.519    |  | 0.280       | 0.540    |
| Return Gen                   | 0.337       | 0.514    |  | 0.340       | 0.530    |
| LN New IPOs                  | -9.011      | -1.586   |  | -8.686      | -1.572   |
| New IPOs %                   | -0.096      | -0.343   |  | -0.076      | -0.268   |
| IR Last IPOs                 | 0.595       | ** 5.196 |  | 0.599       | ** 5.247 |
|                              |             |          |  |             |          |
| COMPANY RISK                 |             |          |  |             |          |
| Volatility                   | 4.986       | ** 3.795 |  | 4.989       | ** 3.790 |
| ICT                          | 23.167      | * 2.594  |  | 22.781      | * 2.565  |
| LN Funds raised              | 4.310       | 1.270    |  |             |          |
| LN Market cap                |             |          |  | 4.365       | 1.255    |
| LN Issue price               | -8.509      | -1.733   |  | -8.512      | -1.758   |
|                              |             |          |  |             |          |
| CERTIFICATION OF THE IPO     |             |          |  |             |          |
| Venture capital              | 1.148       | 0.148    |  | 1.651       | 0.216    |
|                              |             |          |  |             |          |
| Number of valid cases        | 226         |          |  | 227         |          |
| Adjusted R square            | 29.3 %      |          |  | 29.3 %      |          |
|                              |             |          |  |             |          |

\* : the coefficient is significant at the 0.02 level (two-tailed).

\*\* : the coefficient is significant at the 0.01 level (two-tailed).

---

## FOOTNOTES

<sup>1</sup> We will not give an overview of admission criteria because they are regularly changed.

<sup>2</sup> The Dutch, Belgian and Italian EuroNM segments are not presented separately in figure 1 b because of their minor importance: on October 1 1999, they had respectively 14, 12 and 1 listing(s). Because of this single listing no further attention is given to the Italian segment in the remainder of this paper.

<sup>3</sup> For an overview, we refer to Kunz and Aggarwal (1994), Van Hulle, Casselman and Imam (1993) and Ritter (1998).

<sup>4</sup> Bergström, Fredrikson, Högfeldt, Lind (1995) and Ritter (1998) present an exhaustive overview of theories explaining why underpricing occurs.

<sup>5</sup> We use price indices because for EuroNM and Easdaq return indices are not available on Datastream. However, both are almost equal to each other since stocks on Easdaq or EuroNM very seldom pay dividends.

<sup>6</sup> Cfr. also 'behavioral finance' theory as in Kahneman, Tversky (1982) and Lee, Shleifer and Vishny (1991).

<sup>7</sup> Variables for which we expect a non-linear but monotonously decreasing relation with the dependent variable are transformed into natural logarithm variables.

<sup>8</sup> Ibbotson, Ritter and Sindelar (1988) find that IPOs with an issue price of less than 3 \$ (penny stocks) tend to be more speculative offerings and observe high levels of initial returns for this category ( 42.8 %). IPOs with an offering price above 3 \$ gave initial returns of only 8.6 %.

<sup>9</sup> Correlations between the independent variables are given in appendix table D.

<sup>10</sup> Non-parametric tests yield similar conclusions about the significance of the differences.

<sup>11</sup> As there is (on average) little difference between measured initial returns on different trading days, the impact of the exact choice of a specific trading day will be minimal.

<sup>12</sup> Appendix table E reports the regression analysis without control variables, yielding identical conclusions.

<sup>13</sup> It could be argued that correlation between specific and general return on the stock market ( Return Spec and Return Gen) is relatively high too(0.475). We controlled for possible multicollinearity problems but these were not present. This is also the case for oversubscription rate and volatility(0.568), for the Nouveau Marché subsample.

<sup>14</sup> These adjusted R<sup>2</sup> are high compared to those found in other studies: e.g. Balver, McDonald and Miller (1988) and Beatty (1989) respectively report adjusted R<sup>2</sup> of 9 % en 11.6 %.



## WORKING PAPER SERIES

1

- 94/01 **L. GOUBERT, E. OMEY**, The long-term labour demand and the role of productivity in manufacturing in eight OECD-countries, June 1994, 24 p.
- 94/02 **F. HEYLEN**, Social, economic and political institutions and taxes on labour, September 1994, 38 p. (published in *Weltwirtschaftliches Archiv*, 1995).
- 94/03 **P. JOOS, H. OOGHE**, Comparison between market determined and accounting determined measures of risk : an empirical assessment for the non-financial firms listed on the Brussels stock exchange, October 1994, 35 p.
- 94/04 **R. VANDER VENNET**, Market structure and operational efficiency a determinants of EC bank profitability, September 1994, 25 p. (published in *Journal of International Financial Markets, Institutions and Money*, 1994).
- 94/05 **S. MANIGART, B. CLARYSSE, K. DEBACKERE**, Entry despite the network : exploring the relationship between network structure and entry patterns in emergent organizational populations, December 1994, 39 p.
- 95/06 **G. VAN HUFFEL, P. JOOS, H. OOGHE**, Semi-annual earnings announcements and market reaction : some recent findings for a small capital market, February 1995, 23 p. (published in *European Accounting Review*, 1996).
- 95/07 **H. SAPIENZA, S. MANIGART, W. VERMEIR**, A comparison of venture capitalist governance and value-added in the U.S. and Western Europe, February 1995, 31 p. (published in *Journal of Business Venturing*, 1996).
- 95/08 **F. HEYLEN, L. GOUBERT, E. OMEY**, Unemployment in Europe : a problem of relative or aggregate demand shocks ? , March 1995, 16 p. (published in *International Labour Review*, 1996).
- 95/09 **R. VANDER VENNET**, The effect of mergers and acquisitions on the efficiency and profitability of EC credit institutions, April 1995, 35 p. (published in *Journal of Banking and Finance*, 1996).
- 95/10 **P. VAN KENHOVE**, A comparison between the "pick any" method of scaling and the semantic differential, April 1995, 14 p.
- 95/11 **K. SCHOORS**, Bad loans in transition economies, May 1995, 42 p.
- 95/12 **P. JOOS, H. OOGHE**, Problemen bij het opstellen van classificatiemodellen : een toepassing op commerciële kredietscoring bij financiële instellingen, Juni 1995, 39 p. (gepubliceerd in *Tijdschrift voor Economie en Management*, 1998).
- 95/13 **I. DE BEELDE**, The evolution of industrial accounting thought in Belgium in the first half of the 20th century. A textbook approach, July 1995, 29 p. (published as 'The development of a Belgian accounting code during the first half of the 20th century', in: Association Française de Comptabilité, *Cahiers de Recherches*, 1996).
- 95/14 **D. SCHOCKAERT**, Japanse laagconjunctuur en vastgoedmarktontwikkelingen, Oktober 1995, 24 p. (gepubliceerd in *Maandschrift Economie*, 1996).
- 95/15 **P. GEMMEL, R. VAN DIERDONCK**, The design of a MRP-based hospital service requirements planning system : the impact of different sources of uncertainty, October 1995, October 1995, 23 p.
- 95/16 **J. MATON**, The Cape of Good Hope. Employment and income distribution in South Africa, September 1995, October 1995, 59 p.
- 96/17 **D. WAEYTENS**, Activity-based information in budgeting : the impact on information asymmetry, budget slack creation and related dysfunctional behaviors - a lab experiment, February 1996, 40 p.
- 96/18 **R. SLAGMULDER**, Using management control systems to achieve alignment between strategic investment decisions and strategy, February 1996, 36 p. (published in *Management Accounting Research*, 1997).
- 96/19 **N. VALCKX, W. DE VIJLDER**, Monetary policy and asset prices : a comparison of the Fed's announcement policies 1987-1995, March 1996, 19 p. (published in *Bank- en Financiewezen*, 1996).
- 96/20 **S. VANDORPE, J. DENYS, E. OMEY**, De arbeidsmarktintegratie van afgestudeerden uit TSO en BSO : een longitudinale studie, Mei 1996, 21 p. (gepubliceerd in *Economisch en Sociaal Tijdschrift*, 1997)



## WORKING PAPER SERIES

2

- 96/21 **N. VALCKX**, Business cycle properties of financial indicators in Germany, October 1996, 29 p.
- 96/22 **T. TERMOTE**, De arbeidsmarktparticipatie van de vrouw, ontwikkeling van de dienstensector en werkgelegenheid, November 1996, 35 p.
- 97/23 **M. VERHUE**, Demand for unemployment insurance : a survey-based analysis, January 1997, 25 p.
- 97/24 **R. VAN HOVE, R. FRAMBACH, P. VAN KENHOVE**, The impact of physical attractiveness in advertising on consumer attitude : the role of product involvement, January 1997, 25 p.
- 97/25 **I. DE BEELDE**, Creating a profession 'out of nothing'. The case of the Belgian auditing profession, February 1997, 27 p. (forthcoming in *Accounting, Organizations and Society*, 2002)
- 97/26 **L. GOUBERT**, De flexibiliteit van de Belgische relatieve lonen, Maart 1997, 27 p.
- 97/27 **S. MANIGART, K. DE WAELE, M. WRIGHT, K. ROBBIE**, Venture capitalist's appraisal of investment projects : an empirical study in four European countries, March 1997, 18 p. (published in *Entrepreneurship Theory & Practice*, 1997).
- 97/28 **P. DE PELSMACKER, J. VAN DEN BERGH**, Advertising content and irritation. A Study of 226 TV commercials, April 1997, 27 p. (published in *Journal of International Consumer Marketing*, 1998).
- 97/29 **R. VANDER VENNET**, Determinants of EU bank takeovers : a logit analysis, April 1997, 23 p. (published as 'Causes and consequences of EU bank takeovers', in S. Eijffinger, K. Koedijk, M. Pagano and R. Portes (eds.), *The Changing European Financial Landscape*, CEPR, 1999).
- 97/30 **R. COOPER, R. SLAGMULDER**, Factors influencing the target costing process : lessons from Japanese practice, April 1997, 29 p. (published in R. Cooper and R. Slagmulder, *Target Costing and Value Engineering*, Productivity Press, Portland, 1997).
- 97/31 **E. SCHOKKAERT, M. VERHUE, E. OMEY**, Individual preferences concerning unemployment compensation : insurance and solidarity, June 1997, 24 p.
- 97/32 **F. HEYLEN**, A contribution to the empirical analysis of the effects of fiscal consolidation : explanation of failure in Europe in the 1990s, June 1997, 30 p. (revised version, co-authored by G. Everaert, published in *Public Choice*, 2000).
- 97/33 **R. FRAMBACH, E. NIJSSEN**, Industrial pricing practices and determinants, June 1997, 33 p. (published in D. Thorne Leclair and M. Hartline (eds.), *Marketing theory and applications*, vol. 8, Proceedings AMA Winter Conference 1997).
- 97/34 **I. DE BEELDE**, An exploratory investigation of industry specialization of large audit firms, July 1997, 19 p. (published in *International Journal of Accounting*, 1997).
- 97/35 **G. EVERAERT**, Negative economic growth externalities from crumbling public investment in Europe : evidence based on a cross-section analysis for the OECD-countries, July 1997, 34 p.
- 97/36 **M. VERHUE, E. SCHOKKAERT, E. OMEY**, De kloof tussen laag- en hoggeschoolden en de politieke houdbaarheid van de Belgische werkloosheidsverzekering : een empirische analyse, augustus 1997, 30 p. (gepubliceerd in *Economisch en Sociaal Tijdschrift*, 1999).
- 97/37 **J. CROMBEZ, R. VANDER VENNET**, The performance of conditional betas on the Brussels Stock exchange, September 1997, 21 p. (published in *Tijdschrift voor Economie en Management*, 2000).
- 97/38 **M. DEBRUYNE, R. FRAMBACH**, Effective pricing of new industrial products, September 1997, 23 p. (published in D. Grewal and C. Pechmann (eds.), *Marketing theory and applications*, vol. 9, Proceedings AMA Winter Conference 1998).
- 97/39 **J. ALBRECHT**, Environmental policy and the inward investment position of US 'dirty' industries, October 1997, 20 p. (published in *Intereconomics*, 1998).



## WORKING PAPER SERIES

3

- 97/40 **A. DEHAENE, H. OOGHE**, De disciplinering van het management : een literatuuroverzicht, oktober 1997, 28 p. (published in *Economisch en Sociaal Tijdschrift*, 2000).
- 97/41 **G. PEERSMAN**, The monetary transmission mechanism : empirical evidence for EU-countries, November 1997, 25 p.
- 97/42 **S. MANIGART, K. DE WAELE**, Choice dividends and contemporaneous earnings announcements in Belgium, November 1997, 25 p. (published in *Cahiers Economiques de Bruxelles*, 1999).
- 97/43 **H. OOGHE**, Financial Management Practices in China, December 1997, 24 p. (published in *European Business Review*, 1998).
- 98/44 **B. CLARYSSE, R. VAN DIERDONCK**, Inside the black box of innovation : strategic differences between SMEs, January 1998, 30 p.
- 98/45 **B. CLARYSSE, K. DEBACKERE, P. TEMIN**, Innovative productivity of US biopharmaceutical start-ups : insights from industrial organization and strategic management, January 1998, 27 p. (published in *International Journal of Biotechnology*, 2000).
- 98/46 **R. VANDER VENNET**, Convergence and the growth pattern of OECD bank markets, February 1998, 21 p. (published as 'The law of proportionate effect of OECD bank sectors' in *Applied Economics*, 2001).
- 98/47 **B. CLARYSSE, U. MULBUR**, Regional cohesion in Europe ? The role of EU RTD policy reconsidered, April 1998, 28 p. (published in *Research Policy*, 2001).
- 98/48 **A. DEHAENE, H. OOGHE**, Board composition, corporate performance and dividend policy, April 1998, 22 p. (published as 'Corporate performance and board structure in Belgian companies' in *Long Range Planning*, 2001).
- 98/49 **P. JOOS, K. VANHOOF, H. OOGHE, N. SIERENS**, Credit classification : a comparison of logit models and decision trees, May 1998, 15 p.
- 98/50 **J. ALBRECHT**, Environmental regulation, comparative advantage and the Porter hypothesis, May 1998, 35 p. (published in *International Journal of Development Planning Literature*, 1999).
- 98/51 **S. VANDORPE, I. NICAISE, E. OMEY**, 'Work Sharing Insurance' : the need for government support, June 1998, 20 p.
- 98/52 **G. D. BRUTON, H. J. SAPIENZA, V. FRIED, S. MANIGART**, U.S., European and Asian venture capitalists' governance : are theories employed in the examination of U.S. entrepreneurship universally applicable?, June 1998, 31 p.
- 98/53 **S. MANIGART, K. DE WAELE, M. WRIGHT, K. ROBBIE, P. DESBRIERES, H. SAPIENZA, A. BEEKMAN**, Determinants of required return in venture capital investments : a five country study, June 1998, 36 p. (forthcoming in *Journal of Business Venturing*, 2002).
- 98/54 **J. BOUCKAERT, H. DEGRYSE**, Price competition between an expert and a non-expert, June 1998, 29p. (published in *International Journal of Industrial Organisation*, 2000).
- 98/55 **N. SCHILLEWAERT, F. LANGERAK, T. DUHAMEL**, Non probability sampling for WWW surveys : a comparison of methods, June 1998, 12 p. (published in *Journal of the Market Research Society*, 1999).
- 98/56 **F. HEYLEN**, Monetaire Unie en arbeidsmarkt : reflecties over loonvorming en macro-economisch beleid, juni 1998, 15 p. (gepubliceerd in M. Eyskens e.a., *De euro en de toekomst van het Europese maatschappijmodel*, Intersentia, 1999).
- 98/57 **G. EVERAERT, F. HEYLEN**, Public capital and productivity growth in Belgium, July 1998, 20 p. (published in *Economic Modelling*, 2001).
- 98/58 **G. PEERSMAN, F. SMETS**, The Taylor rule : a useful monetary policy guide for the ECB ?, September 1998, 28 p. (published in *International Finance*, 1999).



## WORKING PAPER SERIES

4

- 98/59 **J. ALBRECHT**, Environmental consumer subsidies and potential reductions of CO<sub>2</sub> emissions, October 1998, 28 p.
- 98/60 **K. SCHOORS**, A payment system failure and its consequences for interrepublican trade in the former Soviet Union, December 1998, 31 p. (published in *Economics of Transition*, 2001).
- 98/61 **M. DE LOOF**, Intragroup relations and the determinants of corporate liquid reserves : Belgian evidence, December 1998, 29 p. (published in *European Financial Management*, 2000).
- 98/62 **P. VAN KENHOVE, W. VAN WATERSCHOOT, K. DE WULF**, The impact of task definition on store choice and store-attribute saliences, December 1998, 16 p. (published in *Journal of Retailing*, 1999).
- 99/63 **P. GEMMEL, F. BOURGONJON**, Divergent perceptions of TQM implementation in hospitals, January 1999, 25 p. (forthcoming in *Journal of Management in Medicine*, 2000)
- 99/64 **K. SCHOORS**, The credit squeeze during Russia's early transition. A bank-based view, January 1999, 26 p.
- 99/65 **G. EVERAERT**, Shifts in balanced growth and public capital - an empirical analysis for Belgium, March 1999, 24 p.
- 99/66 **M. DE LOOF, M. JEGERS**, Trade Credit, Corporate Groups, and the Financing of Belgian Firms, March 1999, 31 p. (published in *Journal of Business Finance and Accounting*, 1999).
- 99/67 **M. DE LOOF, I. VERSCHUEREN**, Are leases and debt substitutes ? Evidence from Belgian firms, March 1999, 11 p. (published in *Financial Management*, 1999).
- 99/68 **H. OOGHE, A. DEHAENE**, De sociale balans in België : voorstel van analysemethode en toepassing op het boekjaar 1996, April 1999, 28 p. (gepubliceerd in *Accountancy en Bedrijfskunde Kwartaalschrift*, 1999).
- 99/69 **J. BOUCKAERT**, Monopolistic competition with a mail order business, May 1999, 9 p. (published in *Economics Letters*, 2000).
- 99/70 **R. MOENAERT, F. CAELDRIES, A. LIEVENS, E. WOUTERS**, Communication flows in international product innovation teams, June 1999, p. (published in *Journal of Product Innovation Management*, 2000).
- 99/71 **G. EVERAERT**, Infrequent large shocks to unemployment. New evidence on alternative persistence perspectives, July 1999, 28 p. (published in *LABOUR: Review of Labour Economics and Industrial Relations*, 2001).
- 99/72 **L. POZZI**, Tax discounting and direct crowding-out in Belgium : implications for fiscal policy, August 1999, 21 p.
- 99/73 **I. VERSCHUEREN, M. DE LOOF**, Intragroup debt, intragroup guaranties and the capital structure of Belgian firms, August 1999, 26 p.
- 99/74 **A. BOSMANS, P. VAN KENHOVE, P. VLERICK, H. HENDRICKX**, Automatic Activation of the Self in a Persuasion Context, September 1999, 19 p. (published in *Advances in Consumer Research*, 2000).
- 99/75 **I. DE BEELDE, S. COOREMAN, H. LEYDENS**, Expectations of users of financial information with regard to the tasks carried out by auditors, October 1999, 17 p.
- 99/76 **J. CHRISTIAENS**, Converging new public management reforms and diverging accounting practices in Belgian local governments, October 1999, 26 p. (published in *Financial Accountability & Management*, 2001)
- 99/77 **V. WEETS**, Who will be the new auditor ?, October 1999, 22 p.
- 99/78 **M. DEBRUYNE, R. MOENAERT, A. GRIFFIN, S. HART, E.J. HULTINK, H. ROBBEN**, The impact of new product launch strategies on competitive reaction in industrial markets, November 1999, 25 p.
- 99/79 **H. OOGHE, H. CLAUS, N. SIERENS, J. CAMERLYNCK**, International comparison of failure prediction models from different countries: an empirical analysis, December 1999, 33 p.





## WORKING PAPER SERIES

5

- 00/80 **K. DE WULF, G. ODEKERKEN-SCHRÖDER**, The influence of seller relationship orientation and buyer relationship proneness on trust, commitment, and behavioral loyalty in a consumer environment, January 2000, 27 p. (published as 'Investments in consumer relationships: a cross-country and cross-industry exploration', *Journal of Marketing*, 2001)
- 00/81 **R. VANDER VENNET**, Cost and profit efficiency of financial conglomerates and universal banks in Europe., February 2000, 33 p. (forthcoming in *Journal of Money, Credit, and Banking*, 2002)
- 00/82 **J. BOUCKAERT**, Bargaining in markets with simultaneous and sequential suppliers, April 2000, 23 p. (forthcoming in *Journal of Economic Behavior and Organization*, 2002)
- 00/83 **N. HOUTHOOFD, A. HEENE**, A systems view on what matters to excel, May 2000, 22 p.
- 00/84 **D. VAN DE GAER, E. SCHOKKAERT, M. MARTINEZ**, Three meanings of intergenerational mobility, May 2000, 20 p. (published in *Economica*, 2001)
- 00/85 **G. DHAENE, E. SCHOKKAERT, C. VAN DE VOORDE**, Best affine unbiased response decomposition, May 2000, 9 p.
- 00/86 **D. BUYENS, A. DE VOS**, The added value of the HR-department : empirical study and development of an integrated framework, June 2000, 37 p. (published as 'Personnel and human resource managers: Power, prestige and potential - Perceptions of the value of the HR function', in *Human Resource Management Journal*, 2001).
- 00/87 **K. CAMPO, E. GIJSBRECHTS, P. NISOL**, The impact of stock-outs on whether, how much and what to buy, June 2000, 50 p.
- 00/88 **K. CAMPO, E. GIJSBRECHTS, P. NISOL**, Towards understanding consumer response to stock-outs, June 2000, 40 p. (published in *Journal of Retailing*, 2000)
- 00/89 **K. DE WULF, G. ODEKERKEN-SCHRÖDER, P. SCHUMACHER**, Why it takes two to build succesful buyer-seller relationships July 2000, 31 p. (published as 'Strengthening Retailer-Consumer Relationships: The Dual Impact of Relationship Marketing Tactics and Consumer Personality', in *Journal of Business Research*, 2002)
- 00/90 **J. CROMBEZ, R. VANDER VENNET**, Exact factor pricing in a European framework, September 2000, 38 p.
- 00/91 **J. CAMERLYNCK, H. OOGHE**, Pre-acquisition profile of privately held companies involved in takeovers : an empirical study, October 2000, 34 p.
- 00/92 **K. DENECKER, S. VAN ASSCHE, J. CROMBEZ, R. VANDER VENNET, I. LEMAHIEU**, Value-at-risk prediction using context modeling, November 2000, 24 p. (published in *European Physical Journal B*, 2001)
- 00/93 **P. VAN KENHOVE, I. VERMEIR, S. VERNIERS**, An empirical investigation of the relationships between ethical beliefs, ethical ideology, political preference and need for closure of Dutch-speaking consumers in Belgium, November 2000, 37 p. (published in *Journal of Business Ethics*, 2001)
- 00/94 **P. VAN KENHOVE, K. WIJNEN, K. DE WULF**, The influence of topic involvement on mail survey response behavior, November 2000, 40 p. (forthcoming in *Psychology & Marketing*, 2002).
- 00/95 **A. BOSMANS, P. VAN KENHOVE, P. VLERICK, H. HENDRICKX**, The effect of mood on self-referencing in a persuasion context, November 2000, 26p. (published in *Advances in Consumer Research*, vol.28, 2001, p.115-121)
- 00/96 **P. EVERAERT, G. BOËR, W. BRUGGEMAN**, The Impact of Target Costing on Cost, Quality and Development Time of New Products: Conflicting Evidence from Lab Experiments, December 2000, 47 p.
- 00/97 **G. EVERAERT**, Balanced growth and public capital: An empirical analysis with I(2)-trends in capital stock data, December 2000, 29 p. (forthcoming in *Economic Modelling*, 2002).
- 00/98 **G. EVERAERT, F. HEYLEN**, Public capital and labour market performance in Belgium, December 2000, 45 p.
- 00/99 **G. DHAENE, O. SCAILLET**, Reversed Score and Likelihood Ratio Tests, December 2000, 16 p.



## WORKING PAPER SERIES

6

- 01/100 **A. DE VOS, D. BUYENS**, Managing the psychological contract of graduate recruits: a challenge for human resource management, January 2001, 35 p.
- 01/101 **J. CHRISTIAENS**, Financial Accounting Reform in Flemish Universities: An Empirical Study of the implementation, February 2001, 22 p.
- 01/102 **S. VIAENE, B. BAESENS, D. VAN DEN POEL, G. DEDENE, J. VANTHIENEN**, Wrapped Input Selection using Multilayer Perceptrons for Repeat-Purchase Modeling in Direct Marketing, June 2001, 23 p. (published in *International Journal of Intelligent Systems in Accounting, Finance & Management*, 2001).
- 01/103 **J. ANNAERT, J. VAN DEN BROECK, R. VANDER VENNET**, Determinants of Mutual Fund Performance: A Bayesian Stochastic Frontier Approach, June 2001, 31 p.
- 01/104 **S. VIAENE, B. BAESENS, T. VAN GESTEL, J.A.K. SUYKENS, D. VAN DEN POEL, J. VANTHIENEN, B. DE MOOR, G. DEDENE**, Knowledge Discovery in a Direct Marketing Case using Least Square Support Vector Machines, June 2001, 27 p. (published in *International Journal of Intelligent Systems*, 2001).
- 01/105 **S. VIAENE, B. BAESENS, D. VAN DEN POEL, J. VANTHIENEN, G. DEDENE**, Bayesian Neural Network Learning for Repeat Purchase Modelling in Direct Marketing, June 2001, 33 p. (published in *European Journal of Operational Research*, 2002).
- 01/106 **H.P. HUIZINGA, J.H.M. NELISSEN, R. VANDER VENNET**, Efficiency Effects of Bank Mergers and Acquisitions in Europe, June 2001, 33 p.
- 01/107 **H. OOGHE, J. CAMERLYNCK, S. BALCAEN**, The Ooghe-Joos-De Vos Failure Prediction Models: a Cross-Industry Validation, July 2001, 42 p.
- 01/108 **D. BUYENS, K. DE WITTE, G. MARTENS**, Building a Conceptual Framework on the Exploratory Job Search, July 2001, 31 p.
- 01/109 **J. BOUCKAERT**, Recente inzichten in de industriële economie op de ontwikkelingen in de telecommunicatie, augustus 2001, 26 p. (published in *Economisch en Sociaal Tijdschrift*, 2001).
- 01/110 **A. VEREECKE, R. VAN DIERDONCK**, The Strategic Role of the Plant: Testing Ferdows' Model, August 2001, 31 p. (forthcoming in *International Journal of Operations and Production Management*, 2002)
- 01/111 **S. MANIGART, C. BEUSELINCK**, Supply of Venture Capital by European Governments, August 2001, 20 p.
- 01/112 **S. MANIGART, K. BAEYENS, W. VAN HYFTE**, The survival of venture capital backed companies, September 2001, 32 p. (forthcoming in *Venture Capital*, 2002)
- 01/113 **J. CHRISTIAENS, C. VANHEE**, Innovations in Governmental Accounting Systems: the Concept of a "Mega General Ledger" in Belgian Provinces, September 2001, 20 p.
- 01/114 **M. GEUENS, P. DE PELSMACKER**, Validity and reliability of scores on the reduced Emotional Intensity Scale, September 2001, 25 p. (published in *Educational and Psychological Measurement*, 2001)
- 01/115 **B. CLARYSSE, N. MORAY**, A process study of entrepreneurial team formation: the case of a research based spin off, October 2001, 29 p.
- 01/116 **F. HEYLEN, L. DOBBELAERE, A. SCHOLLAERT**, Inflation, human capital and long-run growth. An empirical analysis, October 2001, 17 p.
- 01/117 **S. DOBBELAERE**, Insider power and wage determination in Bulgaria. An econometric investigation, October 2001, 30 p.
- 01/118 **L. POZZI**, The coefficient of relative risk aversion: a Monte Carlo study investigating small sample estimator problems, October 2001, 21 p.



## WORKING PAPER SERIES

7

- 01/119 **N. GOBBIN, B. VAN AARLE**, Fiscal Adjustments and Their Effects during the Transition to the EMU, October 2001, 28 p. (published in *Public Choice*, 2001).
- 01/120 **A. DE VOS, D. BUYENS, R. SCHALK**, Antecedents of the Psychological Contract: The Impact of Work Values and Exchange Orientation on Organizational Newcomers' Psychological Contracts, November 2001, 41 p.
- 01/121 **A. VAN LANDSCHOOT**, Sovereign Credit Spreads and the Composition of the Government Budget, November 2001, 29 p.
- 01/122 **K. SCHOORS**, The fate of Russia's former state banks: Chronicle of a restructuring postponed and a crisis foretold, November 2001, 54 p.
- 01/123 **J. ALBRECHT, D. FRANÇOIS, K. SCHOORS**, A Shapley Decomposition of Carbon Emissions without Residuals, December 2001, 21 p.
- 01/124 **T. DE LANGHE, H. OOGHE**, Are Acquisitions Worthwhile? An Empirical Study of the Post-Acquisition Performance of Privately Held Belgian Companies Involved in Take-overs, December 2001, 29 p.
- 01/125 **L. POZZI**, Government debt, imperfect information and fiscal policy effects on private consumption. Evidence for 2 high debt countries, December 2001, 34 p.
- 02/126 **G. RAYP, W. MEEUSEN**, Social Protection Competition in the EMU, January 2002, 20 p.
- 02/127 **S. DE MAN, P. GEMMEL, P. VLERICK, P. VAN RIJK, R. DIERCKX**, Patients' and personnel's perceptions of service quality and patient satisfaction in nuclear medicine, January 2002, 21 p.
- 02/128 **T. VERBEKE, M. DE CLERCQ**, Environmental Quality and Economic Growth, January 2002, 48 p.
- 02/129 **T. VERBEKE, M. DE CLERCQ**, Environmental policy, policy uncertainty and relocation decisions, January 2002, 33 p.
- 02/130 **W. BRUGGEMAN, V. DECOENE**, An Empirical Study of the Influence of Balanced Scorecard-Based Variable Remuneration on the Performance Motivation of Operating Managers, January 2002, 19 p.
- 02/131 **B. CLARYSSE, N. MORAY, A. HEIRMAN**, Transferring Technology by Spinning off Ventures: Towards an empirically based understanding of the spin off process, January 2002, 32 p.
- 02/132 **H. OOGHE, S. BALCAEN**, Are Failure Prediction Models Transferable From One Country to Another? An Empirical Study Using Belgian Financial Statements, February 2002, 42 p.
- 02/133 **M. VANHOUCKE, E. DEMEULEMEESTER, W. HERROELEN**, Discrete Time/Cost Trade-offs in Project scheduling with Time-Switch Constraints? February 2002, 23 p. (forthcoming in *Journal of the Operational Research Society*)
- 02/134 **C. MAYER, K. SCHOORS, Y. YAFEH**, Sources of Funds and Investment Activities of Venture Capital Funds: Evidence from Germany, Israel, Japan and the UK?, February 2002, 31 p.
- 02/135 **K. DEWETTINCK, D. BUYENS**, Employment implications of downsizing strategies and reorientation practices: an empirical exploration, February 2002, 22 p.
- 02/136 **M. DELOOF, M. DE MAESENEIRE, K. INGHELBRECHT**, The Valuation of IPOs by Investment Banks and the Stock Market: Empirical Evidence, February 2002, 24 p.
- 02/137 **P. EVERAERT, W. BRUGGEMAN**, Cost Targets and Time Pressure during New Product Development, March 2002, 21 p.
- 02/138 **D. O'NEILL, O. SWEETMAN, D. VAN DE GAER**, The impact of cognitive skills on the distribution of the black-white wage gap, March 2002, 14 p.